

SUPERNATURAL JOIN THE HUNT



1967 CHEVY® IMPALA™ | SPORT SEDAN
1/25 SCALE PLASTIC MODEL KIT

AS SEEN IN THE
LONG-RUNNING
TELEVISION SHOW

READ THIS BEFORE YOU BEGIN

Cement all parts unless otherwise indicated.

Look over this instruction sheet carefully before you begin building. Follow the assembly instructions and "test-fit" the parts without cementing. This will familiarize you with the location of the parts.

For the best results, the various sub-assemblies and components should be painted before any "chrome" parts are attached. For example: When attaching "non-chrome" body accessories, it is best to cement them in place and paint the body as a unit.

AMT® kits are molded from the finest High-Impact Styrene plastic. Use only paint and cement made for Styrene. Trim excess plastic from parts before joining. When attaching "chrome" parts, scrape plating away where parts are to be joined. Use just enough cement to join parts, and be careful not to smear cement on exposed surfaces.

Built according to the instructions on this sheet, you should have no trouble assembling your kit. Just FOLLOW THE NUMBERS, as parts are numbered in order of assembly. (C) INDICATES "CHROME" PARTS

BUILDING TIPS FOR THE ADVANCED MODELER

For the best possible finish, your kit should be painted, even if molded in color. Paint should be applied evenly, in several thin coats rather than one heavy coat. The first coat should not completely cover the surface. Each layer should be allowed to thoroughly dry before the next is applied. Also, each coat should be "wet sanded", except for the final coat, using No. 1200 wet or dry sandpaper which is slightly damp. Be careful not to remove any detail while sanding.

It is important to keep your hands clean when working with your model. Wash parts thoroughly before painting to remove any mold release agent that may have been used during manufacture, body oil from your hands, sanding residue, and dust, which is naturally attracted to plastic by static electricity. Use a mild solution of dishwashing detergent and water. A tack rag should be used to dry the parts, DO NOT use paper towels or tissues, since they will leave lint on the part.

Parting lines and glue joints should be sanded or filed prior to painting and cementing. Because paint has a tendency to draw away from sharp edges, they should be lightly filed. Use filler putty designed for plastic to fill small gaps that may occur between parts and to blend contours. This should be done only after the first, or "primer," coat of paint is applied.

When painting a two-tone body, the lightest color should be painted first. Use frosted, or "magic," tape to mask off the area you do not want painted. After the second color is dry to the touch, the tape can be removed. Use a very fine brush to touch up edges if necessary. If decals are to be added, do so before adding any gloss coat. A gloss coat will help even out the edges between the two colors as well as set the decals.

PAINT COLORS

A	Gloss Black	Q	Yellow
B	Flat Black	R	Tan
C	Semi-Gloss Black	S	Brown
D	White	T	Lt. Blue
E	Flat White	U	Med. Blue
F	Silver	V	Dark Blue
G	Chrome (Bright Silver)	W	Transparent Blue
H	Aluminum	X	Lt. Green
I	Steel	Y	Dark Green
J	Brass	Z	Gray
K	Gold	AA	Chevy® Engine Orange
L	Amber	IC	Interior Color
M	Transparent Amber	BC	Body Color
N	Red	▲	Semi-Gloss
O	Transparent Red	△	Gloss
P	Orange	▲	Metallic

EXTERIOR COLORS

1967 Chevy Impala factory paint colors include: Ermine White, Tuxedo Black, Nantucket Blue, Deepwater Blue, Granada Gold, Sierra Fawn, Maderia Maroon, Bolero Red, Capri Cream, Butternut Yellow, Marine Blue, Royal Plum, Mountain Green, Emerald Turquoise & Tahoe Turquoise

INTERIOR COLORS

Standard Colors Include: Black, Red, Bright Blue, Parchment/Black or Gold

Additional color references and details can be researched online.

 **Round 2, LLC**
4073 Meghan Beeler Ct.
South Bend, IN 46628

 **International Hobbycraft (UK) Ltd.**
10 Temple Back
Bristol BS1 6FL England

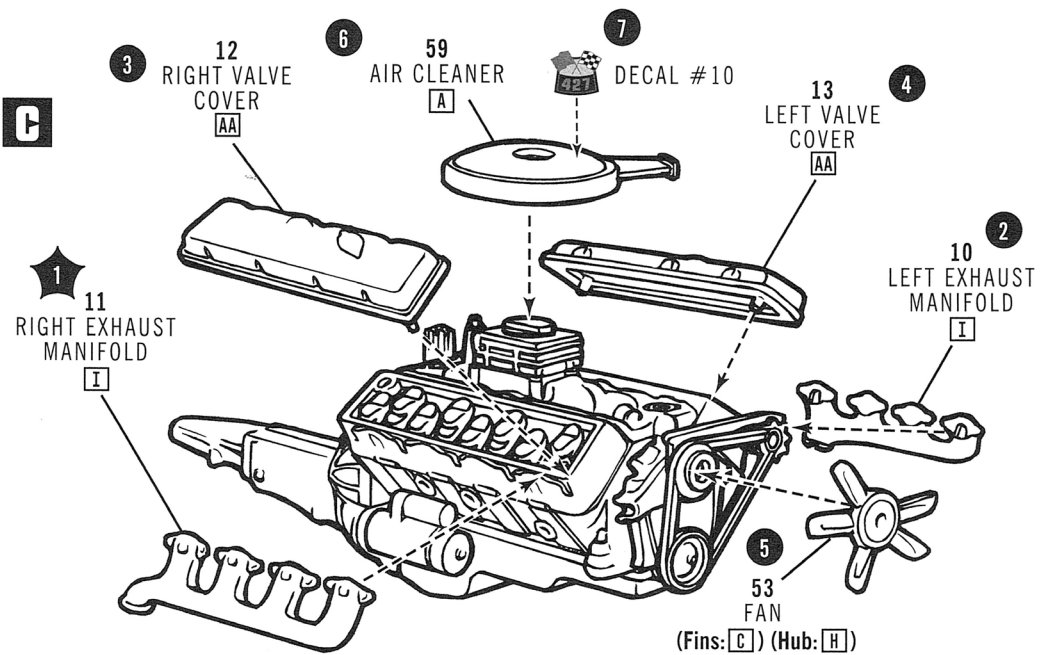
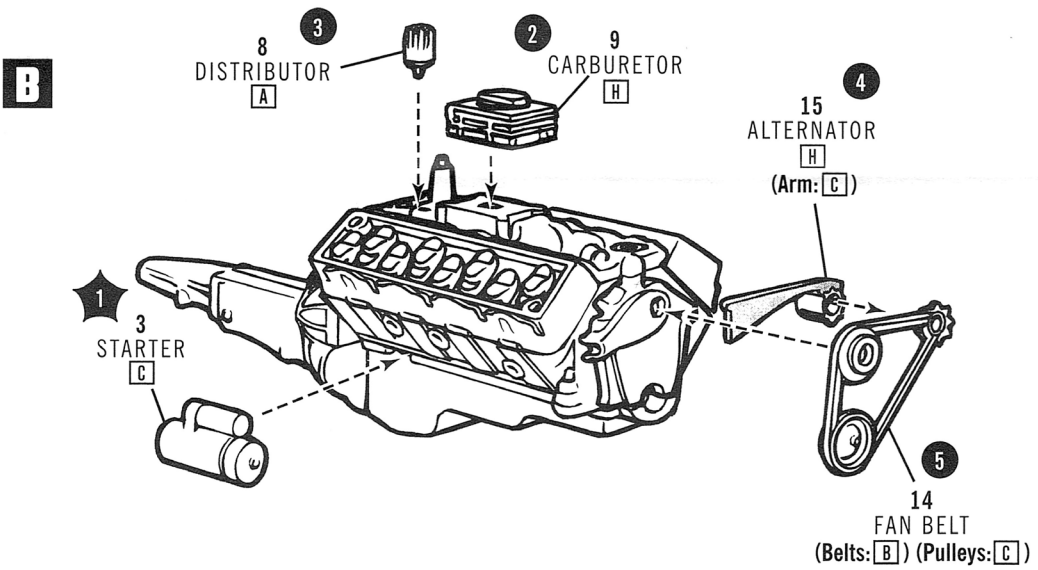
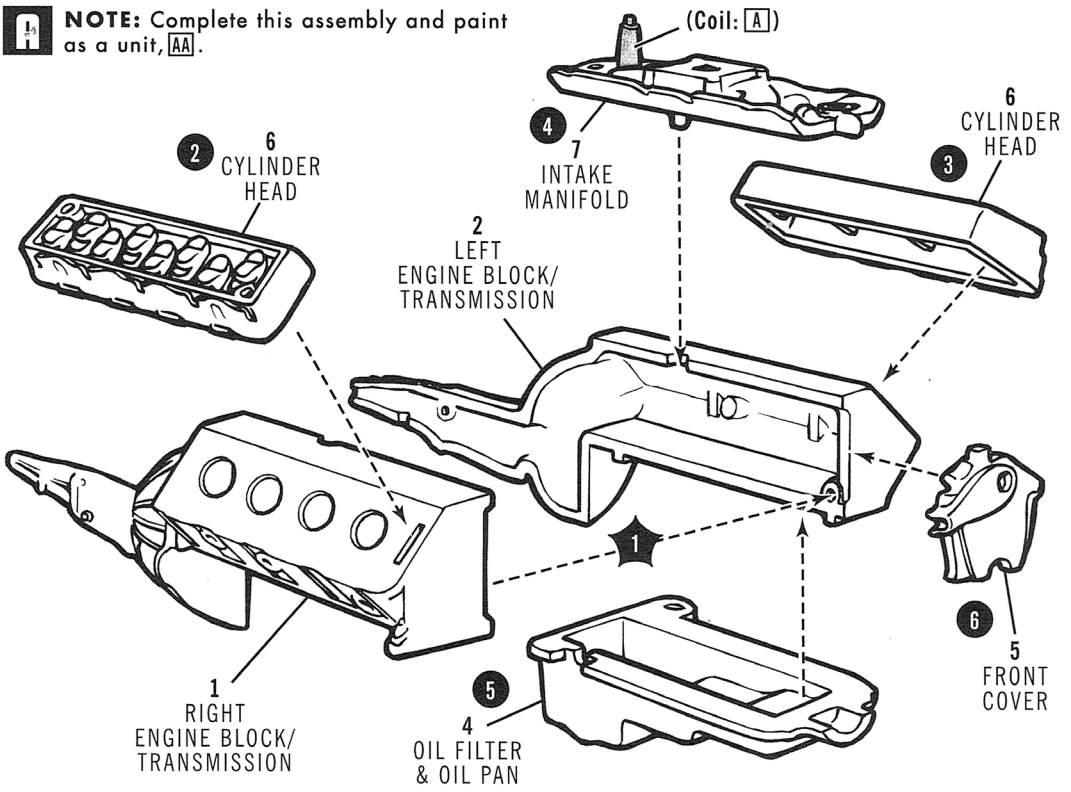
round2models.com



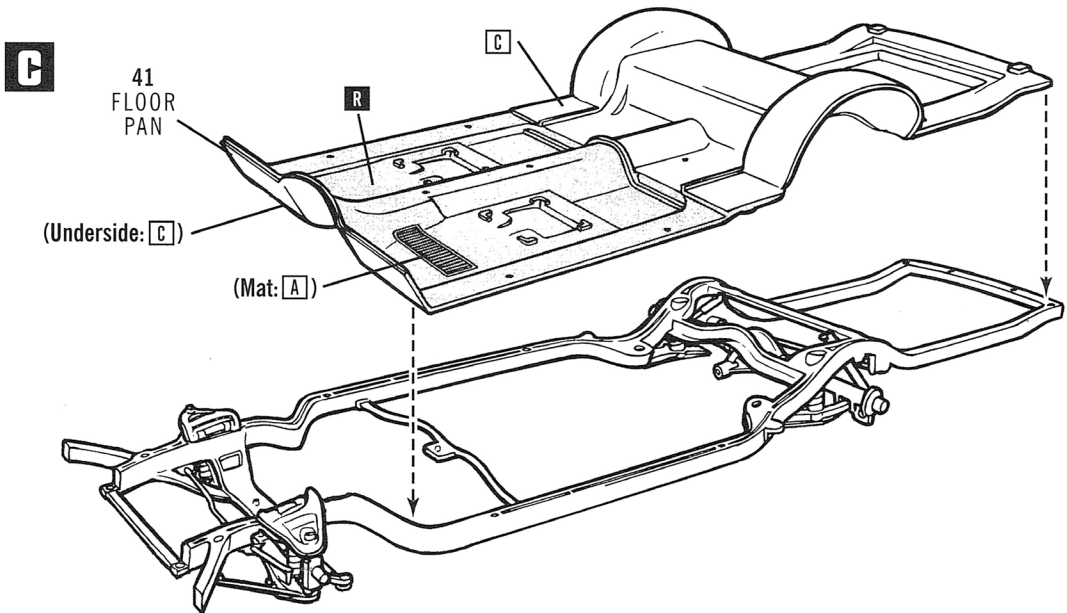
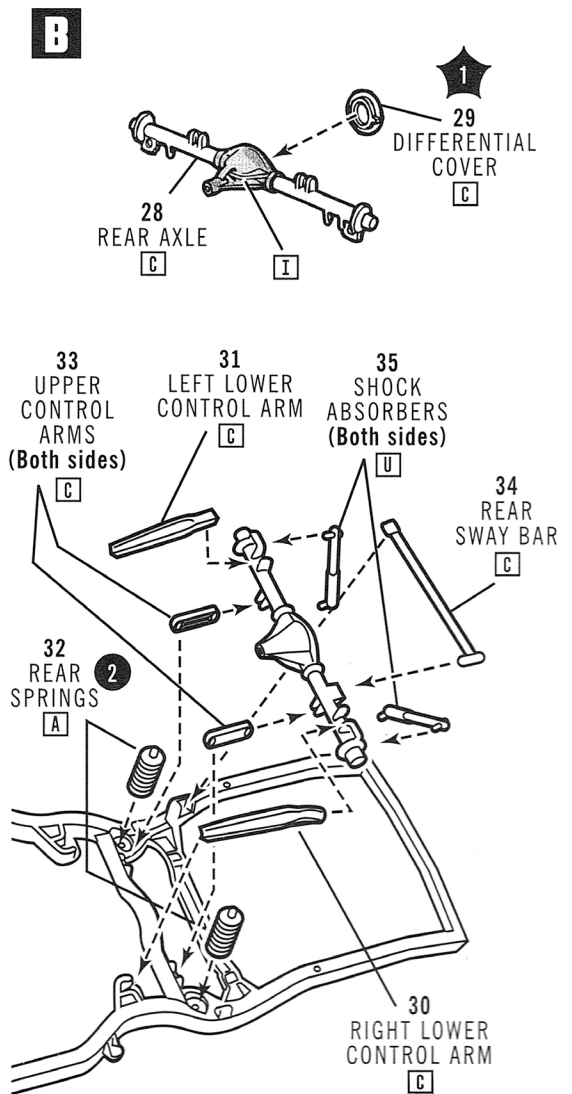
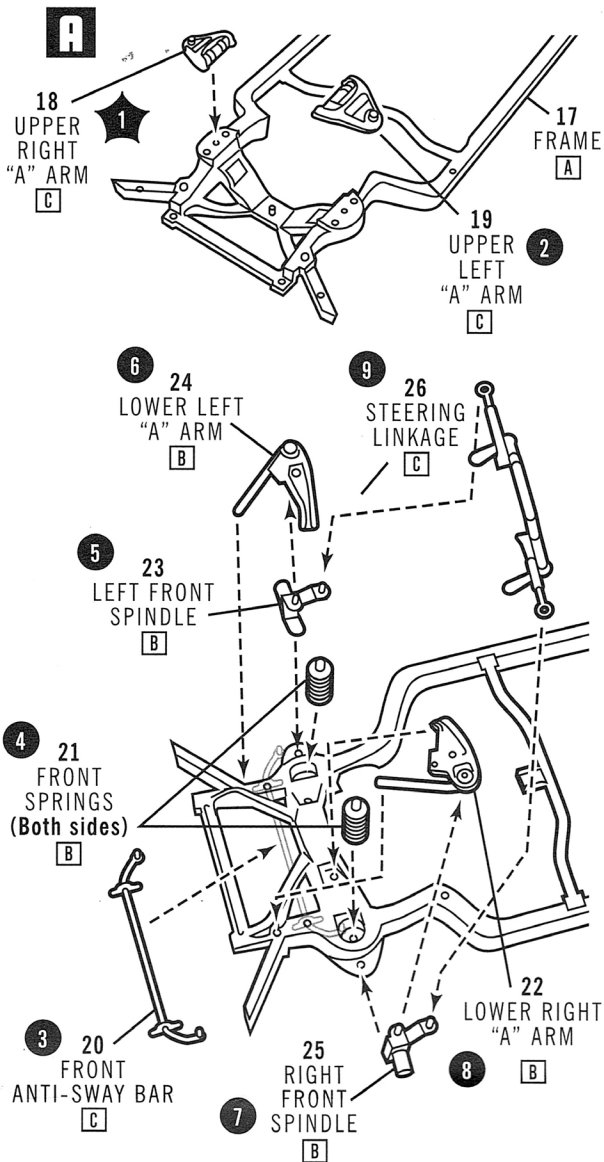
GENERAL MOTORS Trademarks used under license to Round 2, LLC. SUPERNATURAL and all related characters and elements © & ™ Warner Bros. Entertainment Inc. (s20) Christine TM & ©2020 Columbia Pictures Industries, Inc. All rights reserved. Chrysler and related logos, vehicle model names and trade dress are trademarks of FCA US LLC and used under license by Round 2 LLC. ©2020 FCA US LLC. BATMAN and all related characters and elements © & ™ DC Comics and Warner Bros. Entertainment Inc. (s20) AMT and design is a registered trademark of Round 2, LLC. ©2020 Round 2, LLC, South Bend, IN 46628 USA. Product and packaging designed in the USA. Made in China. All rights reserved.

I. ENGINE ASSEMBLY

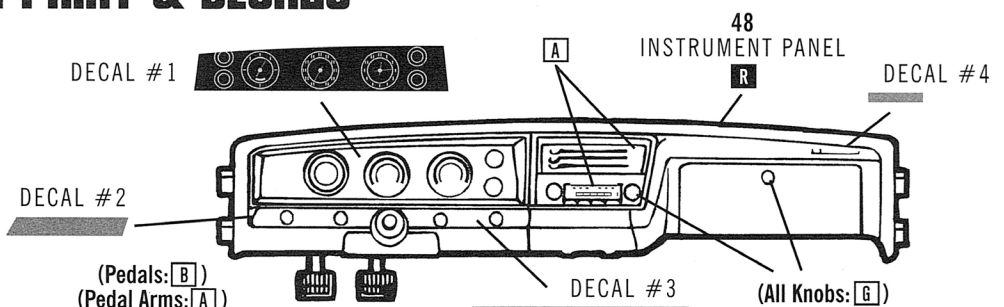
A NOTE: Complete this assembly and paint as a unit, **AA**.



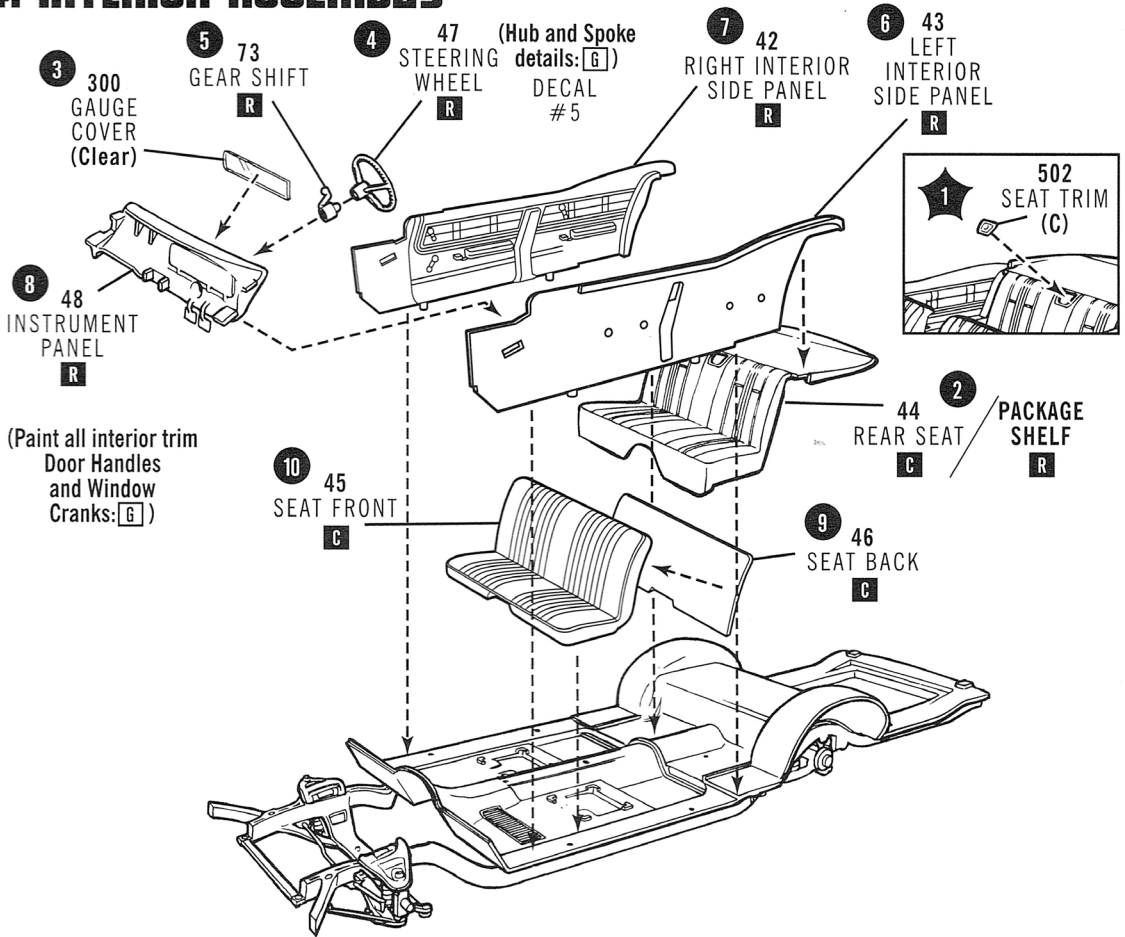
2. CHASSIS ASSEMBLY



3. DASH PAINT & DECALS



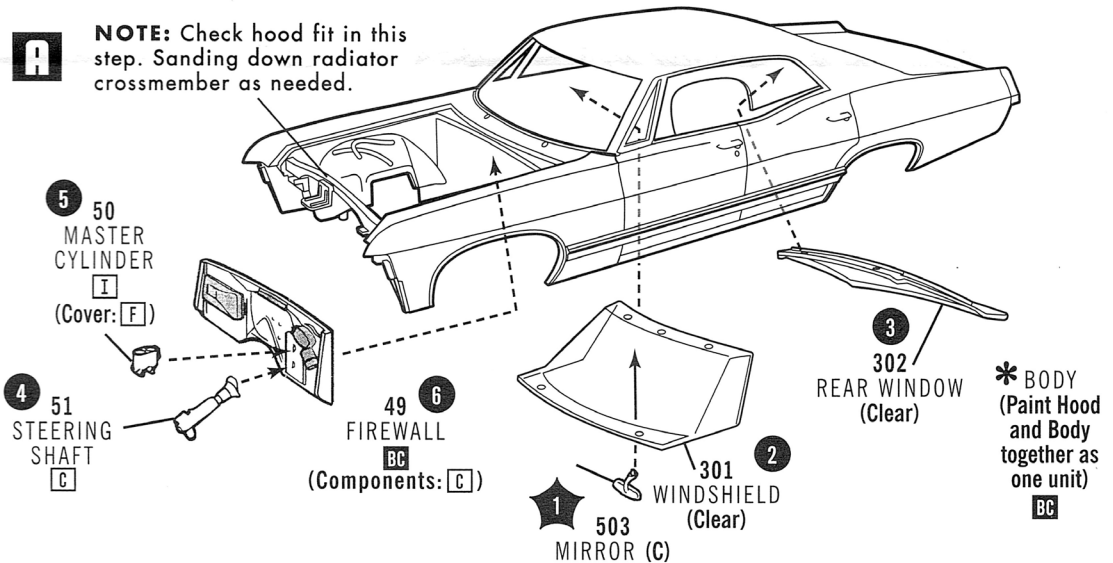
4. INTERIOR ASSEMBLY



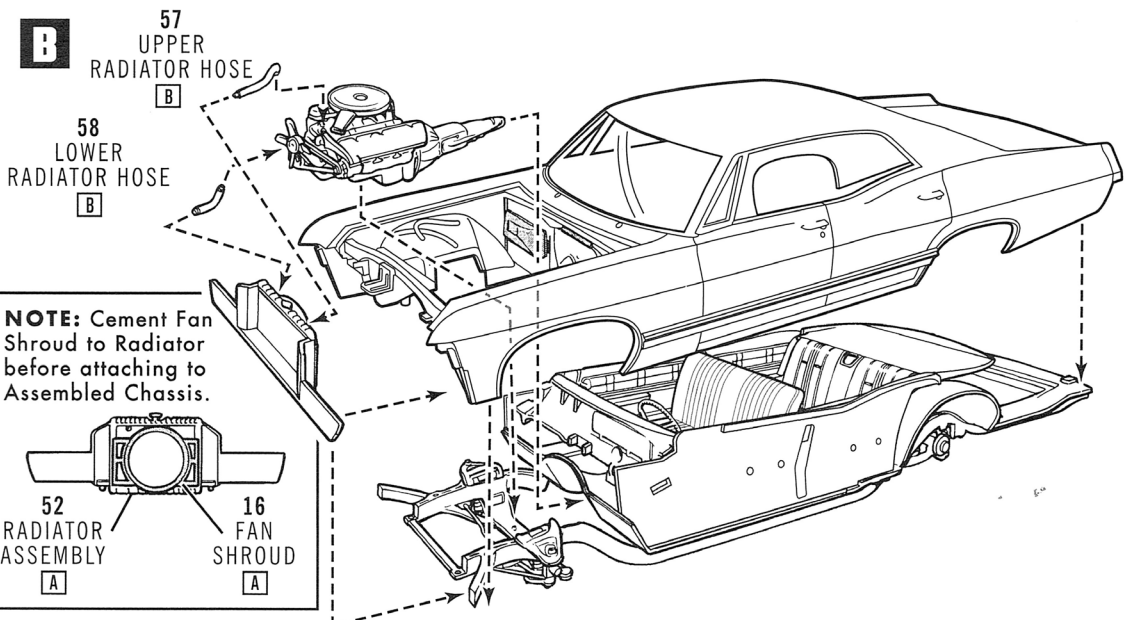
5. BODY ASSEMBLY

A

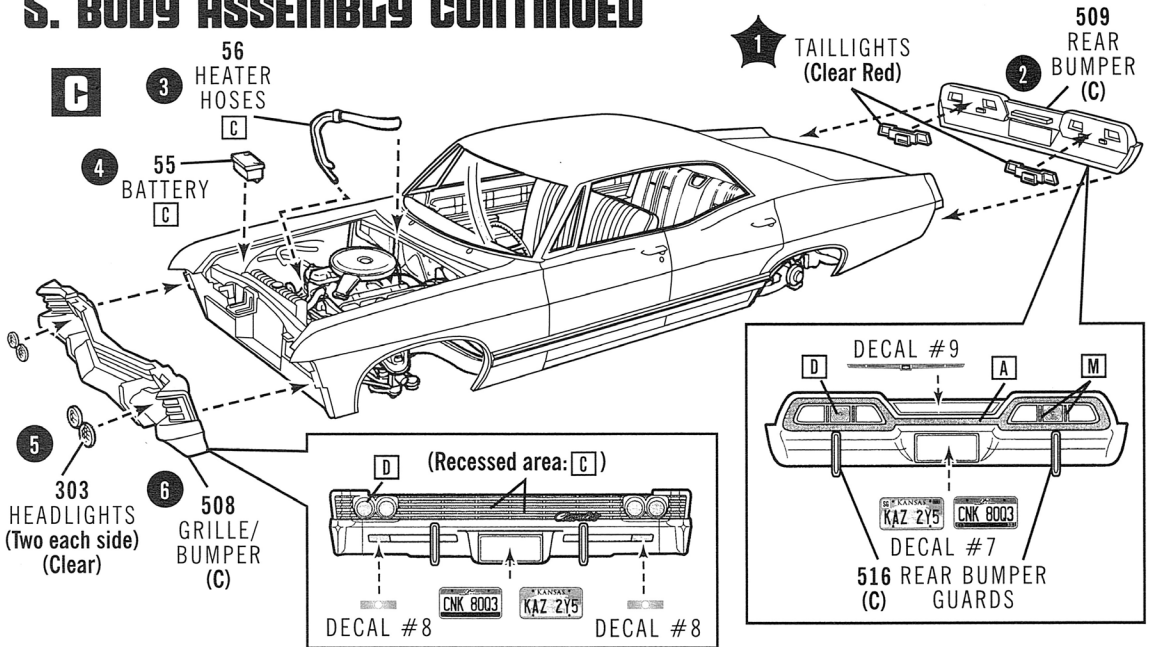
NOTE: Check hood fit in this step. Sanding down radiator crossmember as needed.



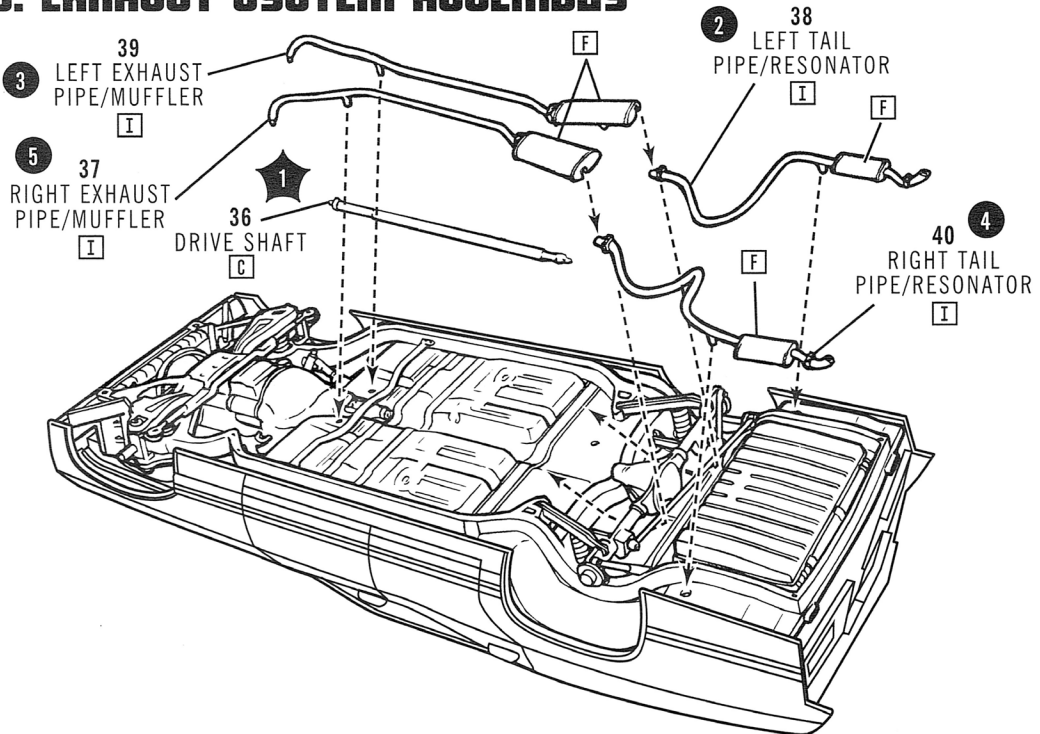
B



5. BODY ASSEMBLY CONTINUED

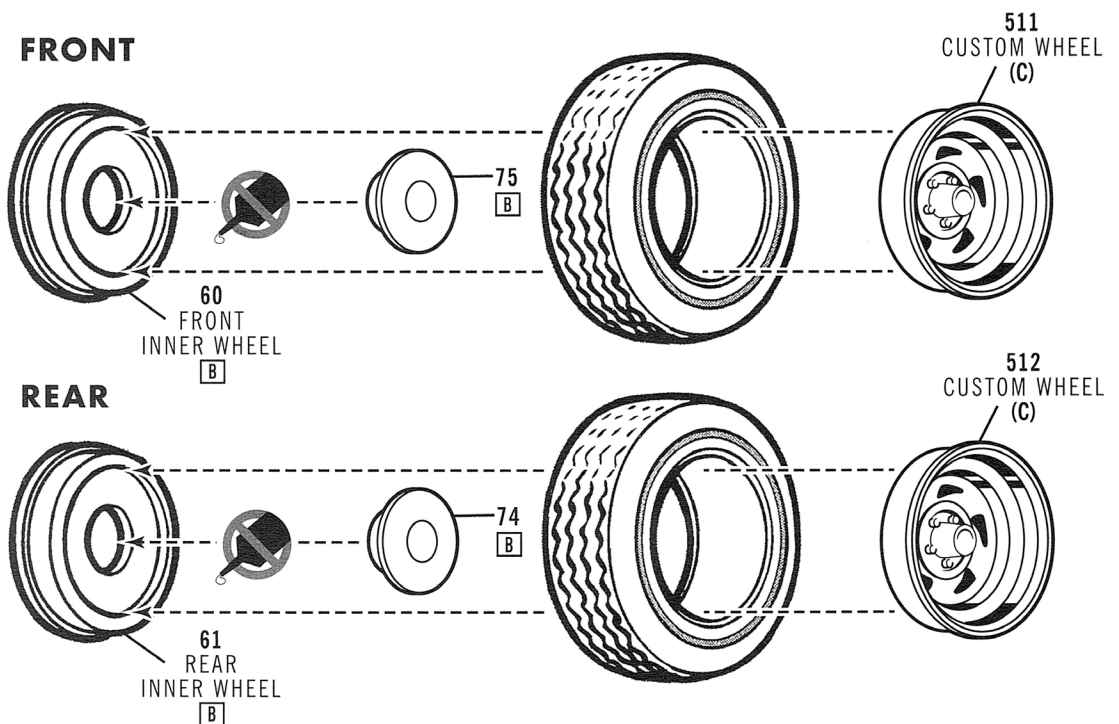


6. EXHAUST SYSTEM ASSEMBLY

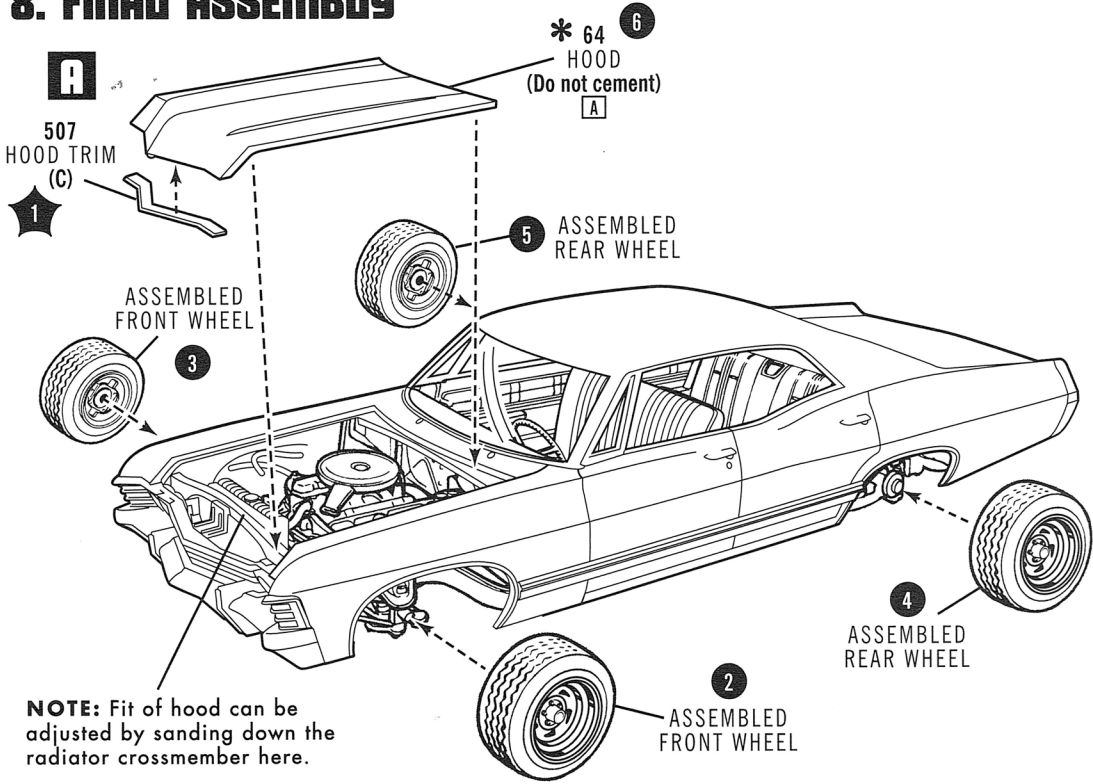


7. TIRE/WHEEL ASSEMBLY

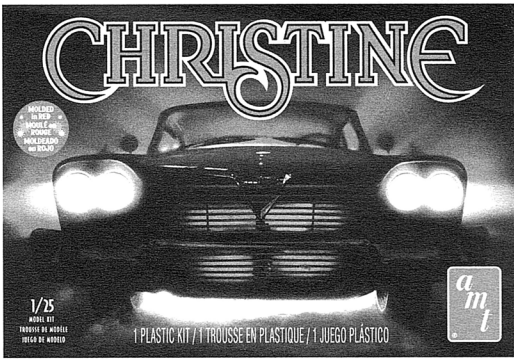
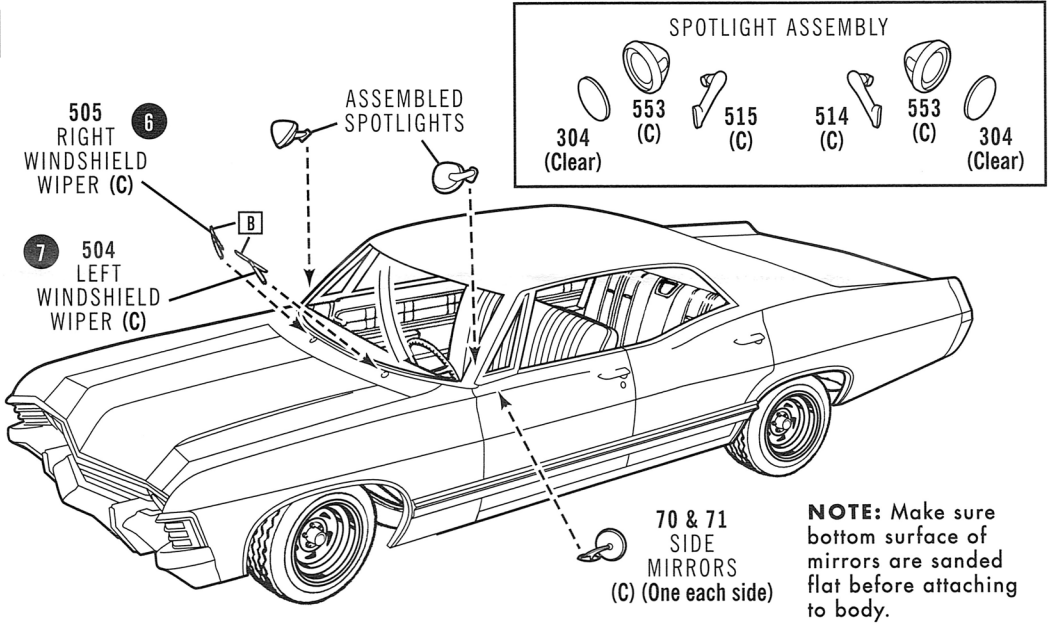
(Assemble 2 sets of each shown)



8. FINAL ASSEMBLY



B



LOOK FOR MORE TV, MOVIE AND MUSCLE CARS ONLY FROM...

