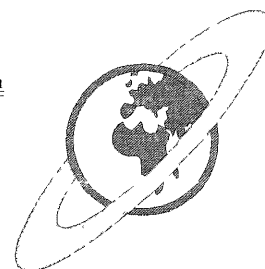


# FW200 C-4 WING SPAR

Nautilus Models

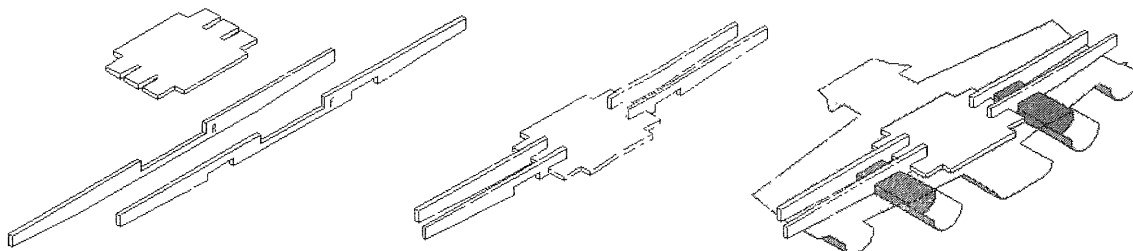
For Trumpeter

#48-802



Thank You for purchasing this Nautilus Product

This set has three pieces: the Front Spar (F), Rear Spar (R) and the Mounting Base (B). It is designed to correct alignment and strength issues reported with the Trumpeter 1/48 Focke-Wulf 200C-4 Condor (kit #2814)



Remove the pieces from the wood by cutting the scored areas. Glue the spars onto the base using carpenters wood glue or super glue. The base is symmetrical, but be sure to mount both spars to the same side of the base as shown.

The assembly is designed to fit into the lower center wing panel (kit part B1) with the rear spar being flush against the aft edge of the main gear wheel wells (kit parts A23 & A24) Assemble as instructed in step 21, inserting the spars before the upper wings (parts C7 & C8). There is no need to remove any of the supports molded into the upper wings. Assemble the lower outer wing panels (kit parts B5 & B12) as shown.

The mounting base will fit under the floor of the main cabin with no need to cut or otherwise modify the plastic parts of the kit. Mount the wing assembly to the fuselage as shown in step 23.

If you have any problems, please contact us at  
Nautilus Models  
PO BOX 564  
Bagdad, FL 32530  
nautilusmodels@gmail.com  
<http://nautilusmodels.com>

