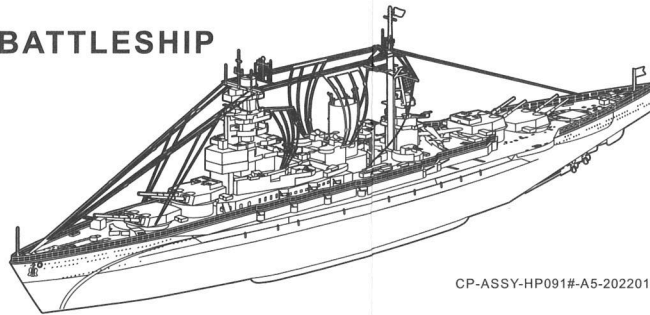


NAGATO CLASS BATTLESHIP HP091

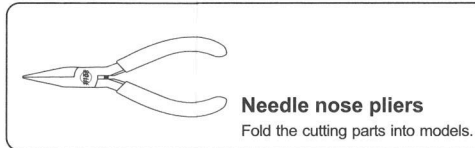
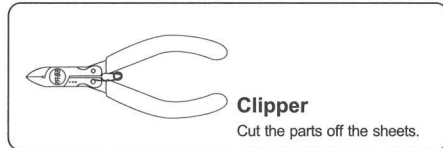


CP-ASSY-HP091#-A5-20220118

Installation Reminder

WARNING – Please handle metal sheets with care. The parts may have sharp edges that could cut or scratch skin. Keep away from children.

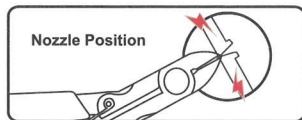
• Prepare tools:



It is recommended to use piececool authentic assembly tools to build or fix the design. It is tailor made for the metal pieces and user friendly.

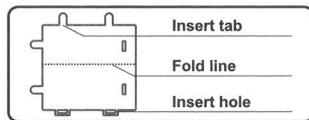
• Installation Method:

a. Remove the parts



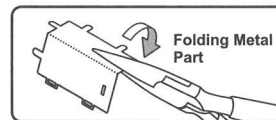
Please use the clipper to cut the nozzle position and remove the parts.

b. Identify the parts



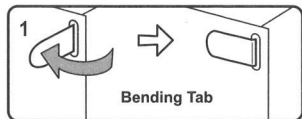
Identify the insert tab, fold line and the insert hole.

c. Folding the parts

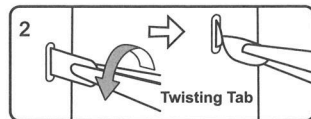


Please use the needle nose pliers to fold the cutting parts into models.

d. Retaining the parts

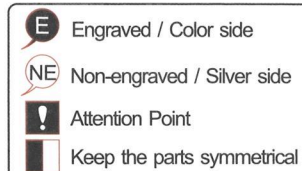


● Insert the hole, bending tab with angle 90°



▲ Insert the hole, twisting tab with angle 90°

• Attention:

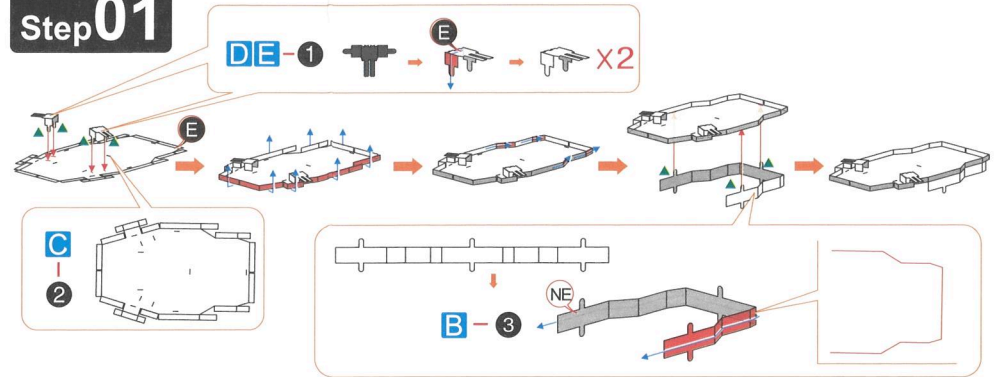


When cutting metal parts, please do not cut the "insert tab" as "nozzle position". Only cut the parts of the current step when cutting the parts. Do not cut all the parts at one time to avoid loss.

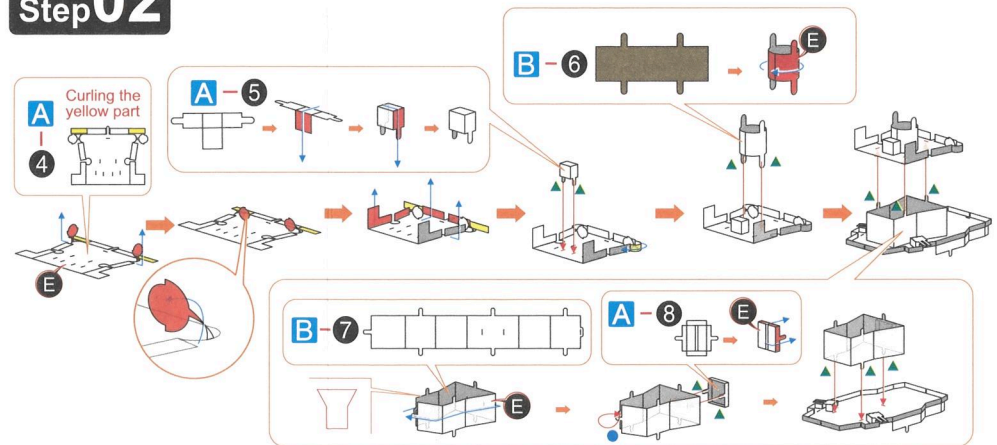
When encountering the parts of the folding line, please pay attention to the front and back of the metal sheet and the direction of the folding. According to the direction indicated in the instruction, cut lightly and fold slowly. It is best to fold it once. Do not fold it repeatedly to avoid damage to the parts.

Assembly Guide

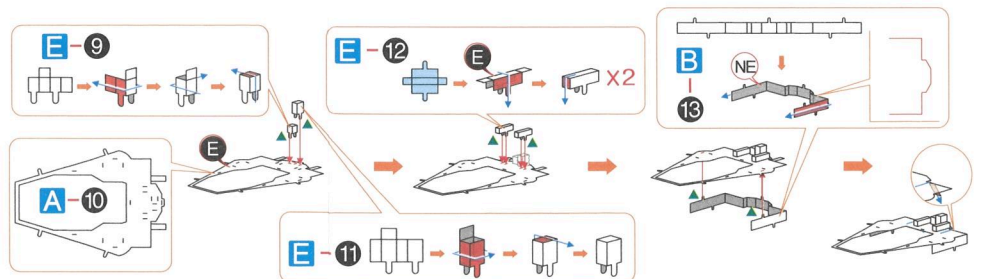
Step 01



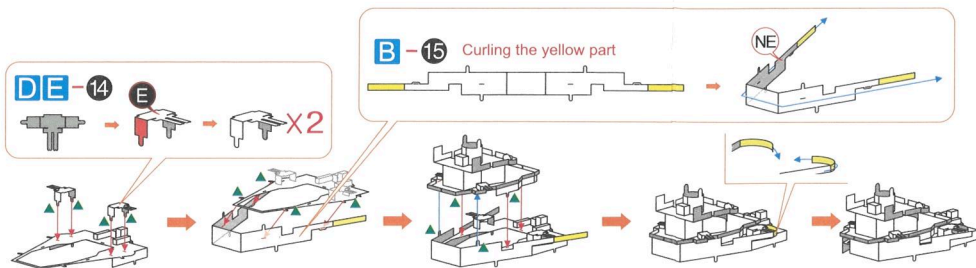
Step 02



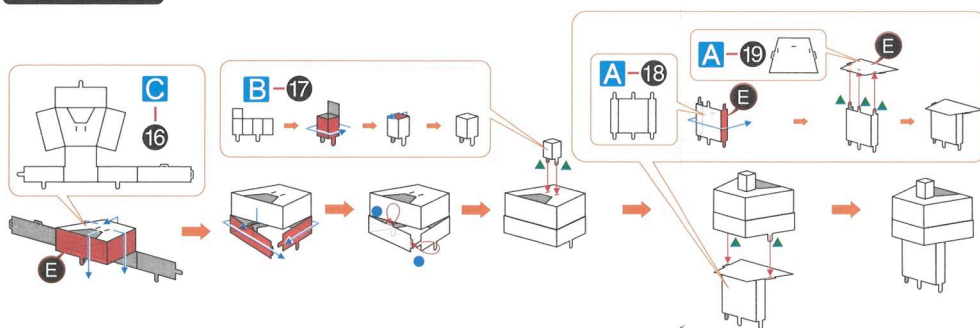
Step 03



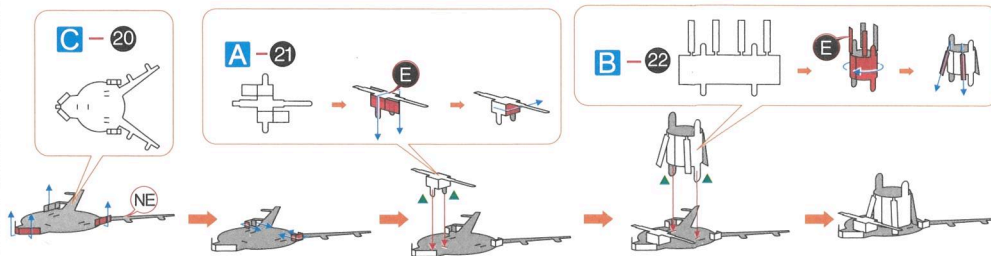
Step 04



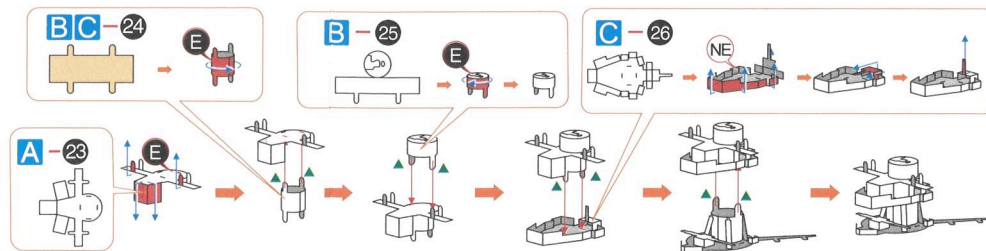
Step 05



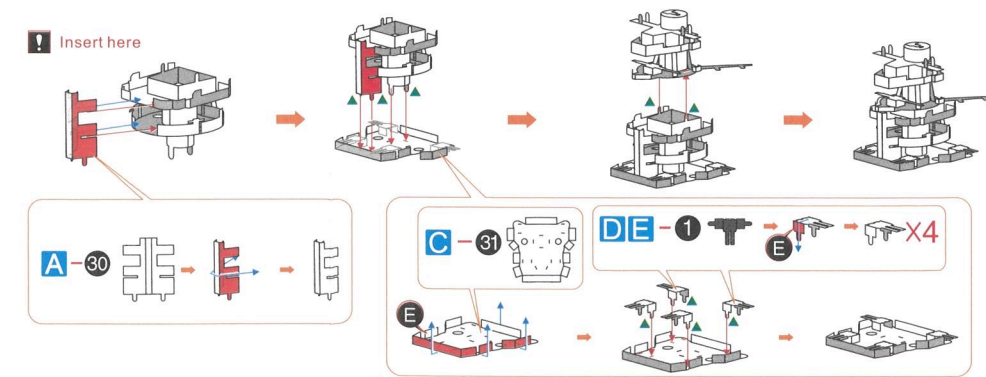
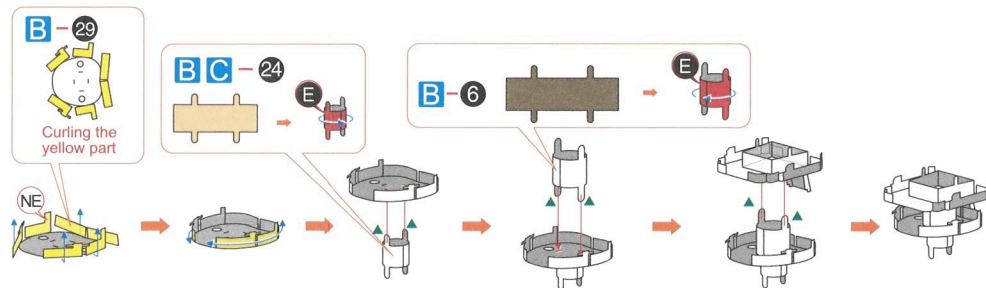
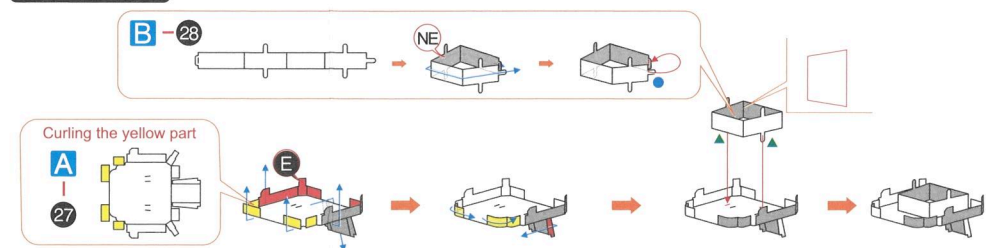
Step 06



Step 07

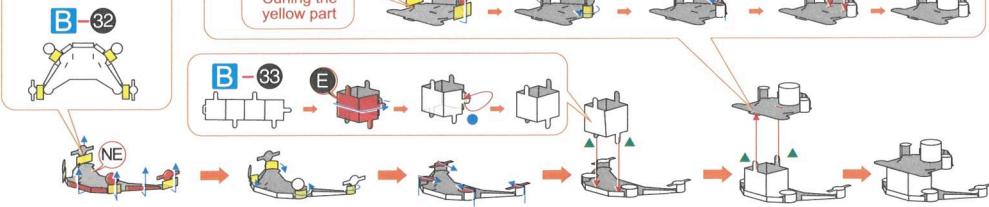


Step 08

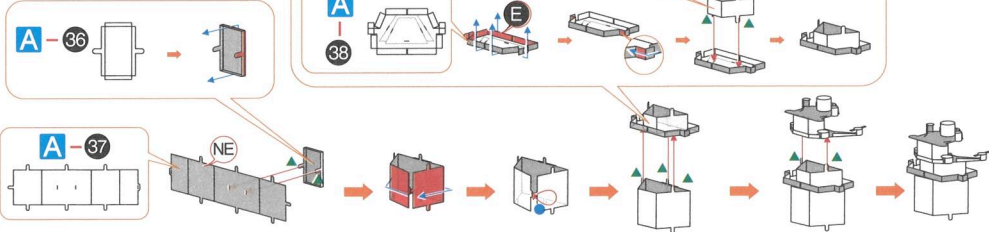


Step 09

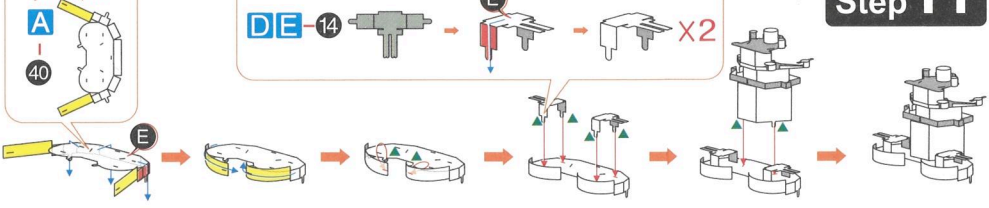
Curling the yellow part



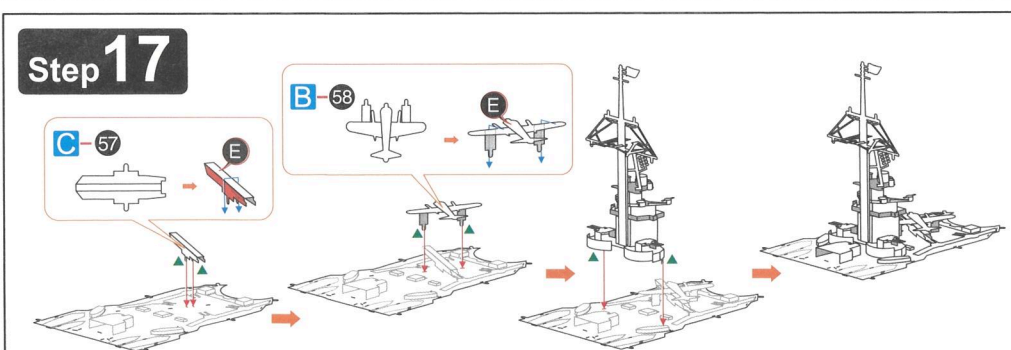
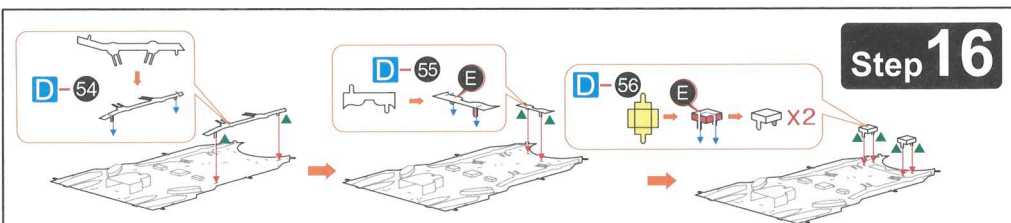
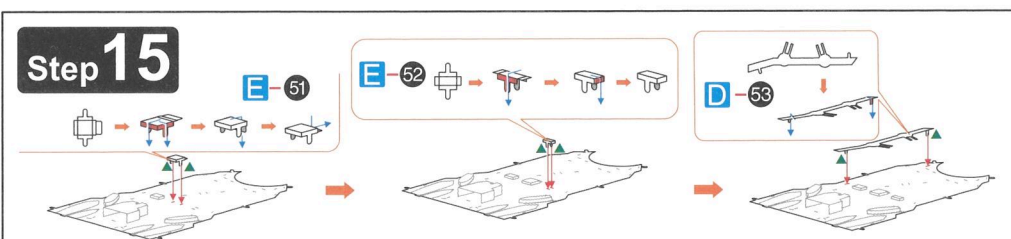
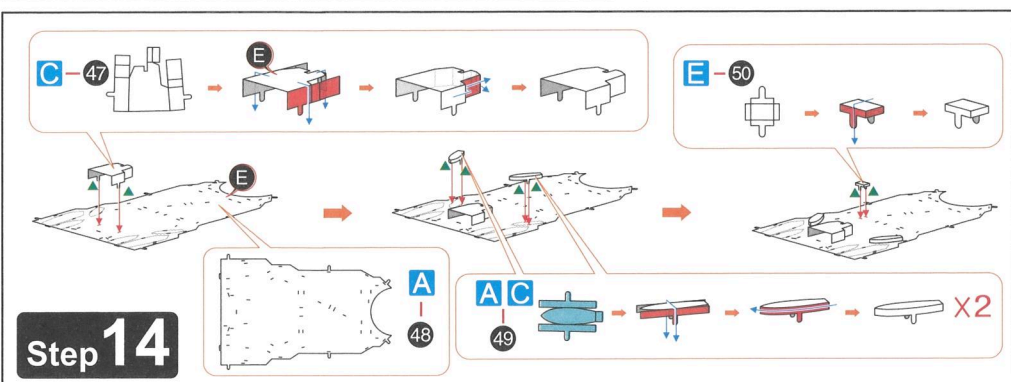
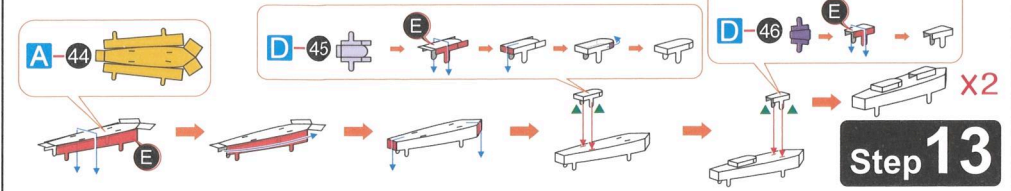
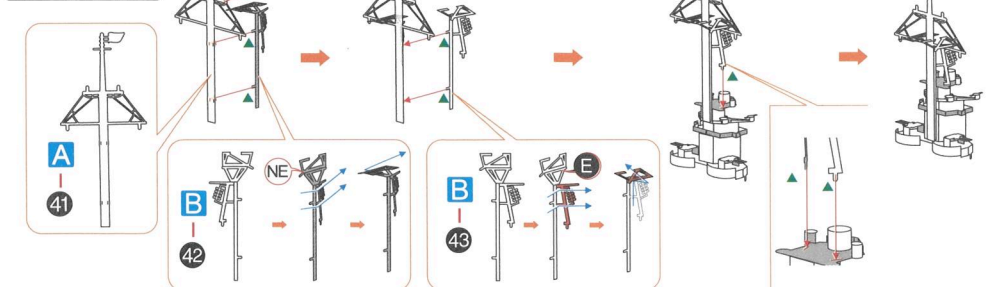
Step 10



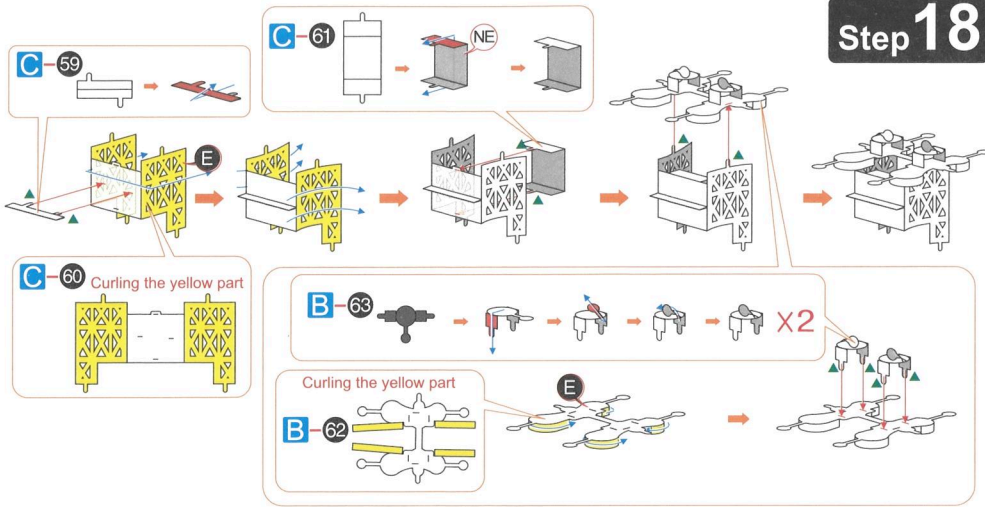
Curling the yellow part



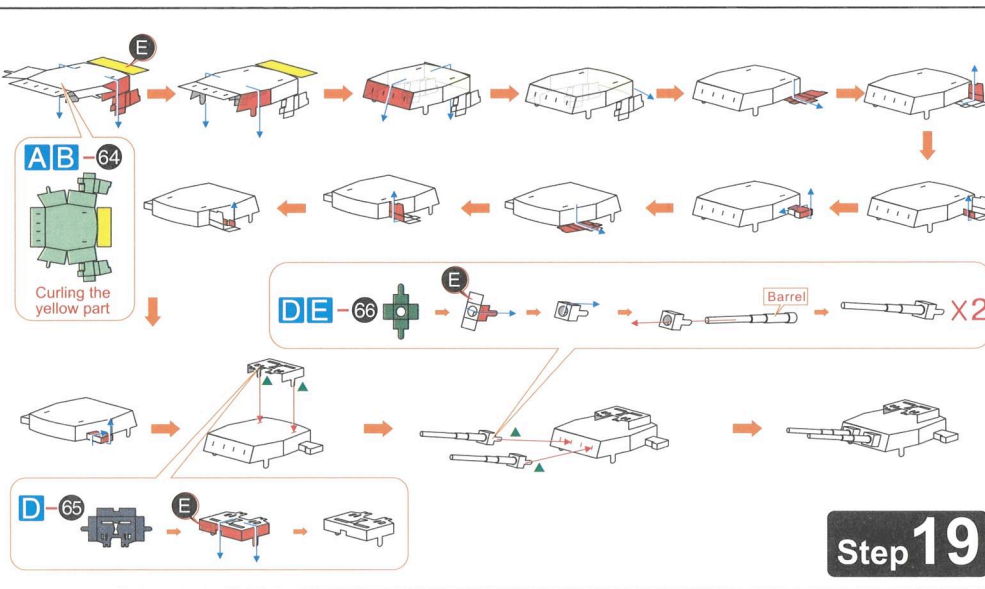
Step 12



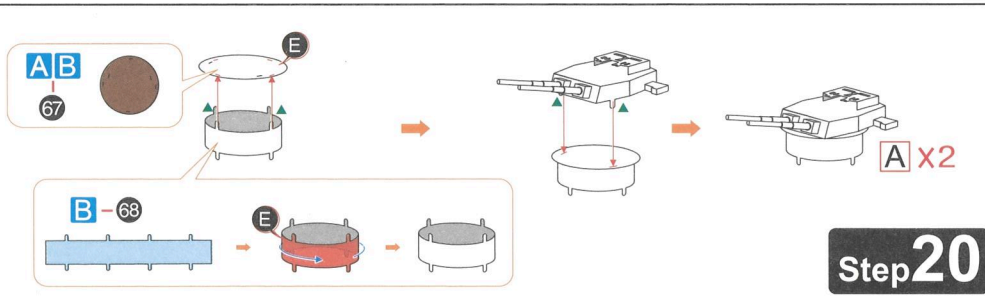
Step 18



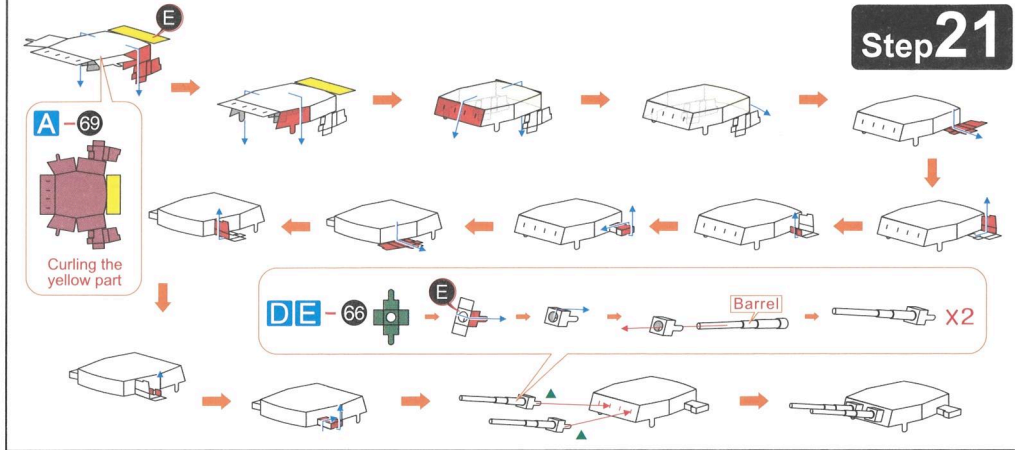
Step 19



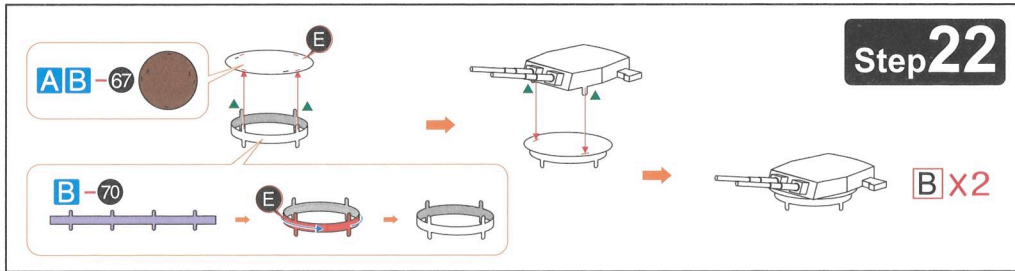
Step 20



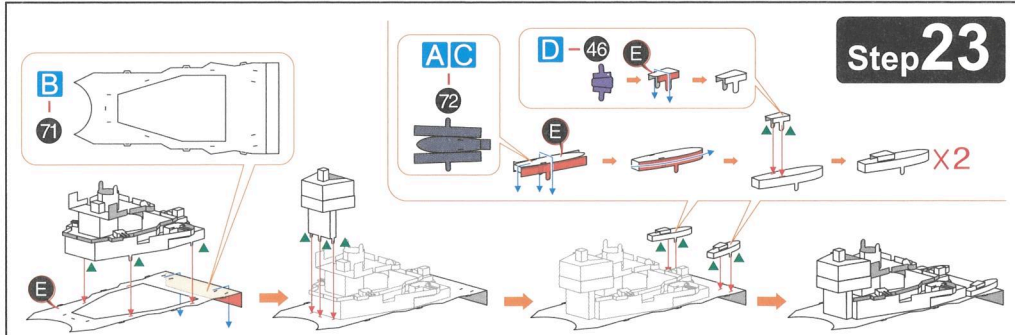
Step 21



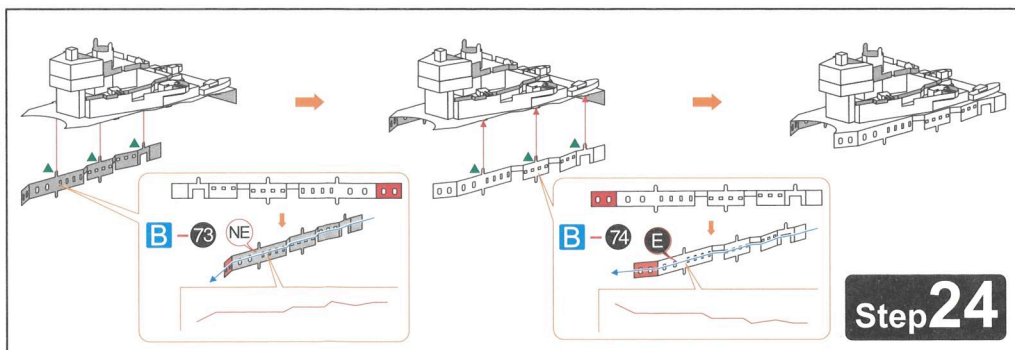
Step 22

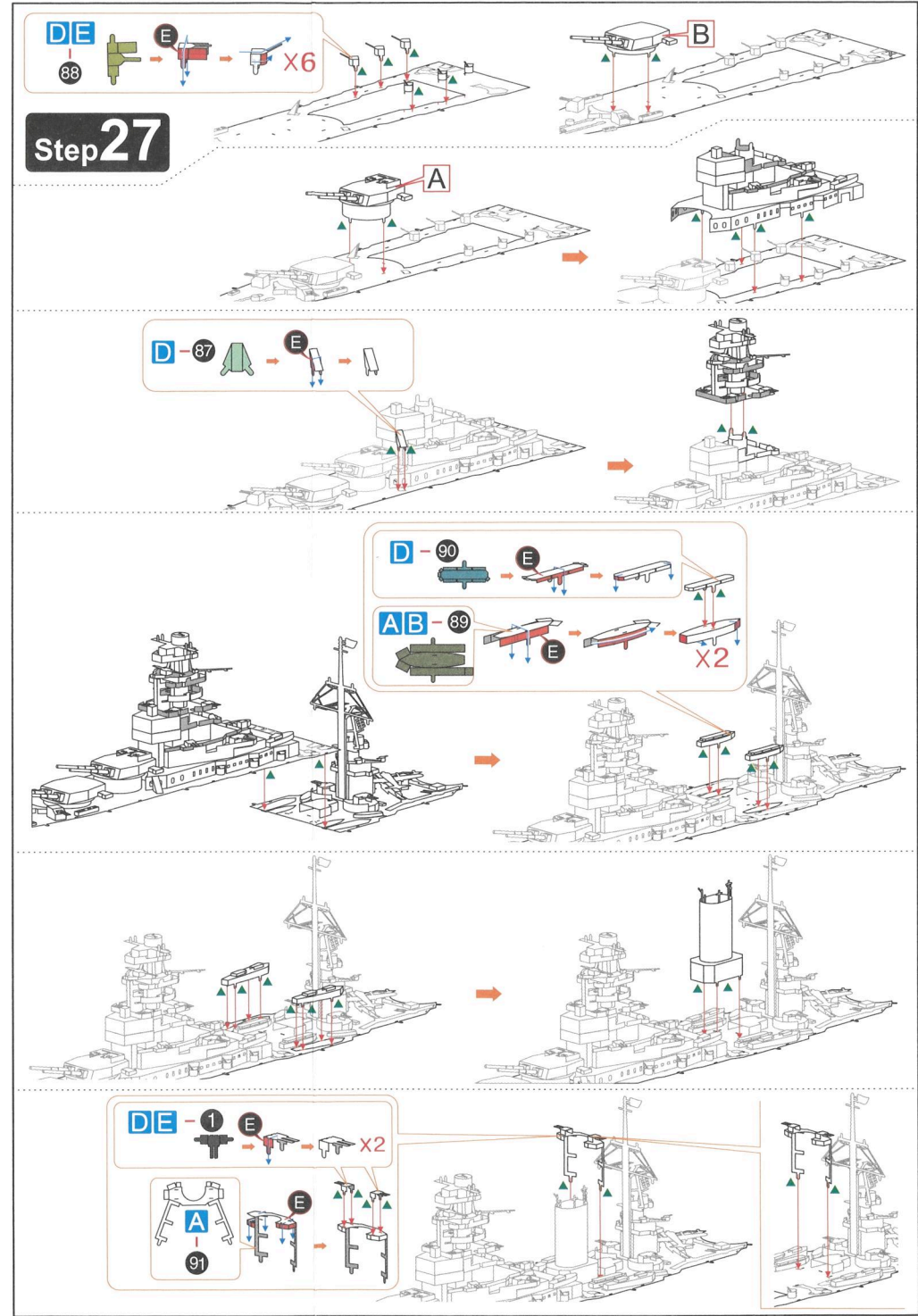
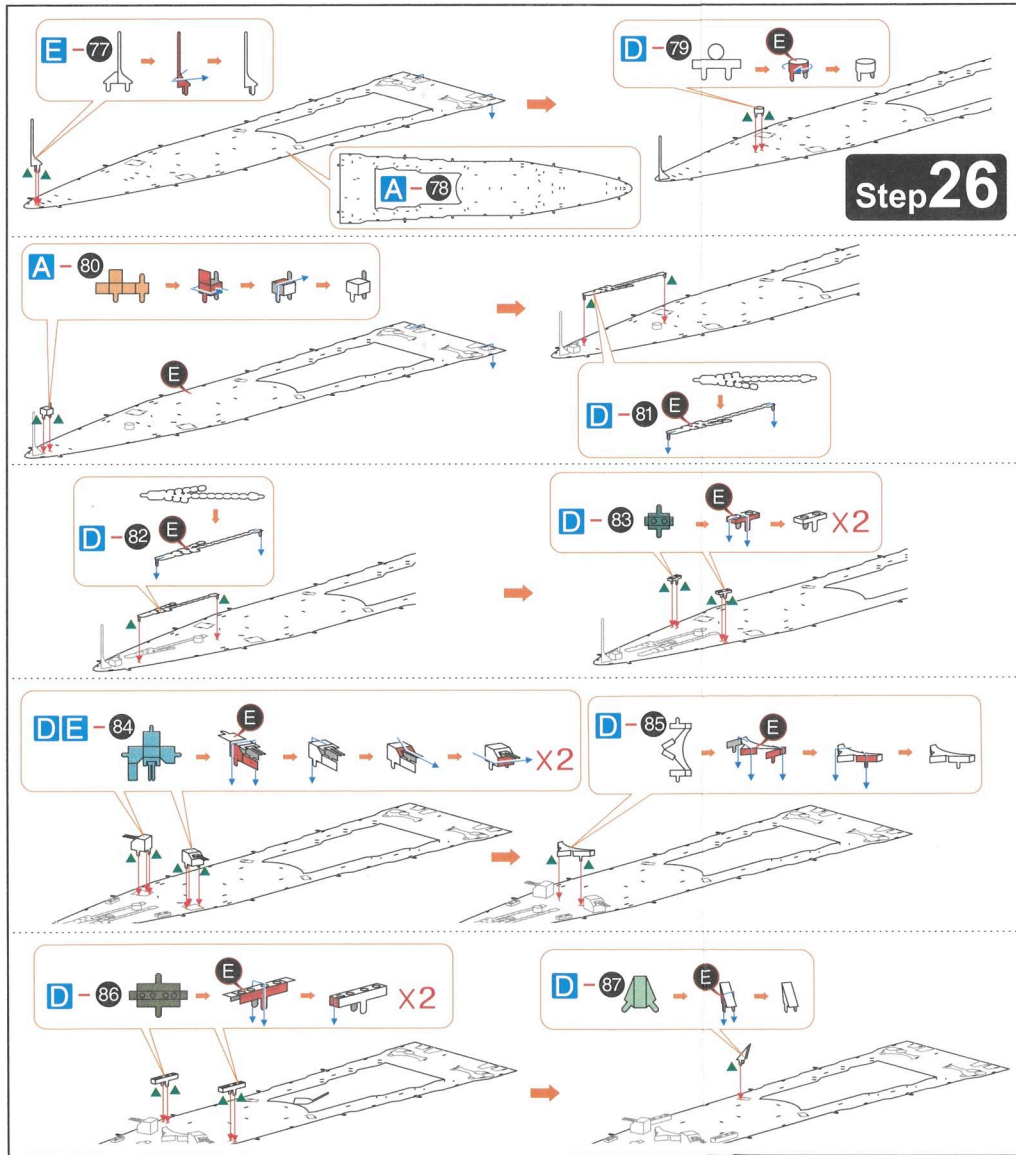
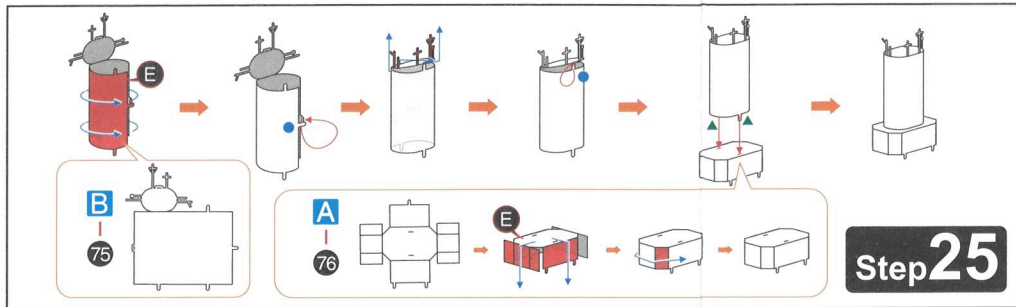


Step 23



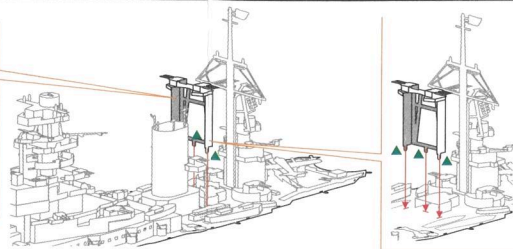
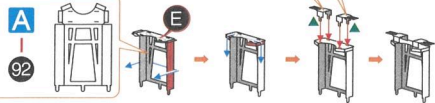
Step 24



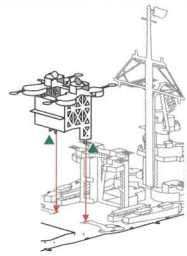
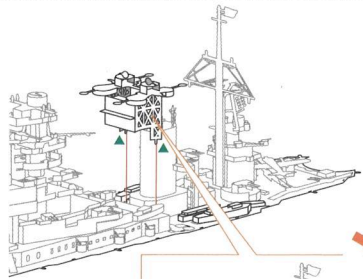
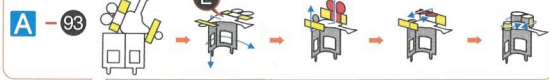


Step 28

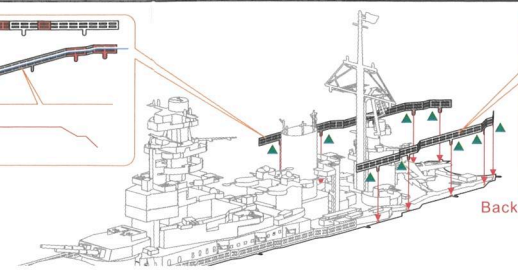
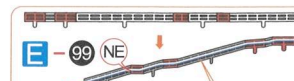
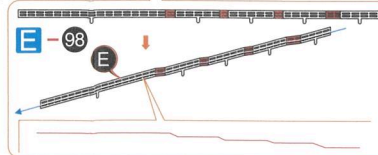
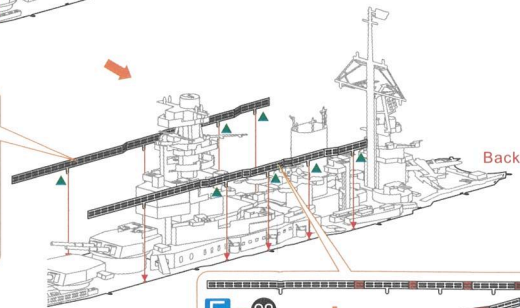
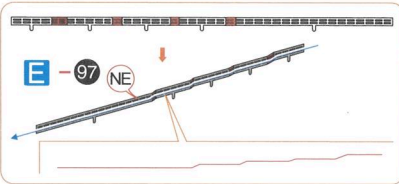
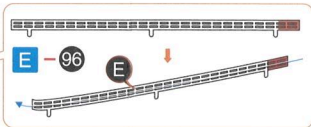
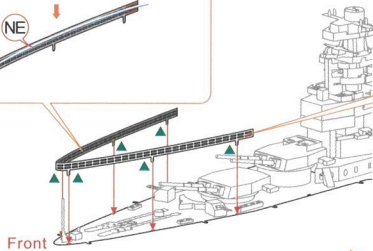
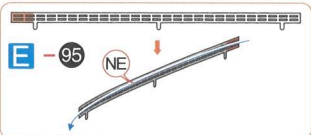
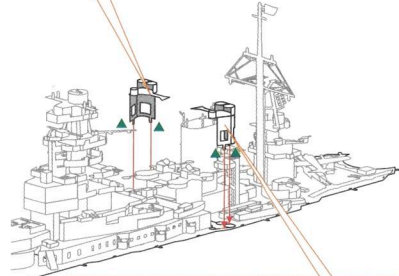
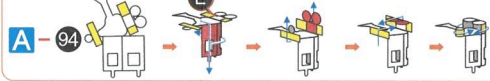
DE - 1 E X2



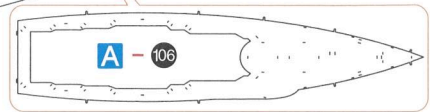
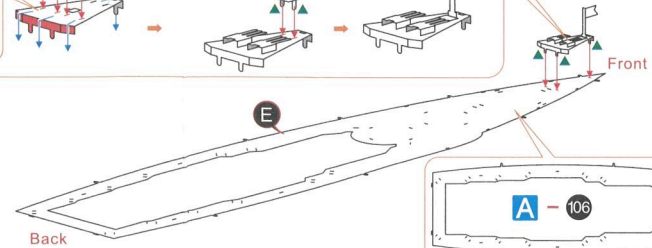
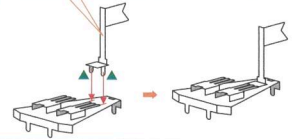
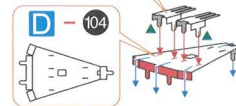
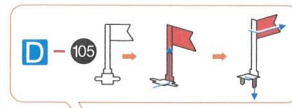
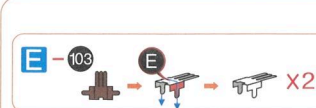
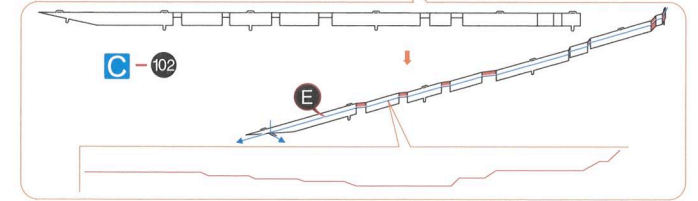
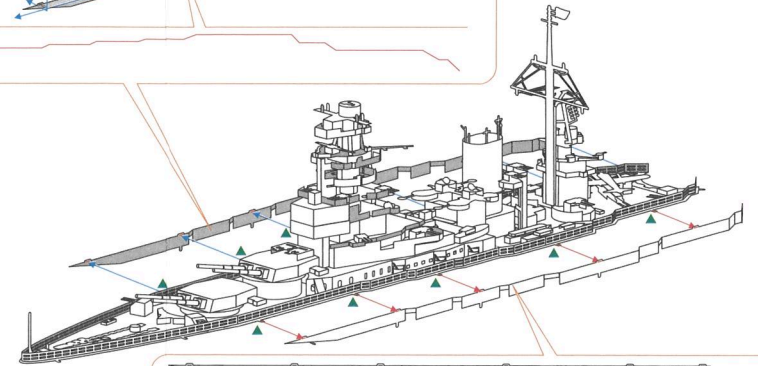
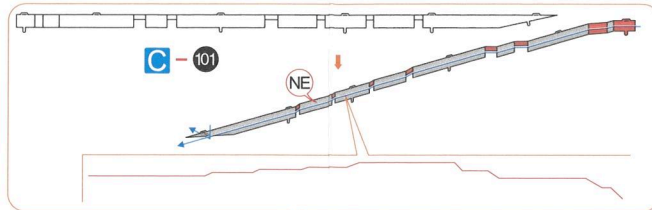
Curling the yellow part



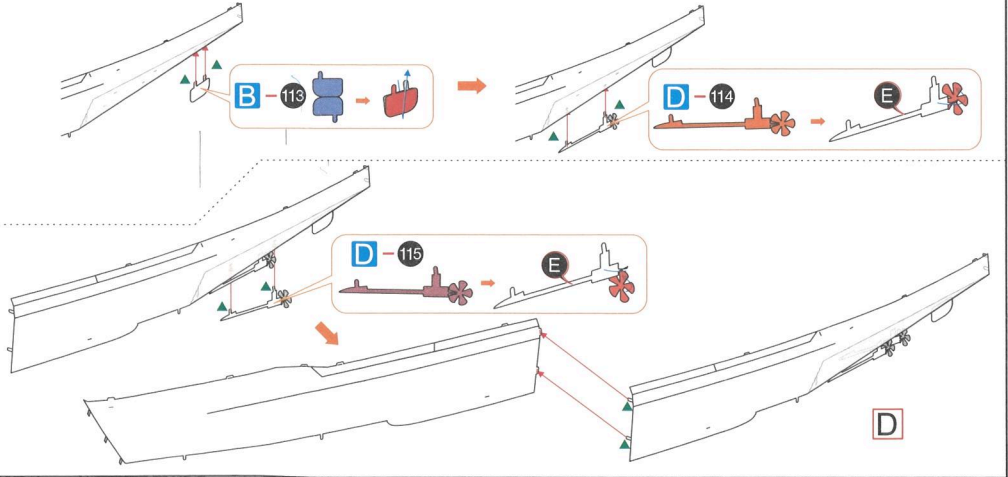
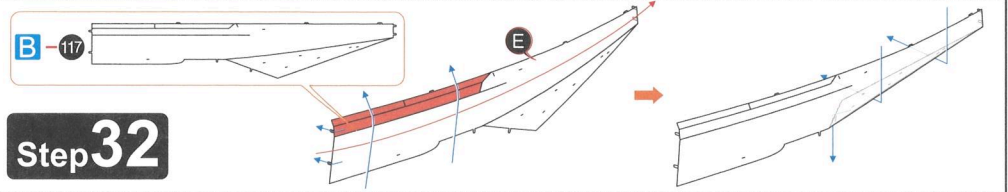
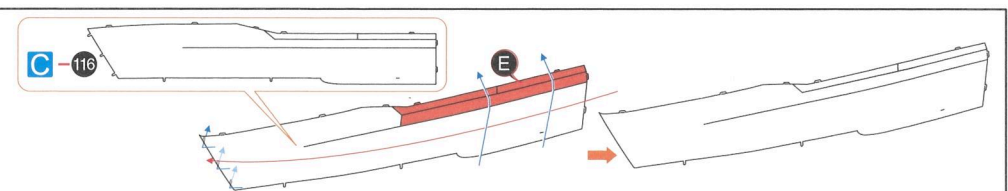
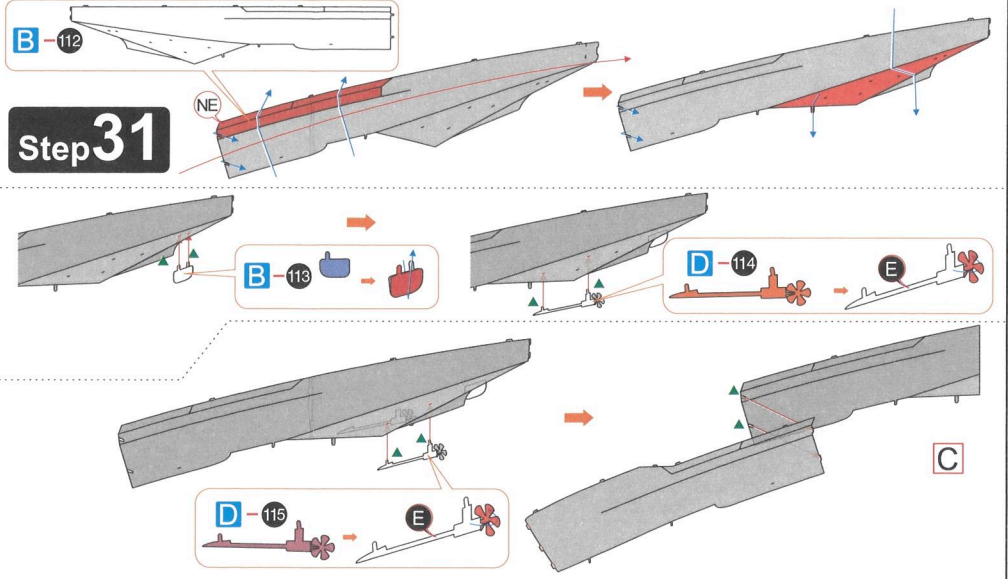
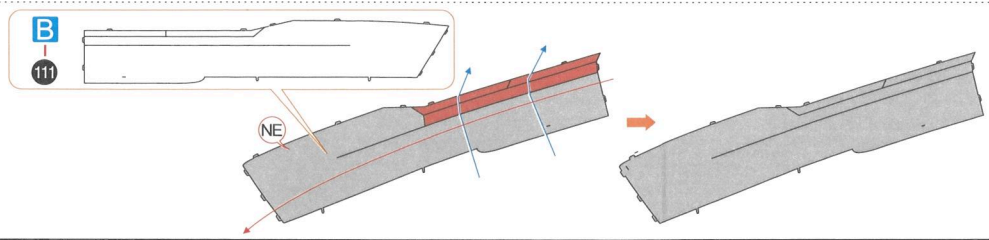
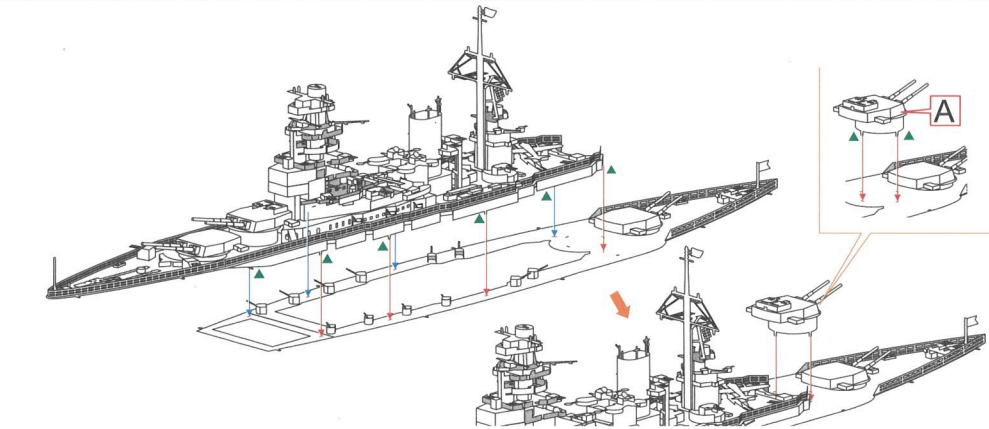
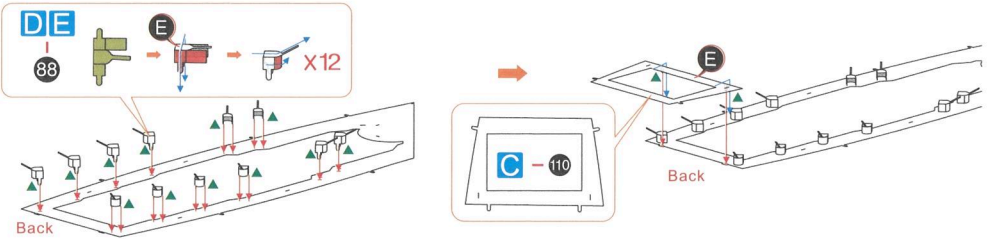
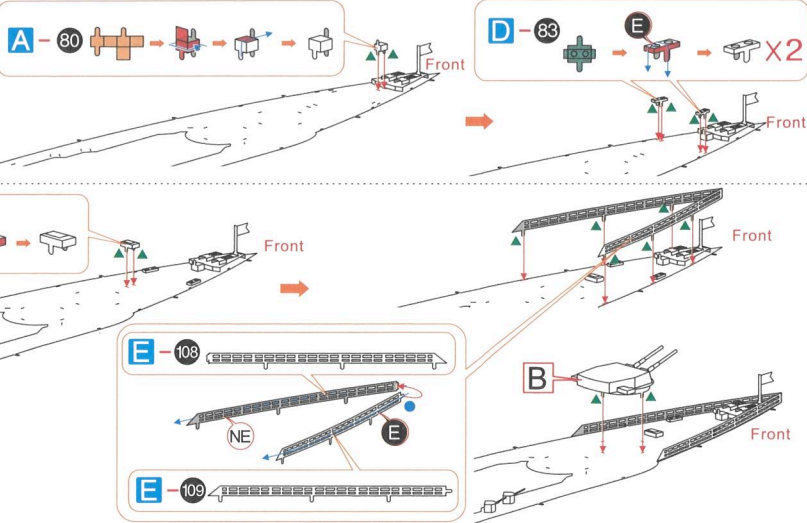
Curling the yellow part

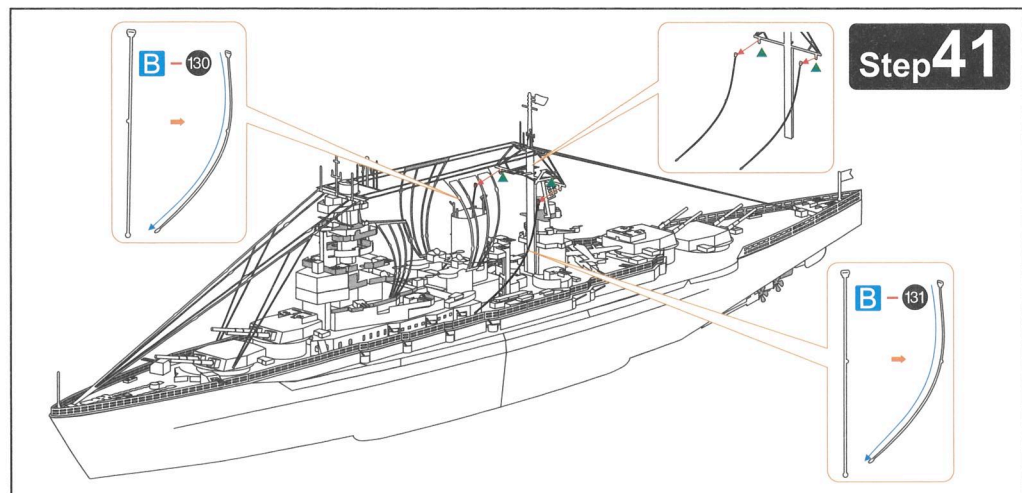
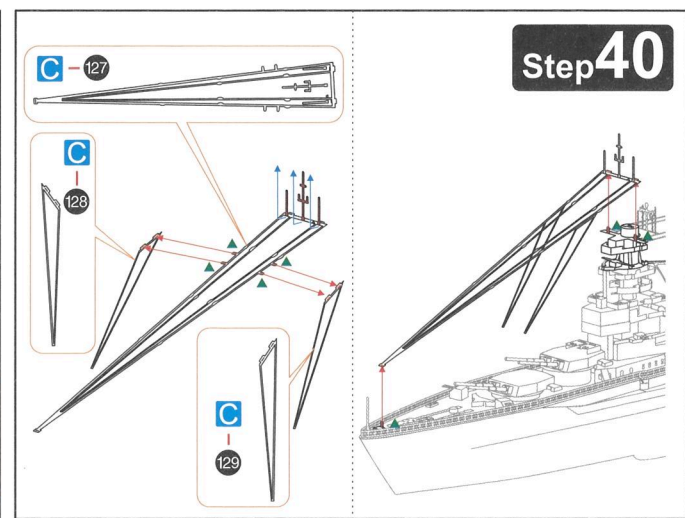
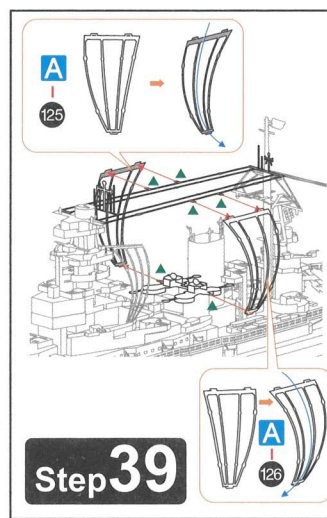
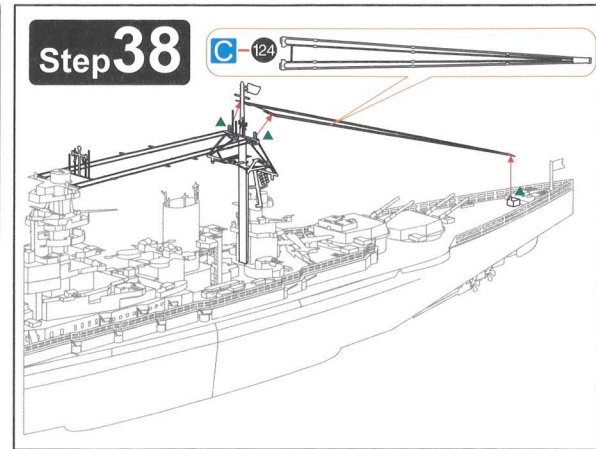
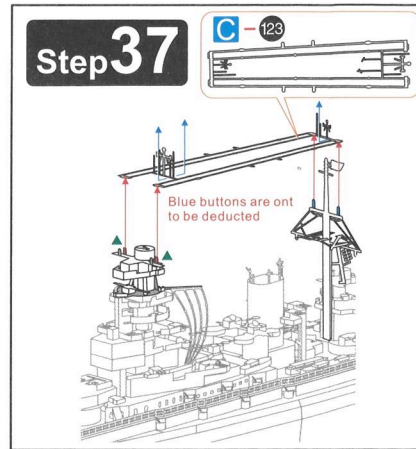
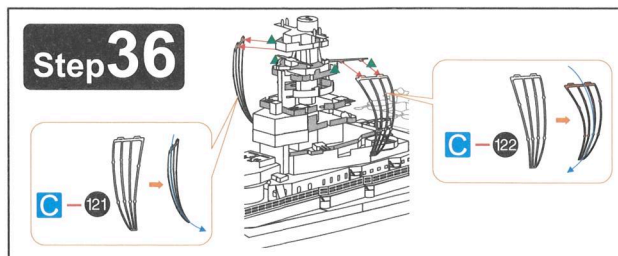
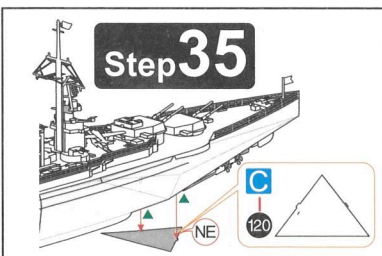
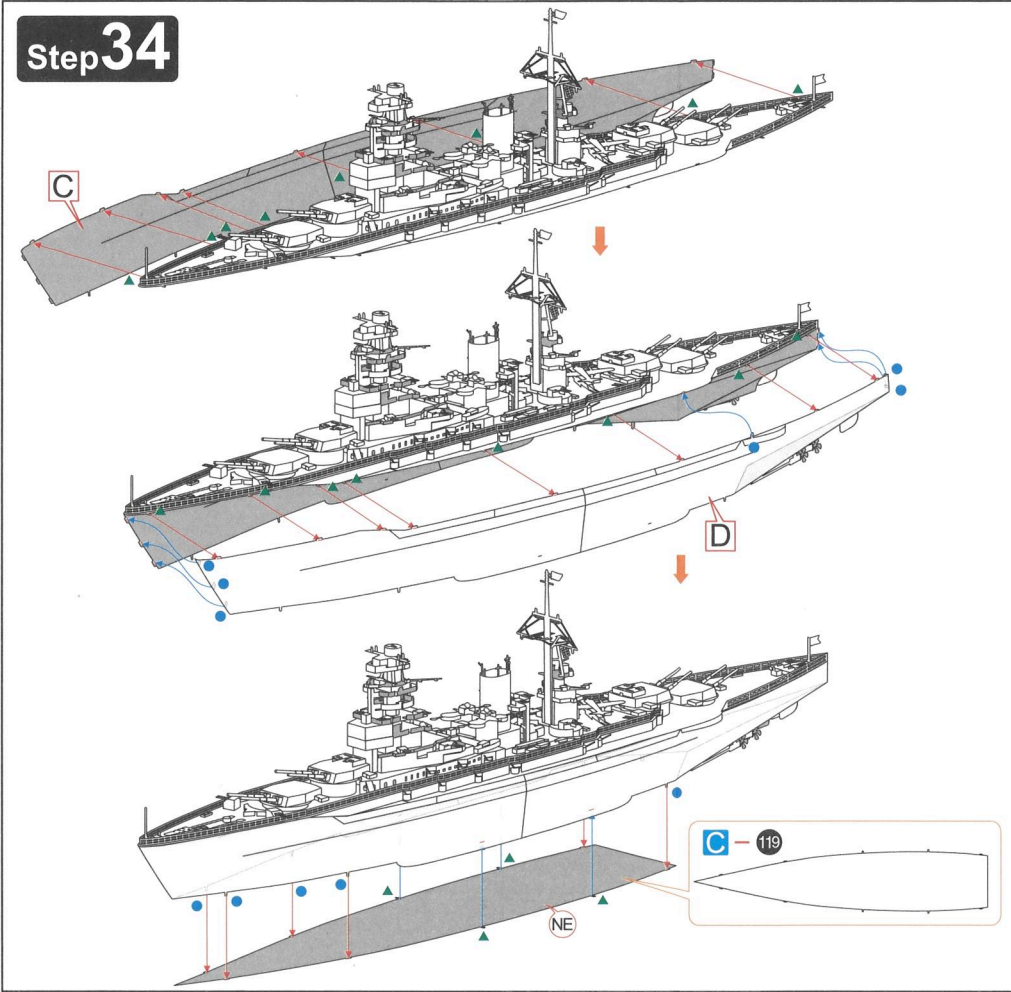
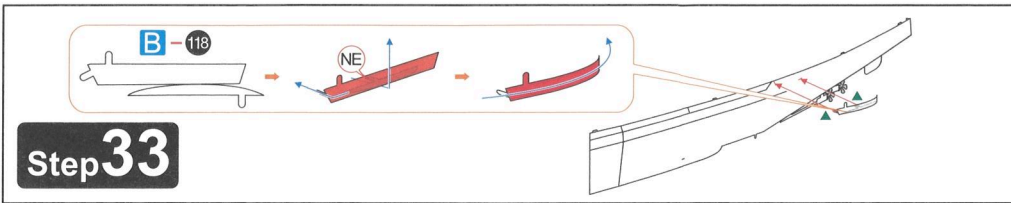


Step 29



Step 30





Parts Identification

NAGATO CLASS BATTLESHIP
HP091

Metal Sheet

