

**Modern Retail Unit
INSTRUCTIONS**

PLEASE - PAY ATTENTION
Read through the instructions and familiarise yourself with the kit before you start any building. Follow these step by step instructions carefully to make this wonderfully detailed kit.

Kit Components



Sheet A. Sheet B. Sheet C.
Printed sheets with the components to make this kit.



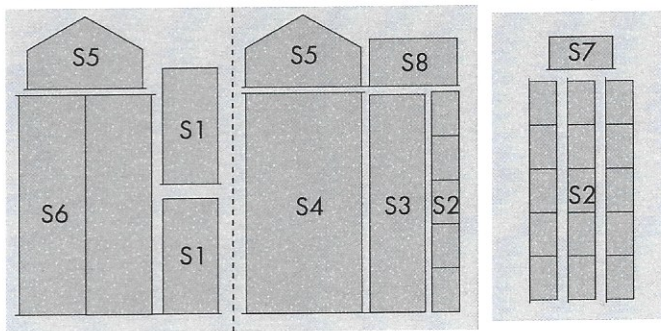
Sheet D.
A printed sheet with aisle displays and shop signs.



Glazing sheet.
Clear plastic glazing to fit behind the window openings.



Ridge Tile Sheet
Strips of ridge tiles to add to the roof.



Two Strengthener sheets - 1 large, 1 small.
A thick grey card with inner strengthening parts.

Below is a key to each of parts with an abbreviated code, this code will be referenced in the instructions.

- S1 - Lower wall joiners (x2)
- S2 - Aisle formers (x20)
- S3 - Internal wall
- S4 - 1st floor
- S5 - Upper wall joiners (x2)
- S6 - Main roof former
- S7 - Entrance base
- S8 - Canopy spacer

PRE-BUILD PREPARATIONS

Tools you'll need to build this kit
(all of which are available on our website:
www.metcalfeamodels.com)

1. A modellers knife
2. A cutting mat
3. A steel ruler
4. A pair of fine pointed tweezers
5. Water colour paint set
6. Metcalfe ultra fine tipped glue applicator
7. Glue (see below)

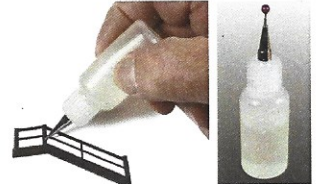
Glues

We recommend using a combination of glues, Speed bond and Rokat card glue, both are produced by Deluxe materials. **Rokat card glue** is an instant, fast drying glue which is great quickly securing components that require little positioning. It also comes with it's own fine tip applicator.

Speed Bond is a slightly slower drying glue which is ideal for the components where careful positioning is required.

UHU solvent free is also a great all round glue and is excellent for fixing the plastic windows.

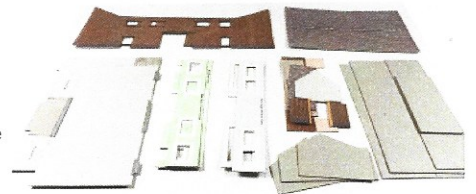
Metcalfe ultra fine tipped glue applicator is essential for applying small amounts of glue to the smaller components. These bottles come in a pack of 3 and are best used with Speed Bond and UHU, simply unscrew the top and fill with the glue.



Extracting the components

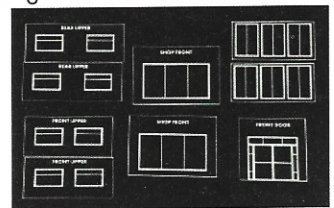
To prevent the components from falling off the sheets they are held secure with scorelines, marked with a → These are cuts that only go about 75% of the way through the card. To release them carefully run the point of your knife along these scorelines and they will come seamlessly away, be very careful your blade does not run off the score and damage the components. Use a steel ruler as a guide especially if using a new sharp blade. Keep the components organised and away from your work area on a piece of card or tray that we will call your builders yard.

Only extract the main parts, leave the small components on the base sheet so they don't get lost.



Windows

Carefully cut out the windows along the outer white line from the glazing sheet, organise and place on a dark piece of card (so that you can see them and they don't get lost) and place within your builders yard until required.



Painting the exposed edges

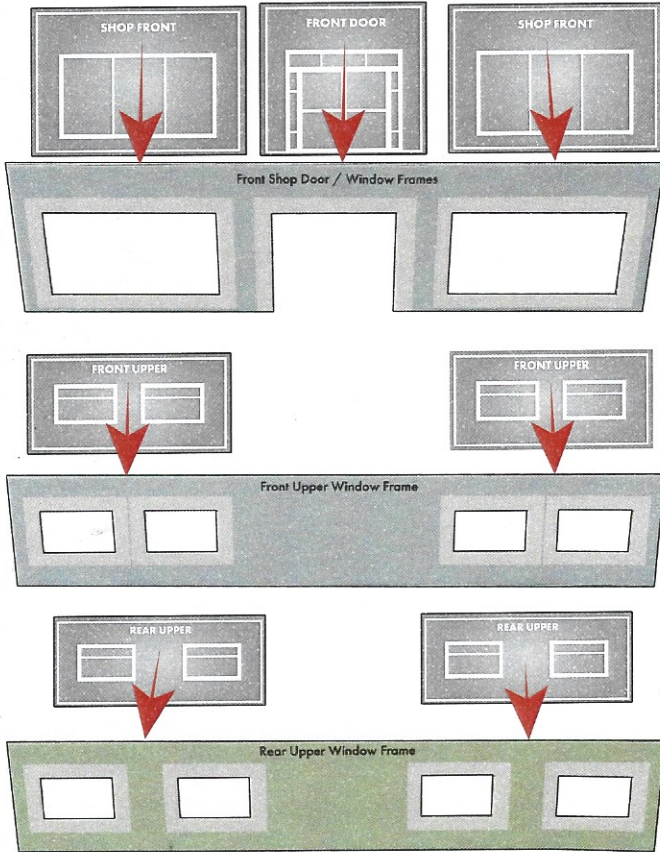
The exposed edges, undersides and folds of the roof sections or wall ends will need to be coloured to match the printed surface. Use some water paints, mix the colour with lots and lots of water, test against the leftover bleed on the base sheet to get the correct shade and colour. The card only has to be tinted, as a solid painted line will make it look worse. Quickly wipe away any excess paint off the printed surface before it dries. The brickwork needs a well watered down orangey brown colour.



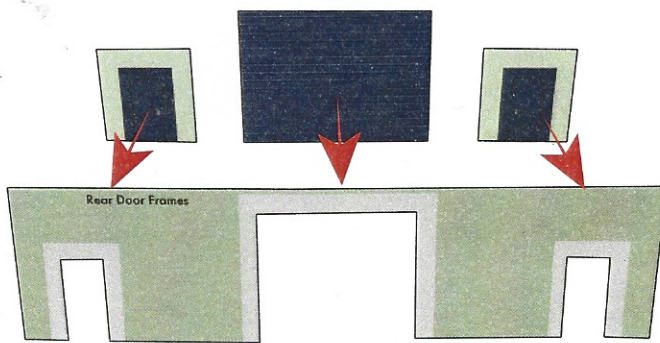
LET'S START TO BUILD!

1 Window & Door Frames

Start off by matching the windows to the corresponding window frames, the front windows match to the light blue front frames, the rear to the pale green rear frames. Glue to the rear of the frames with the matt white window borders fitting flush with the openings.



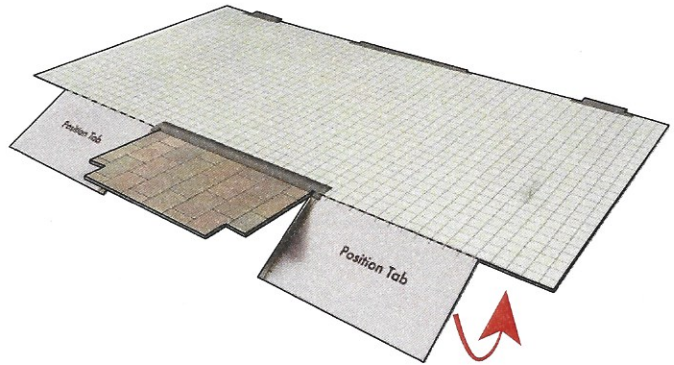
Choose the colour you'd like for the rear doors and fit to the openings, keeping the bottom edges flush.



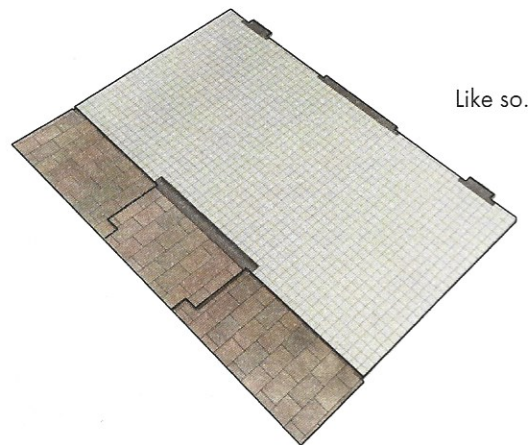
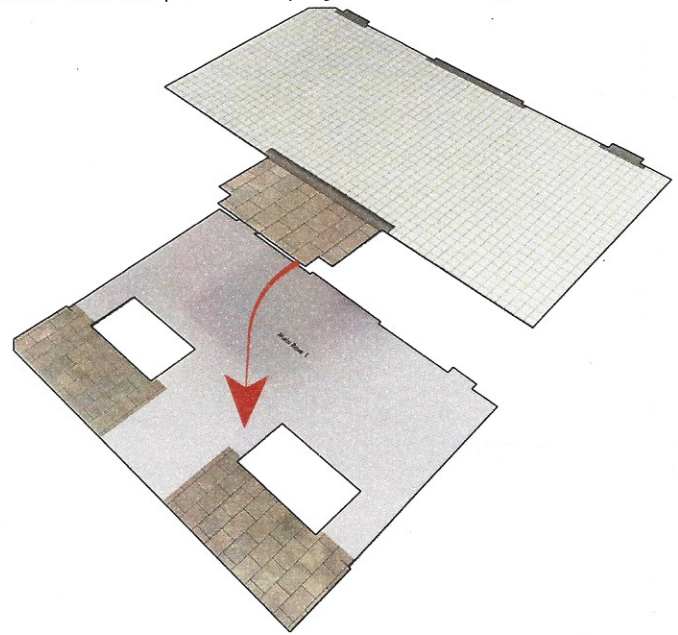
Place the frames back into your builders yard until needed.

2 Main Base

Fold back and glue the two position tabs on the Main base 2.

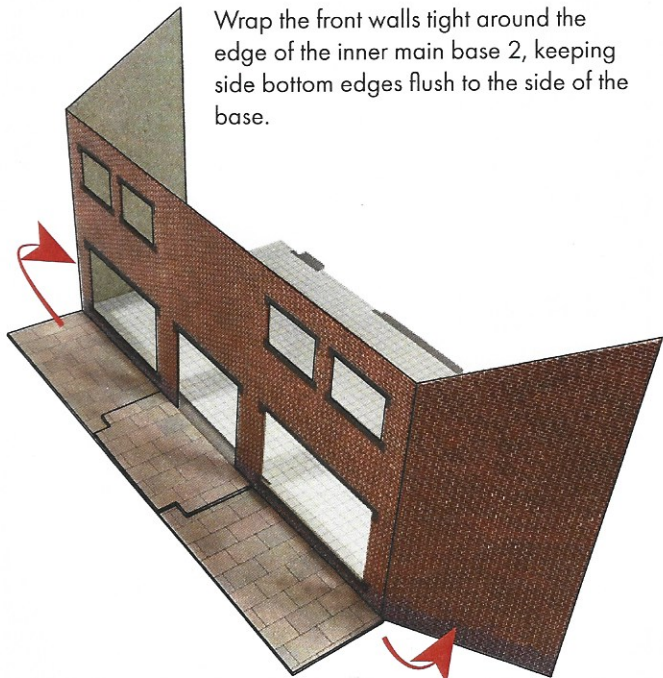


These tabs then slot into the corresponding holes in the Main base. Glue into position keeping all the outer edges flush.



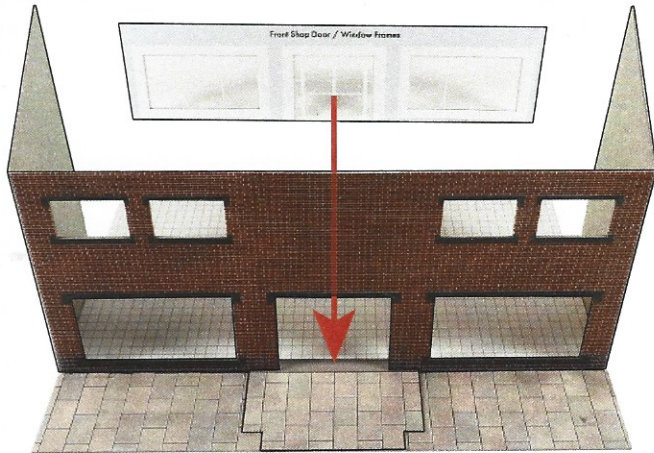
Like so.

3 Main Walls

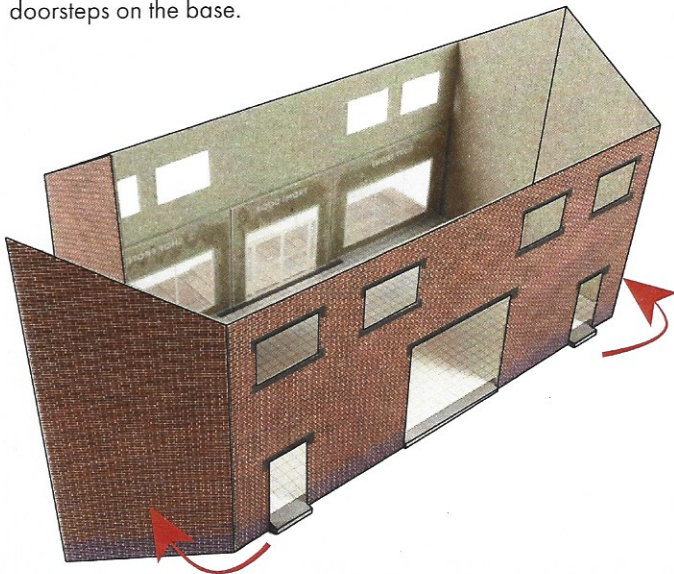


Wrap the front walls tight around the edge of the inner main base 2, keeping side bottom edges flush to the side of the base.

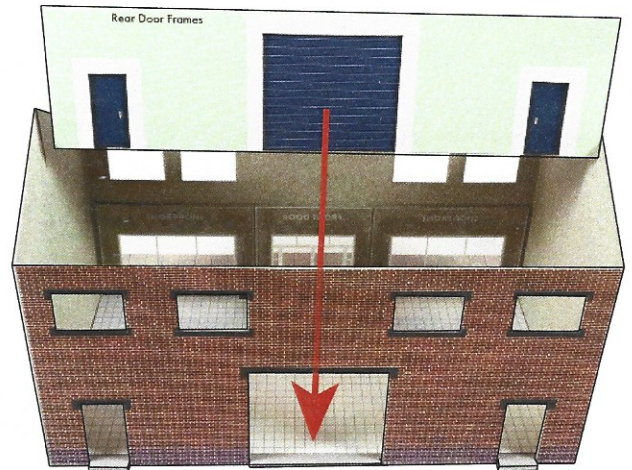
Add the Front shop door/window frame. Carefully align the windows and door to the openings and flush to the base.



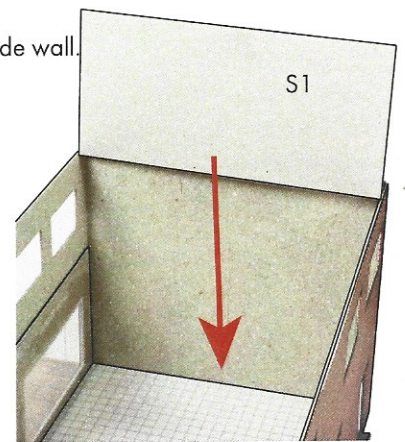
Now wrap the rear walls around the edge of the main base, test the fit first making sure the doorways fit over the corresponding doorsteps on the base.



Add the rear door frame. Carefully aligning doors to the openings and flush to the base.



Now add the two lower wall joiners (S1). Test the fit first, if a little tight then trim a little off the edge to fit snugly to the base joining the side walls. Repeat on the opposite side wall.



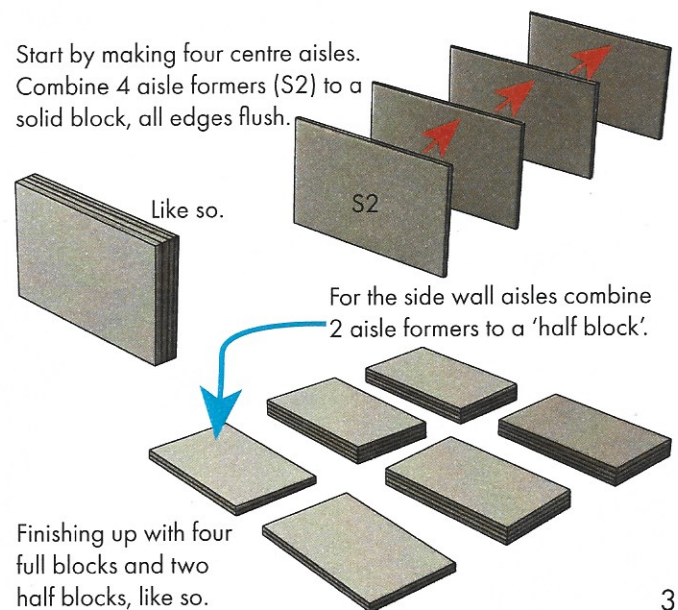
4 Aisle Displays

Now is the time to decide on what your unit will be selling and the layout of the aisles. Also if you want two separate shops or one large one.

In these instructions we'll be making one large supermarket, with aisles at right angles to the front windows.

Start by making four centre aisles.

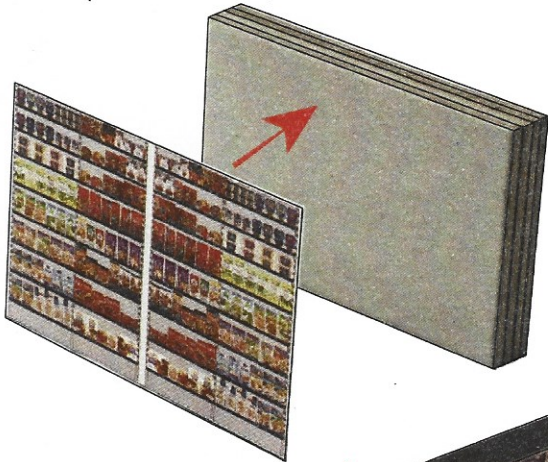
Combine 4 aisle formers (S2) to a solid block, all edges flush.



Finishing up with four full blocks and two half blocks, like so.

If you need extra displays you can download a copy of sheet D from www.metcalfe-models.com, find this product (PO361) and click the downloads tab.

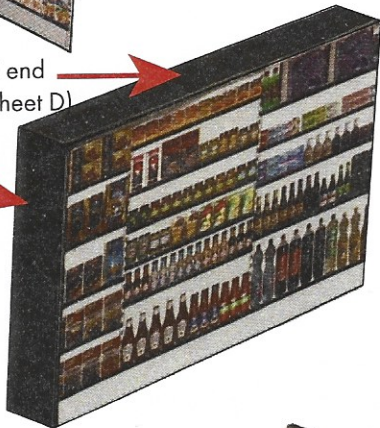
For the centre aisles add a display from Sheet D to either side, the side aisles just need a display on one side.



Then add an aisle top and end (the small black strips on sheet D)

You only need to add a black end to the viewable side.

Dab some paint along the exposed white edges.



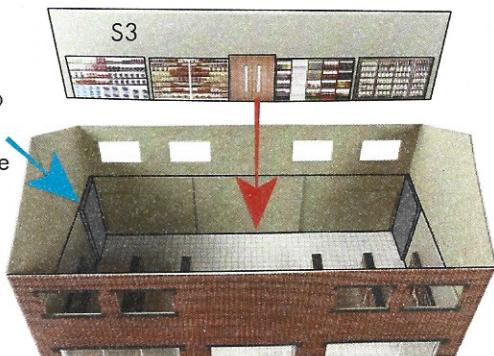
Like so.



Now arrange and glue in place the aisles. Use the grid pattern on the floor to space and align them.

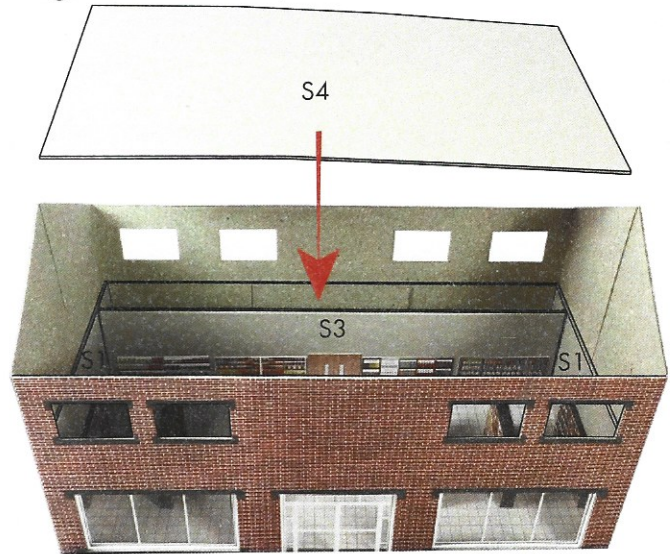
If you'd like a back wall, add some displays to the Internal wall (S3) Test the fit, trim if needed and glue into place.

Use some strips of waste card to brace the S3 so it's easier to glue into place.

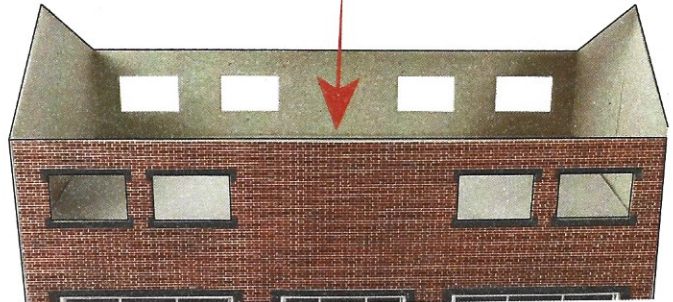
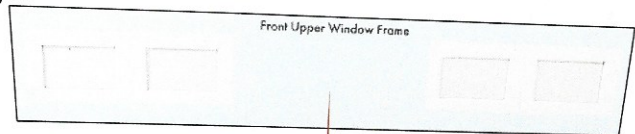


5 1st Floor

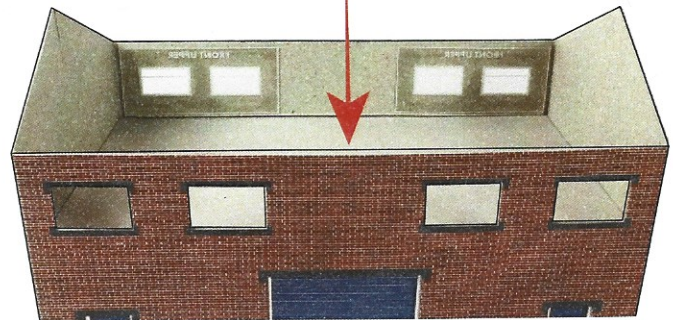
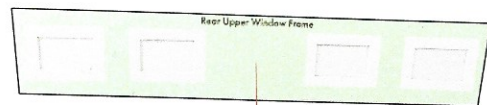
Add the S4 - 1st Floor. Gently tap it down until it rests atop the window/door frames and the S1 and S3 strengtheners. It doesn't need to be glued in place as the upper frames and strengtheners will hold it in place once added.

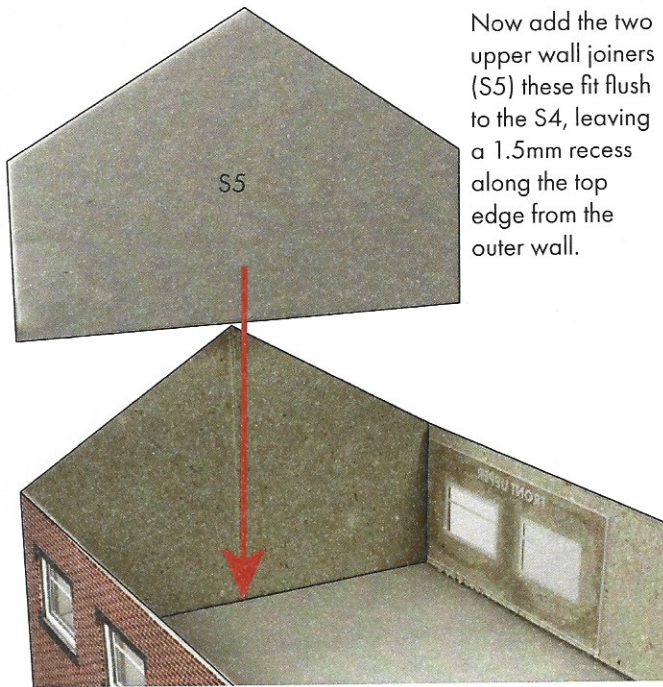


Next add the front window frame, carefully aligning the windows through the openings. Hold or clamp in place while the glue sets.

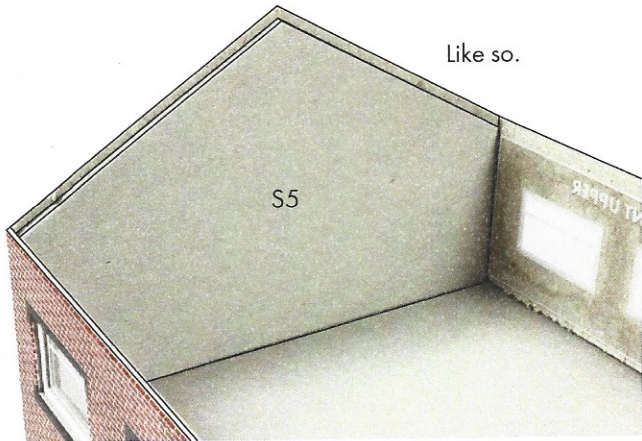


Same with the rear window frame, carefully aligning the windows through the openings. Hold or clamp in place while the glue sets.





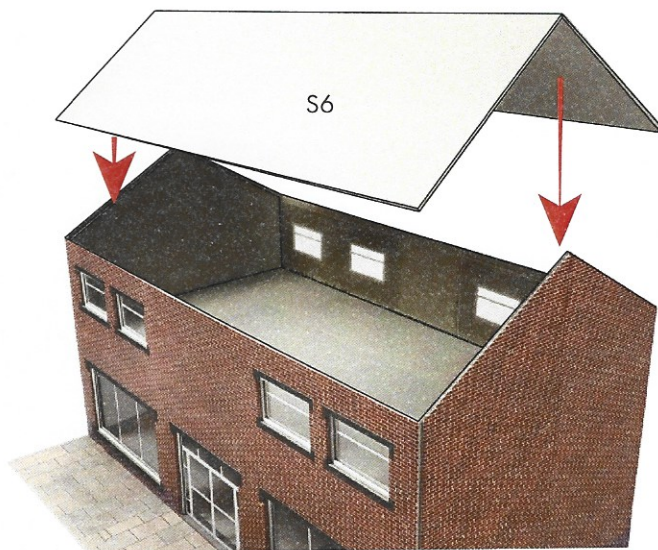
Now add the two upper wall joiners (S5) these fit flush to the S4, leaving a 1.5mm recess along the top edge from the outer wall.



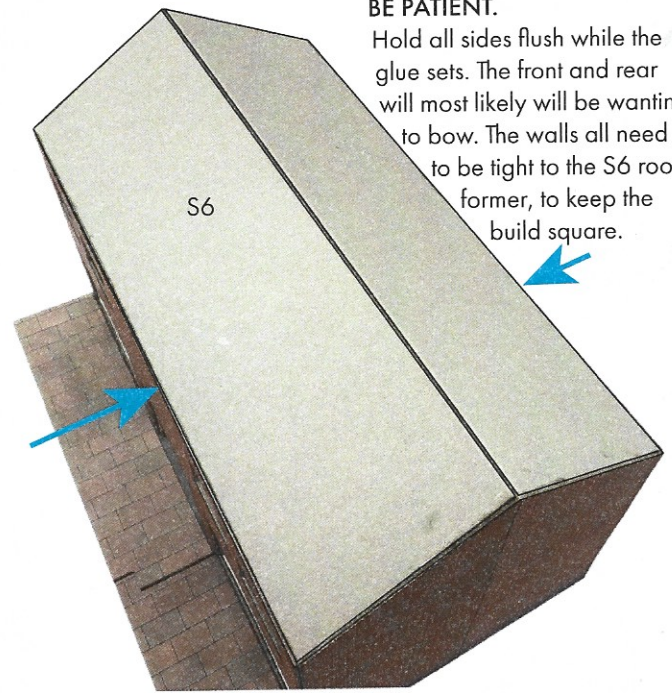
Like so.

6 Main Roof

Test the fit first, you'll see that the roof former (S6) fits flush into the recess and atop the S5 wall joiners. Also fits flush on top of the upper window frames inside the outer walls.



After you've tested the fit apply glue along the top edges of the inner window frames and S5's.



BE PATIENT.

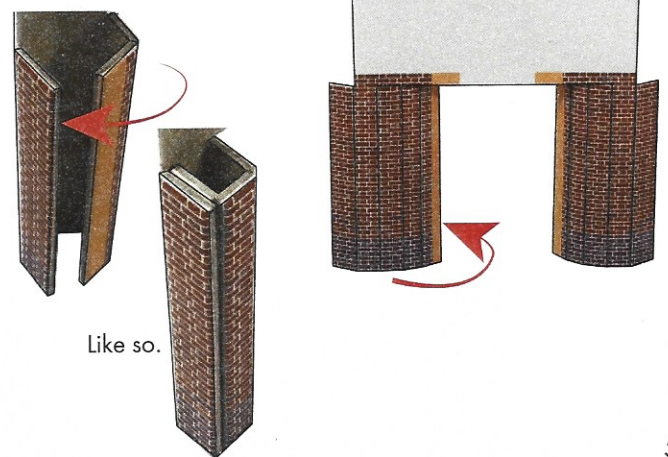
Hold all sides flush while the glue sets. The front and rear will most likely will be wanting to bow. The walls all need to be tight to the S6 roof former, to keep the build square.

Now add the main roof. The little cut away section needs to be at the front. The sides flush with the end walls.



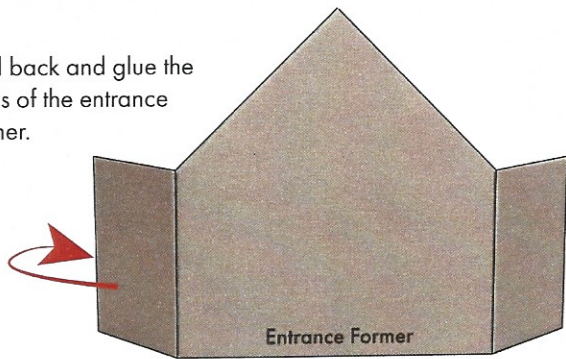
7 Front Entrance

Start by folding the pillars around, apply glue to the orange edge, this then glues to the back of the outside edge.

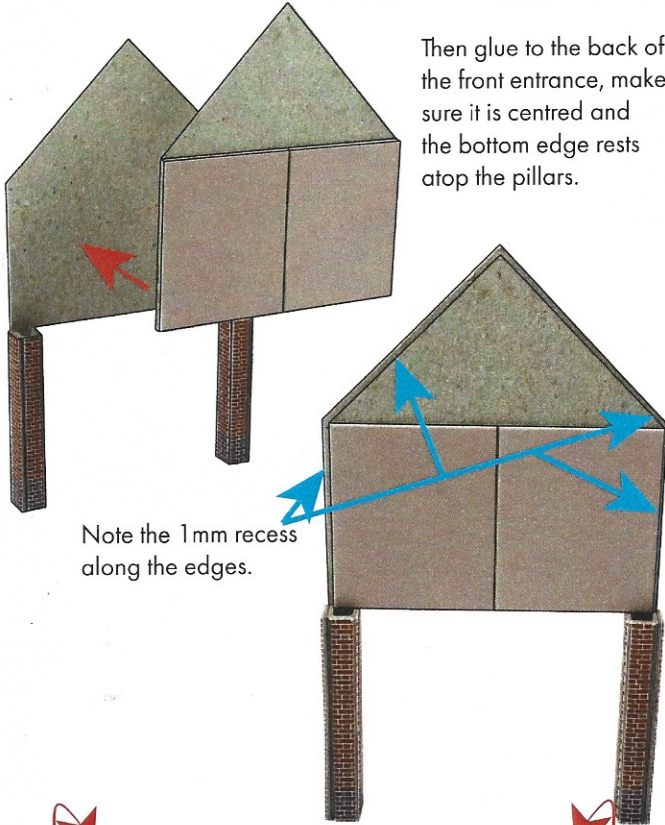


Like so.

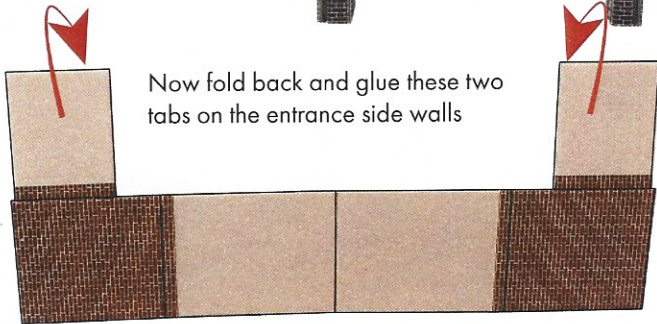
Fold back and glue the sides of the entrance former.



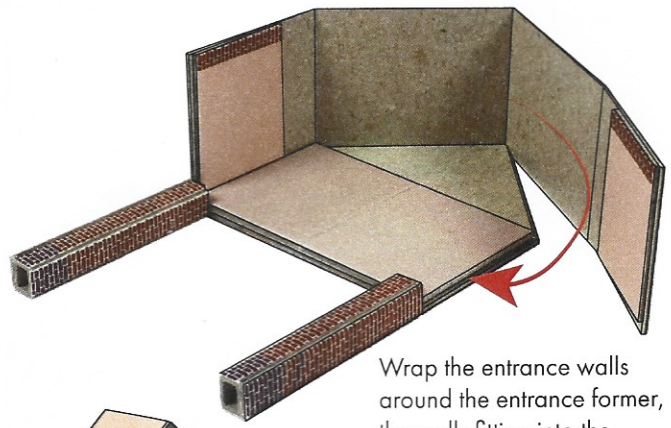
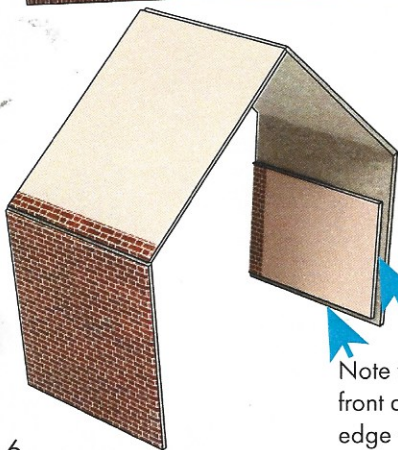
Then glue to the back of the front entrance, make sure it is centred and the bottom edge rests atop the pillars.



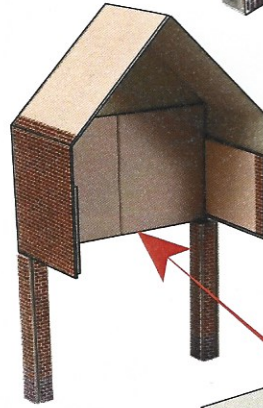
Now fold back and glue these two tabs on the entrance side walls



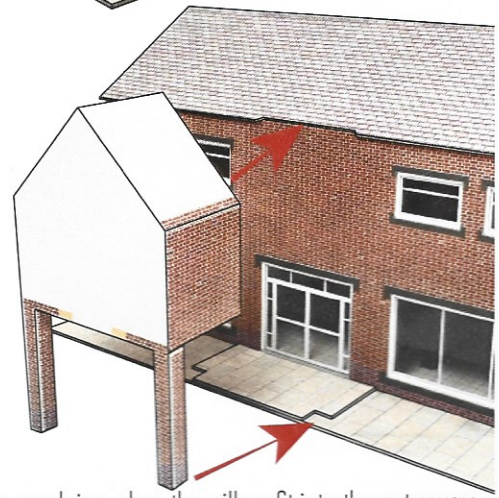
Note the 1mm recess from the front and bottom edge. This edge fits to the entrance.



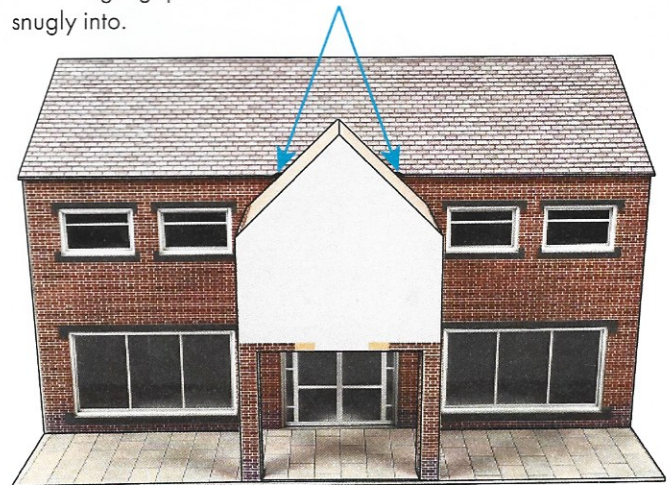
Wrap the entrance walls around the entrance former, the walls fitting into the 1mm recess and flush with the outer edge.



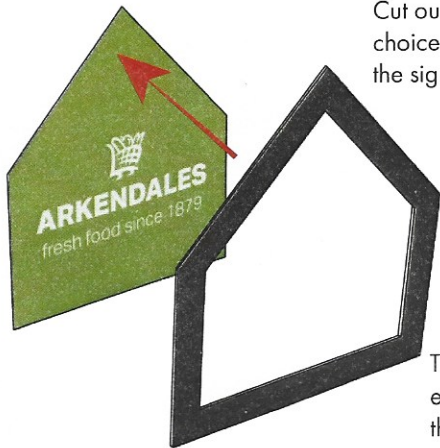
Now add the entrance base (S7) into the underside recess of the wall tabs and flight up to the front, keeping all rear edges flush.



Test the fit before applying glue, the pillars fit into the cut away sections on the base, the walls flush to the building. Make sure the little cut away section of the main roof is centred with a slight gap on each side for the entrance roof to slot snugly into.



Fit the entrance roof, flush to the front wall and main roof.



Cut out a main sign of your choice and fit to the back of the sign frame.

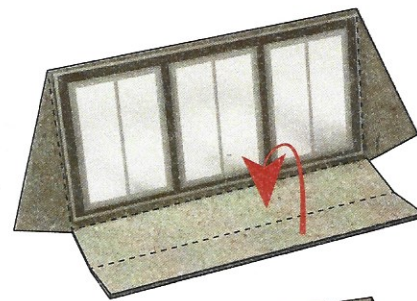
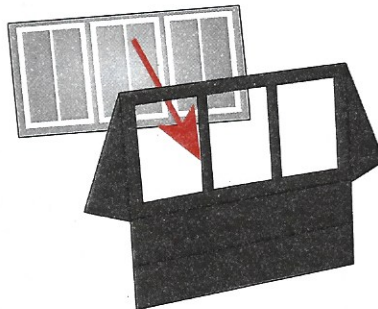
Then fit flush to the entrance front, keeping the edges flush.



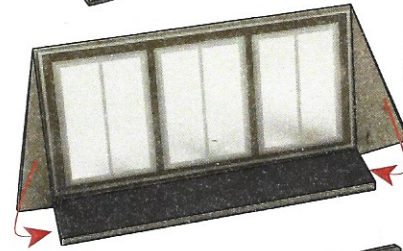
Lastly fit the bargeboard, push up tight to the underside of the roof overhang.

8 Canopies

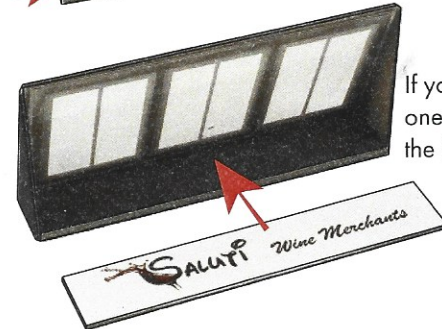
Using very small spots of glue, align the canopy glazing to the canopy frame. The matt white window borders fitting flush with the openings.



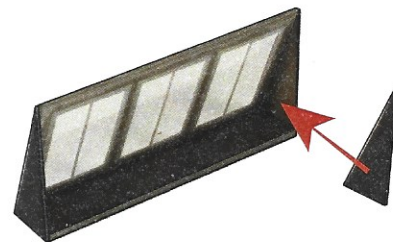
Fold back and glue the rear tab to create double thickness.



Fold and fix the sides to the tab.



If you want a sign, add one now, fit flush over the black tab.



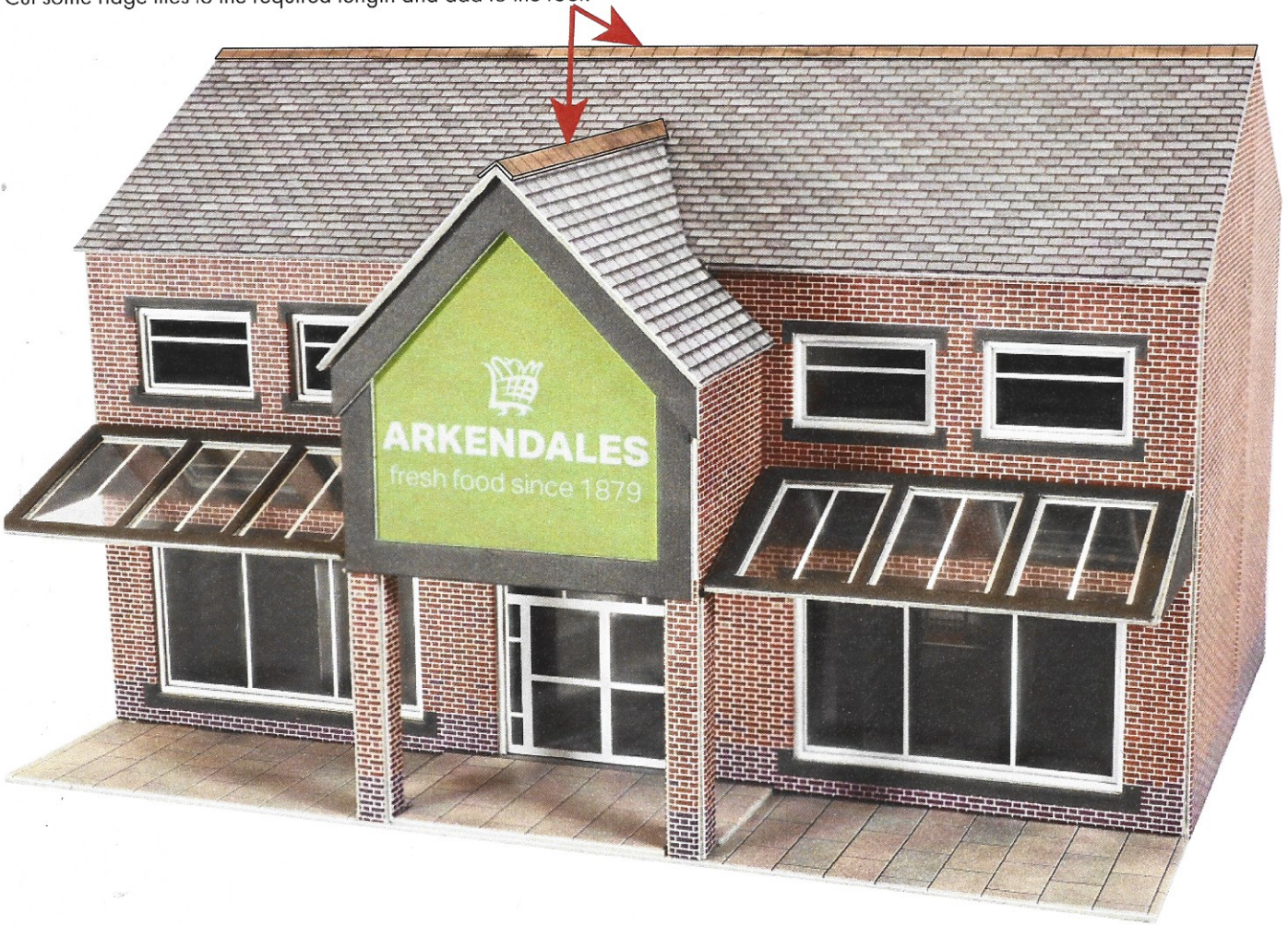
Now the two inner canopy supports, one to each side.



Use the canopy spacer (S8) to help position the canopy and glue into place. Be careful not to accidentally glue the S8 to the build! Repeat on the opposite side.

9 Finishing Touches

Cut some ridge tiles to the required length and add to the roof.



When combining two kits together use a spare aisle top to cover the gap between canopies.

