

## T-2 Buckeye "Camouflaged Trainer"

GB

North American T-2 Buckeye was the first US Navy jet trainer aircraft since 1959 when it entered service until 2004 when it was withdrawn from pilots' training program. It was ordered by US Navy in 1956 as intermediate trainer for training conversion from T-28 Trojans. It served for jet powered aircraft familiarization prior conversion to combat aircraft. The first prototype YT-2J-1 took off on January 1, 1958. The first version T2J-1 was powered by single J34-WE-48 jet engine. 201 machines of this version were produced and since 1962 when new designation system was introduced the aircraft was re-designated to T-2A. For better safety US Navy demanded the aircraft to be powered by two jet engines. Therefore North American designed and introduced T-2B version powered by two J60-P-4 jet engines. 97 machines of this version were produced and then the production switched to T-2C version powered by two J85-GE-4 jet engines. T-2C was produced in 231 pieces. The combat name common to all versions was Buckeye - Ohio chestnut tree. T-2s were produced in Columbus Ohio and the buckeye is the Ohio's state tree. At the end of its career some US Navy machines were converted for target towing and re-designated DT-2B or DT-2C. Except of the fact that T-2s served for training almost half a century they were also exported. T-2D was purchased by Venezuelan Air Force; T-2E still serves with Greek Air Force. Several T-2s are in private hands in USA.

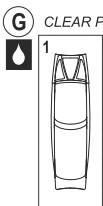
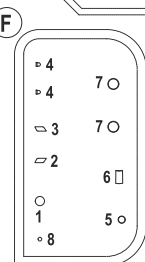
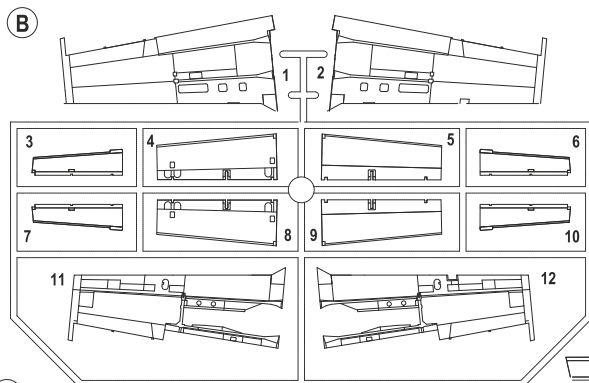
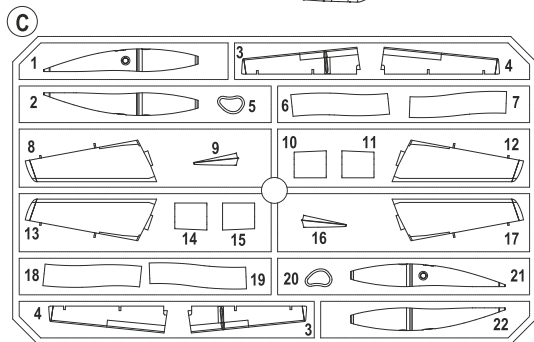
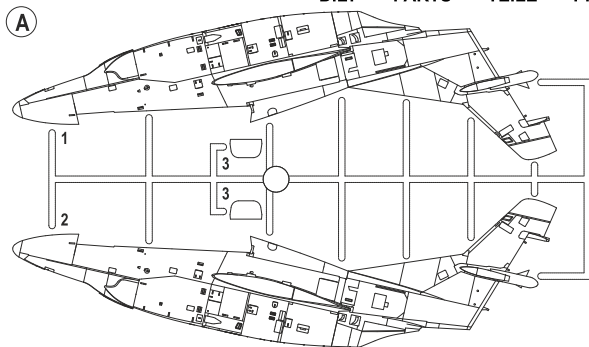
Wingspan: 11.6 m, Length: 11.8 m, Max. Speed at sea level: 862 Km/h, Range: 1,723 km, Service Ceiling: 13,045 m.

CZ

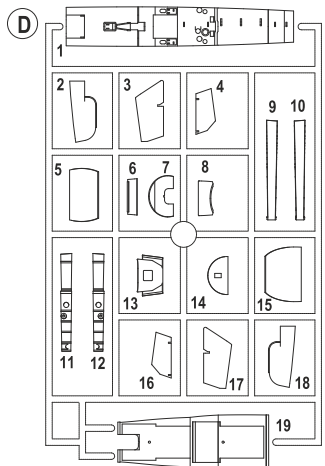
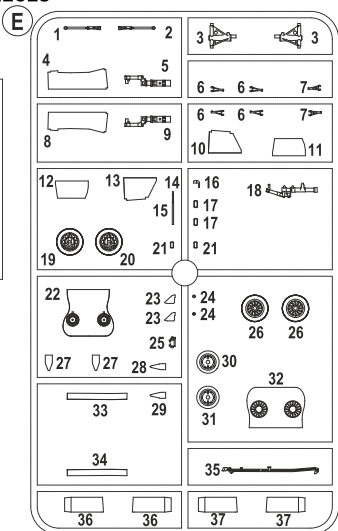
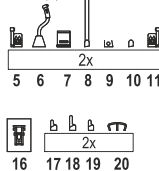
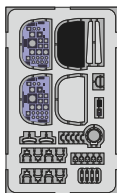
Od roku 1959 kdy vstoupil do služby až do roku 2004, kdy byl North American T-2 Buckeye vyřazen z výcvikového programu byl prvním proudovým strojem námořnictva USA, na kterém létali do výcviku zařazení letci. US Navy objednalo tento letoun v roce 1956, s tím, že v rámci několikastupňového výcviku bude zařazen za vrtulový T-28 Trojan. Sloužil k seznámení s proudovou technikou před přechodem na bojové stroje. První prototyp označený YT-2J-1 vzlétl 31. 1. 1958. První verze T2J-1 byla jednomotorová. Poháněl ji motor J34-WE-48. Této verze bylo postaveno 201 kusů, od roku 1962 byla v novém systému označování přeznačena na T-2A. US Navy požadovalo úpravu na dvoumotorový stroj s větší bezpečností. Proto North American připravil a zavedl do výroby verzi T-2B se dvěma motory J60-P-4. Postaveno bylo 97 kusů, po té výroba přešla na verzi T-2C s motory J85-GE-4. Té bylo postaveno 231 kusů. Bojové jméno společně pro všechny verze bylo Buckeye - Jírovec neboli Kaštan. T-2 Byly vyráběny v Columbusu v Ohiu a Jíroven je státním stromem státu Ohio. Na konci své služby u US Navy byla část strojů upravena na terčové a označena DT-2B nebo DT-2C. Kromě toho, že T-2 sloužily skoro padesát let k výcviku letců US Navy, byly také exportovány. Verzi označovanou T-2D odebralo letectvo Venezuely, T-2E složí v Řeckém vojenském letectvu. V USA nyní létá několik T-2 jako soukromé jety.

rozpětí: 11,6 m, délka: 11,8 m, max. rychlost v úrovni moře: 862 km/h, dolet: 1723 km, dostup: 13 045 m

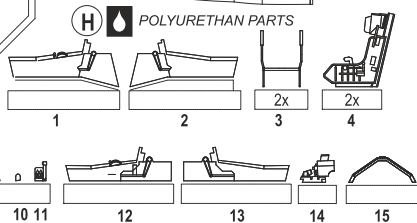
DÍLY - PARTS - TEILE - PIÉCES



CLEAR PART PHOTO-ETCHED PARTS (L)



POLYURETHAN PARTS



# SYMBOLS

**?** MOŽNOST VOLBY  
OPTIONAL  
NACH BELIEBEN  
OPTION

**🔑** POUŽIT KYANOAKRYLÁTOVÉ LEPIDLO  
INSTANT CYANOACRYLATE GLUE  
ZYANOAKRYLÁTKLEBER  
ADHESIF CYANOACRYLAT

**↶↷** OHNOUT  
BEND  
BIEGEN  
COURBER

**👉** ZHOTOVIT NOVÉ  
SCRATCH BUILD  
FERTIGSTELLEN  
ACHEVER

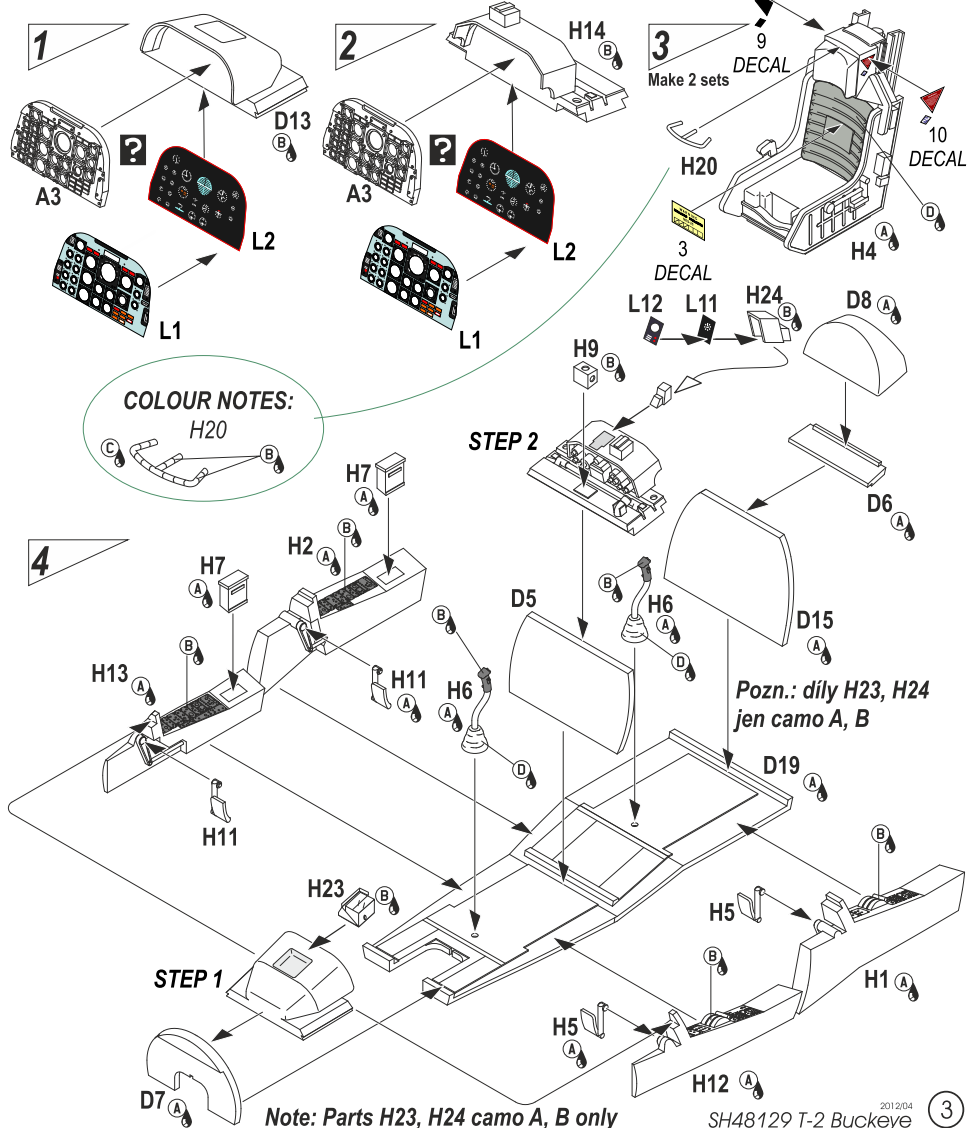
**⚡** REZAT/VRTAT  
CUT OFF/DRILL  
ENTFERNEN  
DETACHER

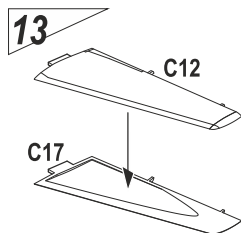
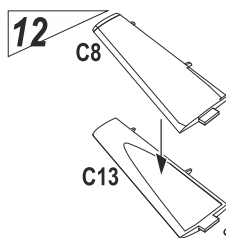
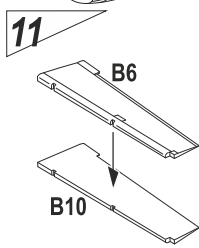
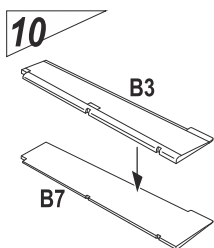
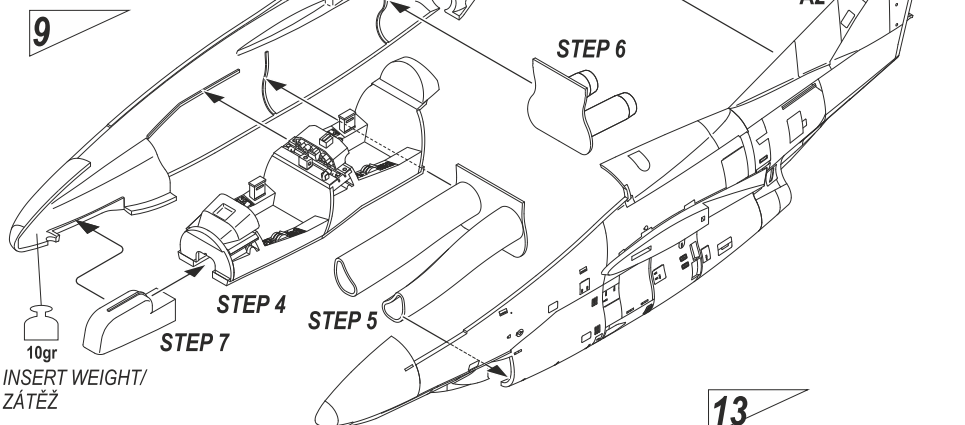
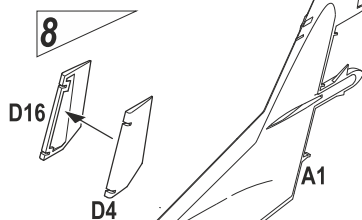
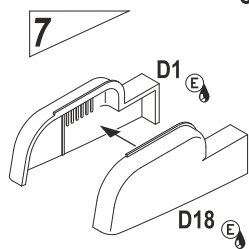
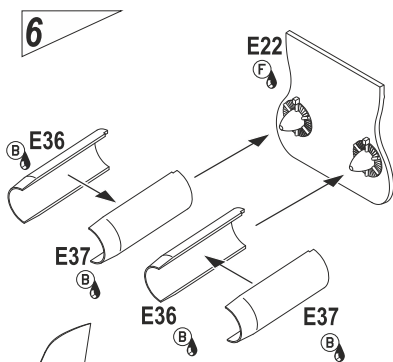
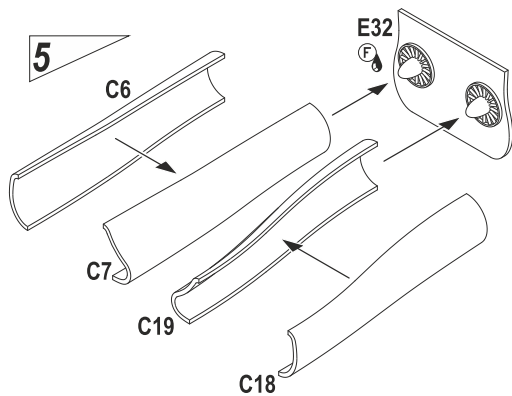
**🎨** GSI **A** NATŘÍT  
COLOUR  
FARBEN  
PEINDRE  
colours code

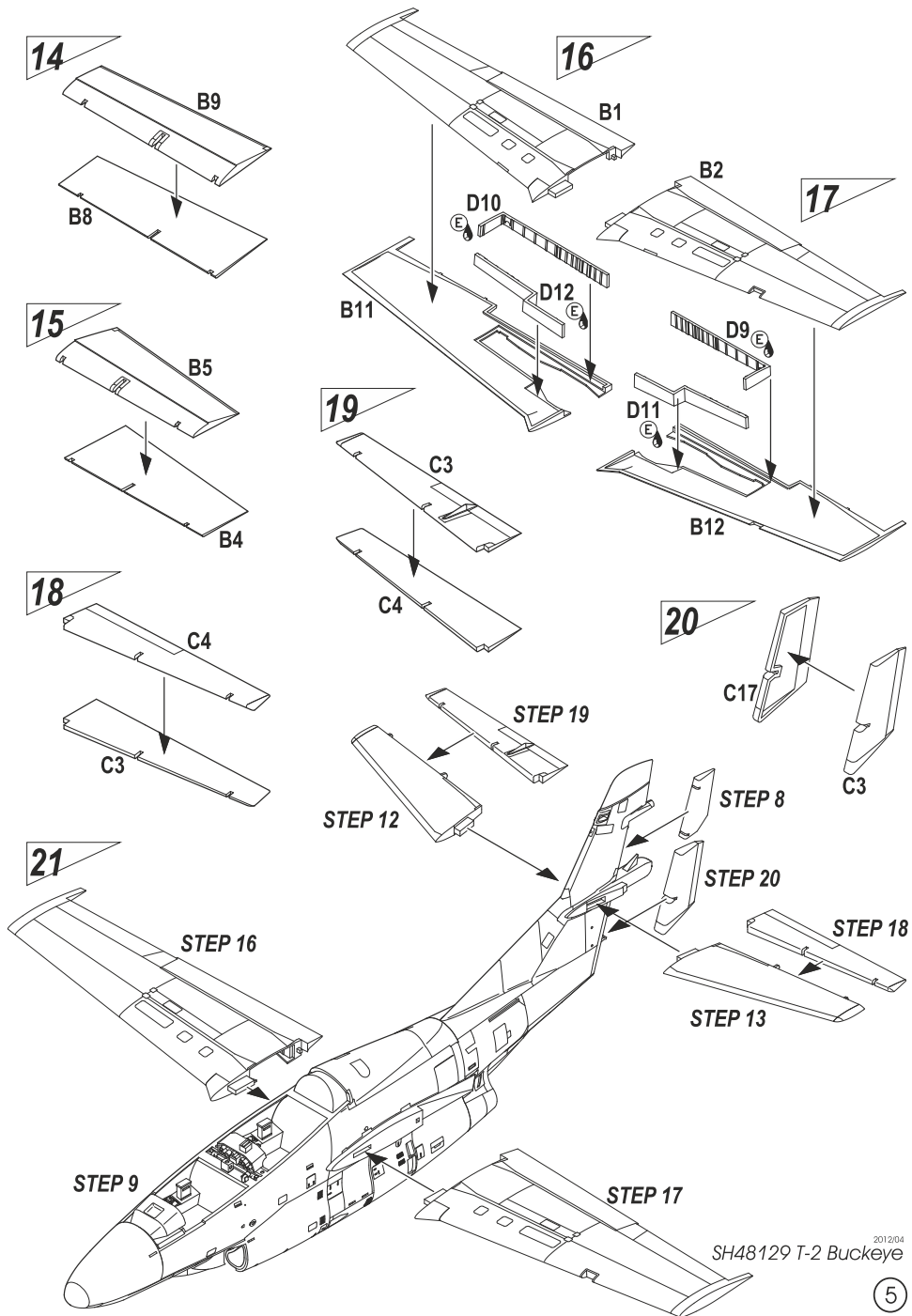
**Barvy GUNZE/ GUNZE Colour No.**

<b>A</b>	Světle šedá/ LIGHT GREY	H325/C325
<b>B</b>	Černá/ BLACK	H12/C33
<b>C</b>	Žlutá/ YELLOW	H4/C4
<b>D</b>	Šedozeleňá/ GREY-GREEN	H336/C336
<b>E</b>	Bílá/ WHITE	H1/C1
<b>F</b>	Ocelová/ STEEL	H18/C28
<b>G</b>	Barva pneu/ TIRE BLACK	H77/C137
<b>H</b>	Chromová stříbrná/ CHROM SILVER	MC211

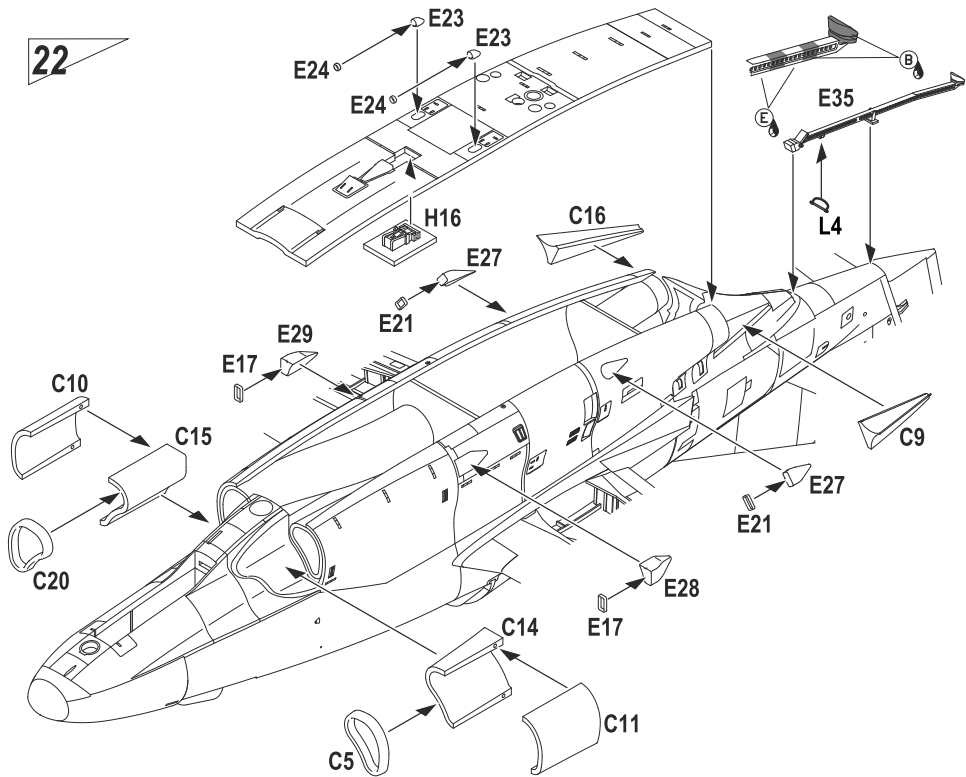
## SESTAVA - ASSEMBLY - BAUANLEITUNG - ASSEMBLAGE



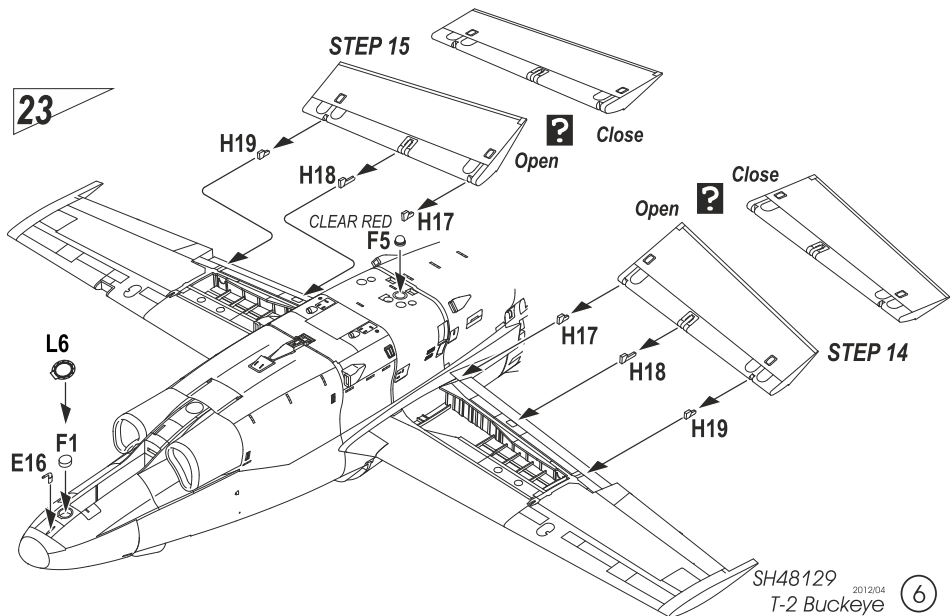


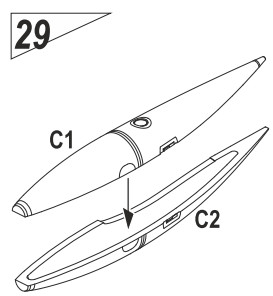
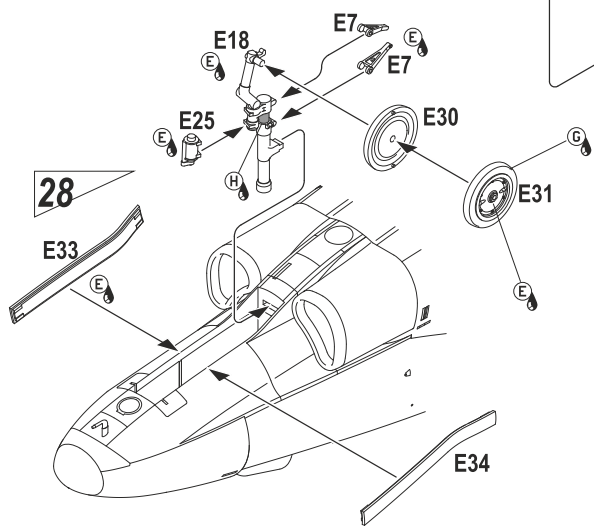
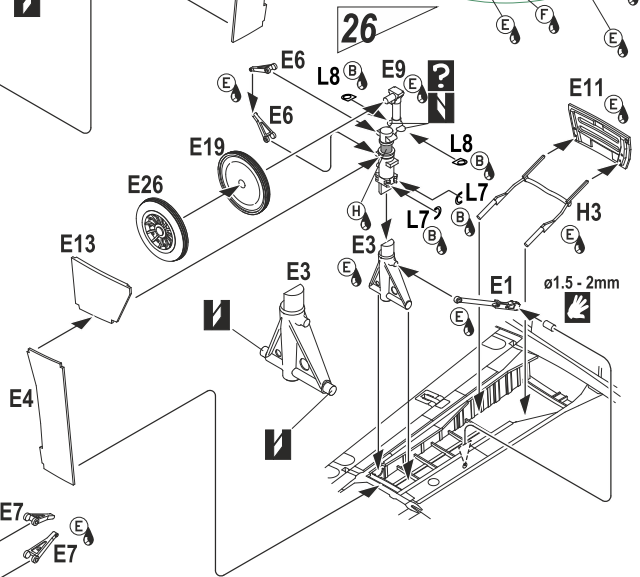
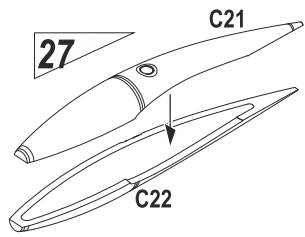
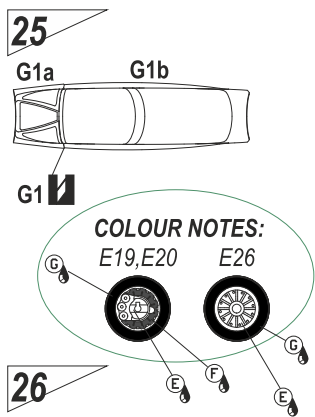
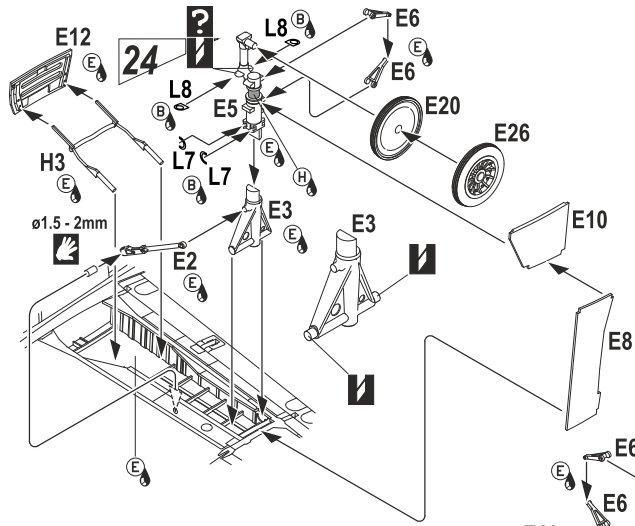


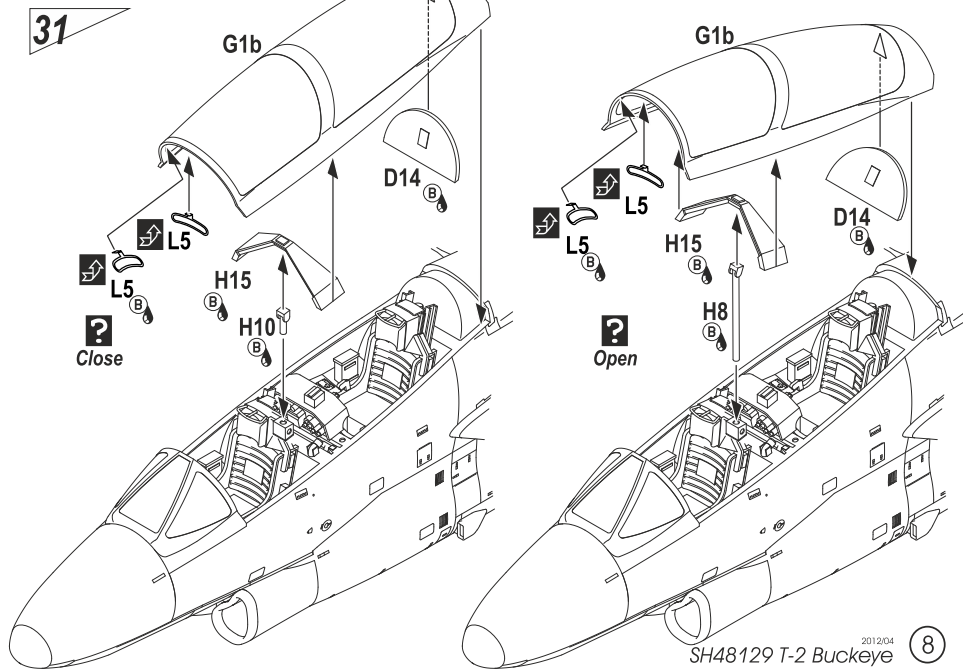
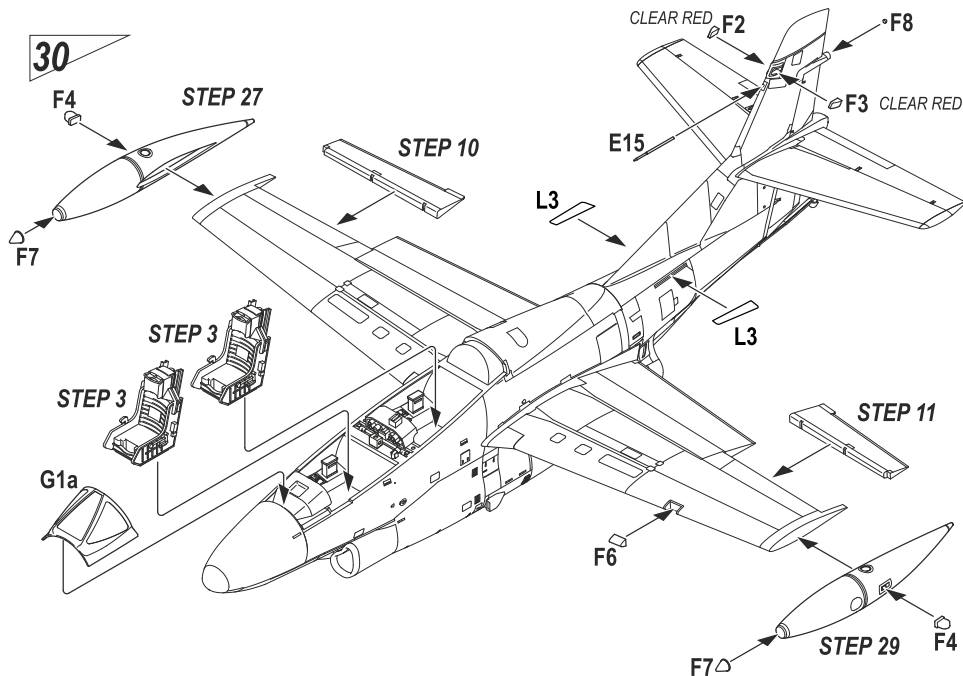
22



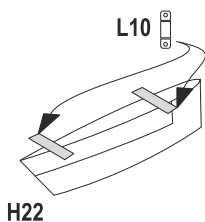
23



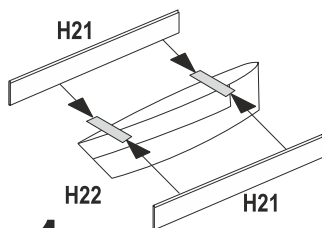




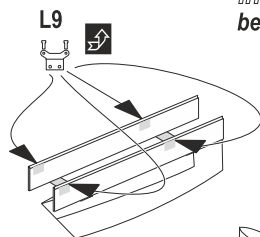


**31***Info view*

*Hlavami nýtů dolů.  
Rivets Heading Down.*

**32****2x**

*Note/Pozn.:*  
*Steps 31-33 camo B only.*  
*Kroky 31-33 jen camo B.*

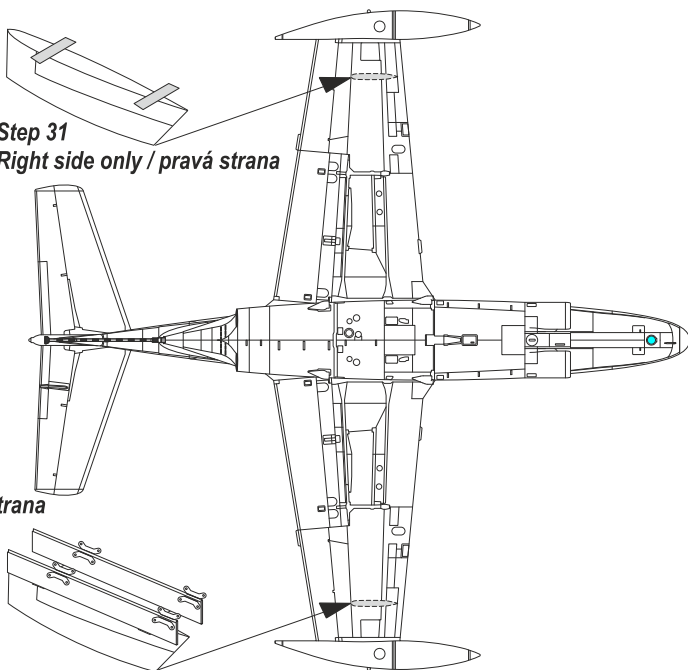
**1x****33**

*Info view*  
*bend 8pcs*

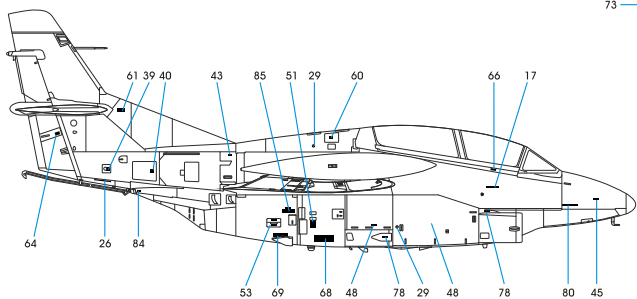
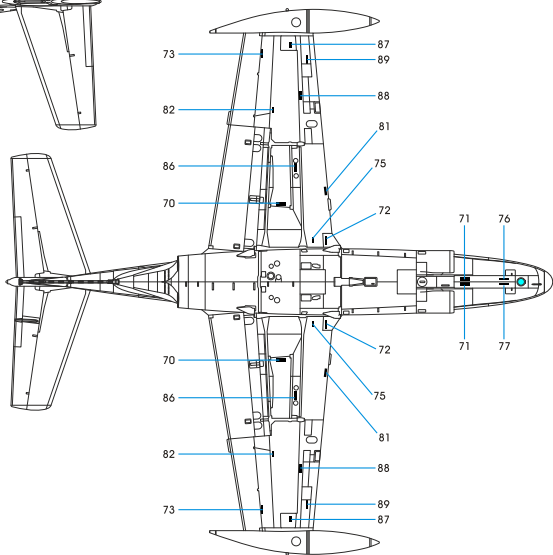
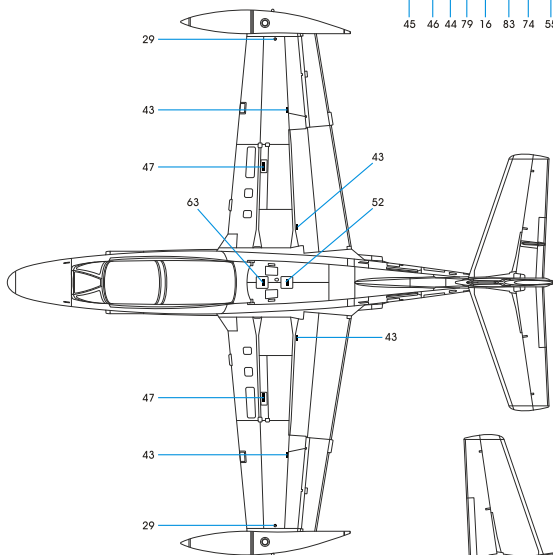
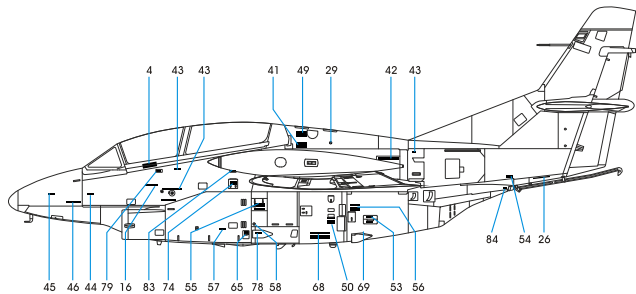


**Step 31**  
*Right side only / pravá strana*

**Step 33**  
*Left side only / levá strana*



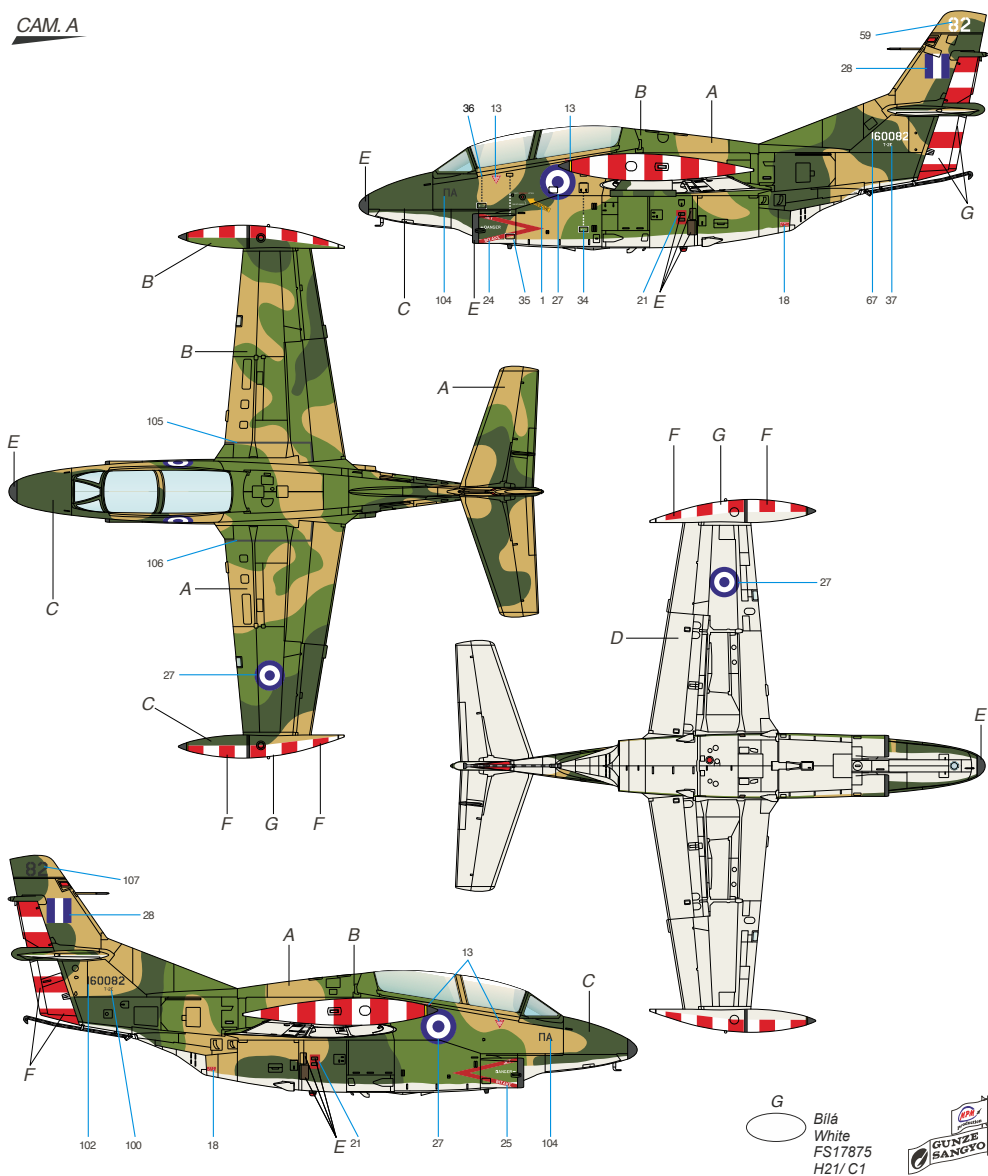
POPISKY PRO KAMUFLÁŽE A a B  
 STENCILS CAMO A & B



T-2E, Bu. No. 160082, 362 MEA "Nestor", základna Kalamata, Řecké vojenské letectvo, 2007. Letoun byl vybaven minimálně jedním podkřídlním závěsníkem s adaptérem.

T-2E, Bu. No. 160082, 362 MEA "Nestor", Kalamata airbase, Greek Air Force, 2007. This aircraft was equipped with at least one wing pylon with adaptor.

CAM. A



- |  |   |   |  |  |  |
|--|---|---|--|--|--|
| <p><b>A</b> <b>Tříslová</b><br/>Tan<br/>FS30219<br/>H310/ C310</p> | <p><b>B</b> <b>Středně zelená</b><br/>Medium Green<br/>FS34102<br/>H303/ C303</p> | <p><b>C</b> <b>Tmavě zelená</b><br/>Dark Green<br/>FS34079<br/>H309/ C309</p> | <p><b>D</b> <b>Světlé šedá</b><br/>Light Grey<br/>FS36622<br/>H311/ C311</p> | <p><b>E</b> <b>Matná černá</b><br/>Flat Black<br/>FS37038<br/>H12/ C33</p> | <p><b>F</b> <b>Červená</b><br/>Signal Red<br/>FS12197<br/>H340/ C340</p> |
|--|---|---|--|--|--|

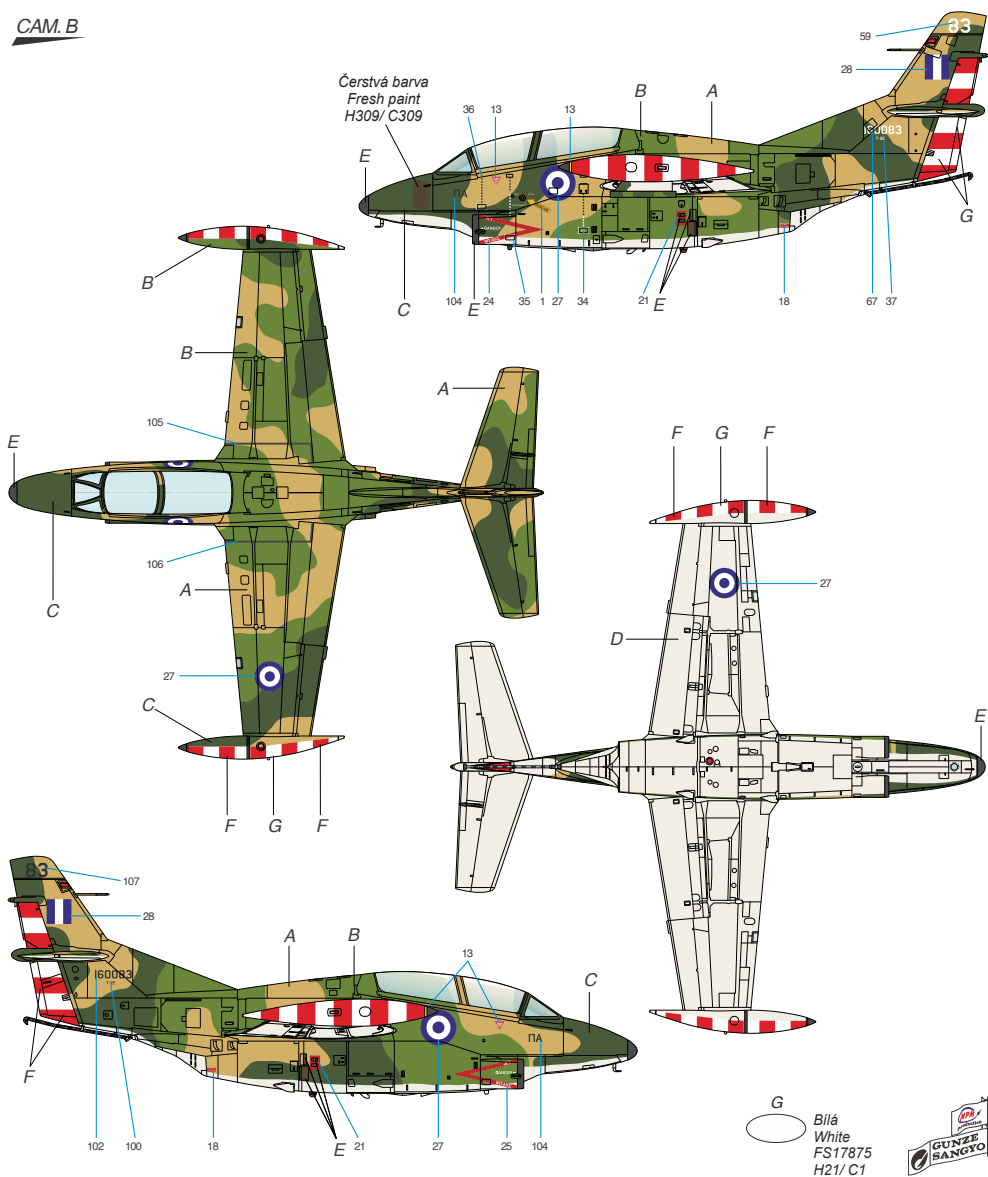
**G** **Bílá**  
White  
FS17875  
H21/ C1



T-2E, Bu. No. 160083, 362 MEA "Nestor", základna Kalamata, Řecké vojenské letectvo, 2007. Letoun byl vybaven minimálně jedním podřídelným závěsníkem s adaptérem.

T-2E, Bu. No. 160083, 362 MEA "Nestor", Kalamata airbase, Greek Air Force, 2007. This aircraft was equipped with at least one wing pylon with adaptor.

CAM. B

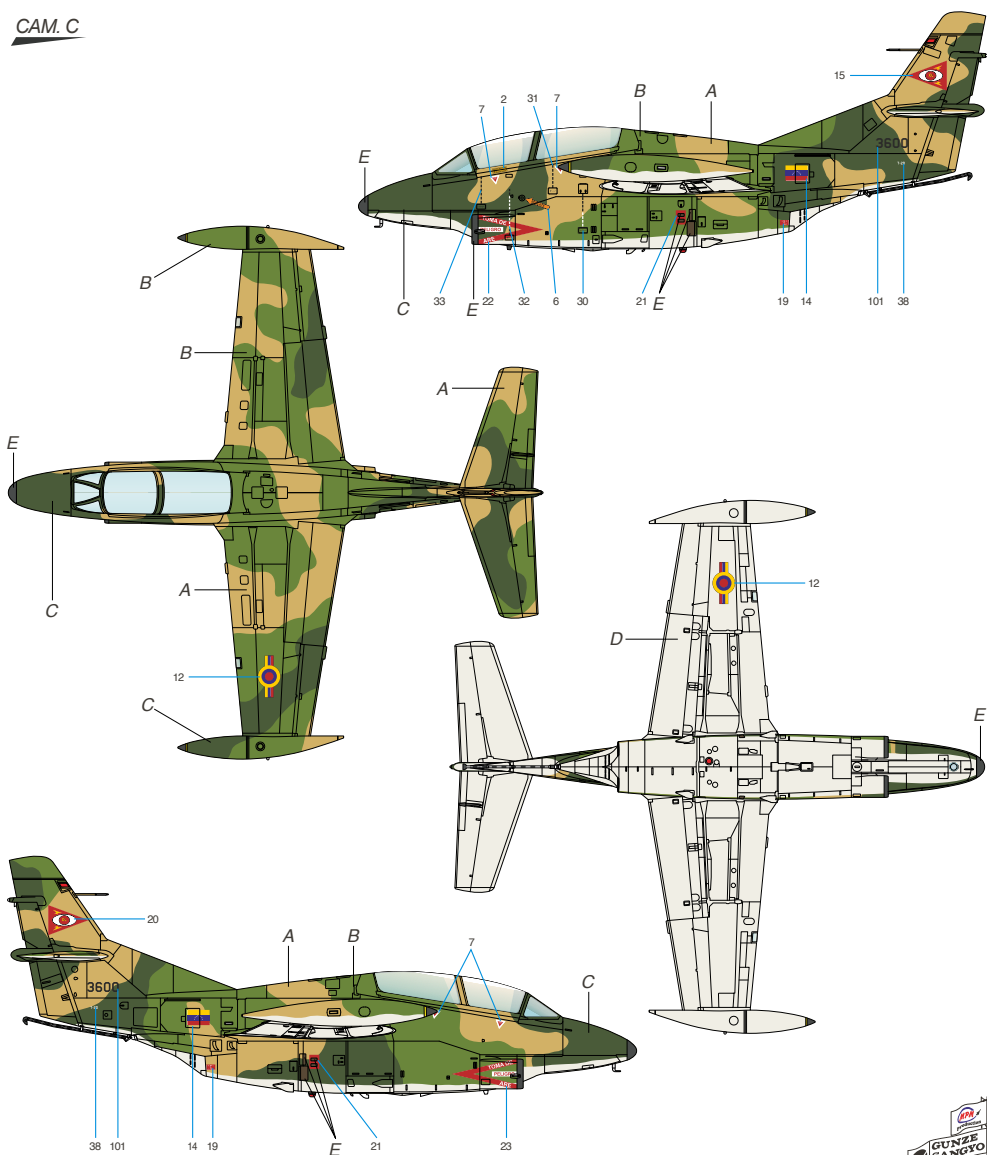







- |  |   |   |  |  |  |
|--|---|---|--|--|--|
| <b>A</b>                                 | <b>B</b>  | <b>C</b>  | <b>D</b>   | <b>E</b>   | <b>F</b>                                       |
| Tříšlová<br>Tan<br>FS30219<br>H310/ C310 | Středně zelená<br>Medium Green<br>FS34102<br>H303/ C303 | Tmavě zelená<br>Dark Green<br>FS34079<br>H309/ C309 | Světlé šedá<br>Light Grey<br>FS36622<br>H311/ C311 | Matná černá<br>Flat Black<br>FS37038<br>H12/ C33 | Červená<br>Signal Red<br>FS12197<br>H340/ C340 |

T-2D, No .3600, Venezuelské letectvo. Letoun byl určen k plnění  
 bitevních úkolů.

T-2D, No .3600, Venezuelan Air Force. This machine flew mainly  
 strike missions

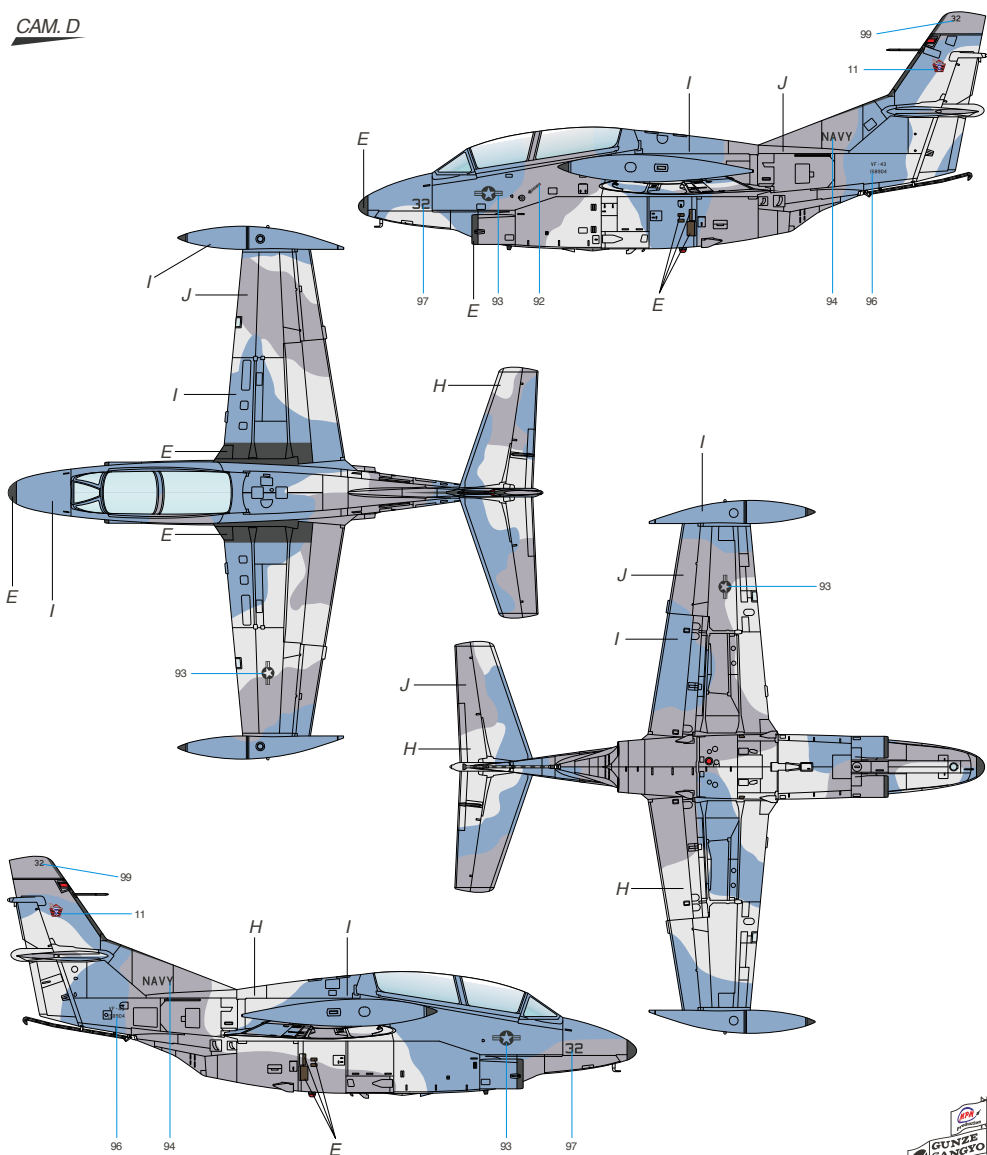
**CAM. C**



- |  |   |  |  |  |
|--|---|--|--|--|
| <p><b>S</b></p> <p> Tříslová<br/>Tan<br/>FS30219<br/>H310/ C310</p> | <p><b>%</b></p> <p> Středně zelená<br/>Medium Green<br/>FS34102<br/>H303/ C303</p> | <p><b>&amp;</b></p> <p> Tmavě zelená<br/>Dark Green<br/>FS34079<br/>H309 / C309</p> | <p><b>'</b></p> <p> Světle šedá<br/>Light Grey<br/>FS36622<br/>H311/ C311</p> | <p><b>(</b></p> <p> Matná černá<br/>Flat Black<br/>FS37038<br/>H12/ C33</p> |
|--|---|--|--|--|



**CAM. D**

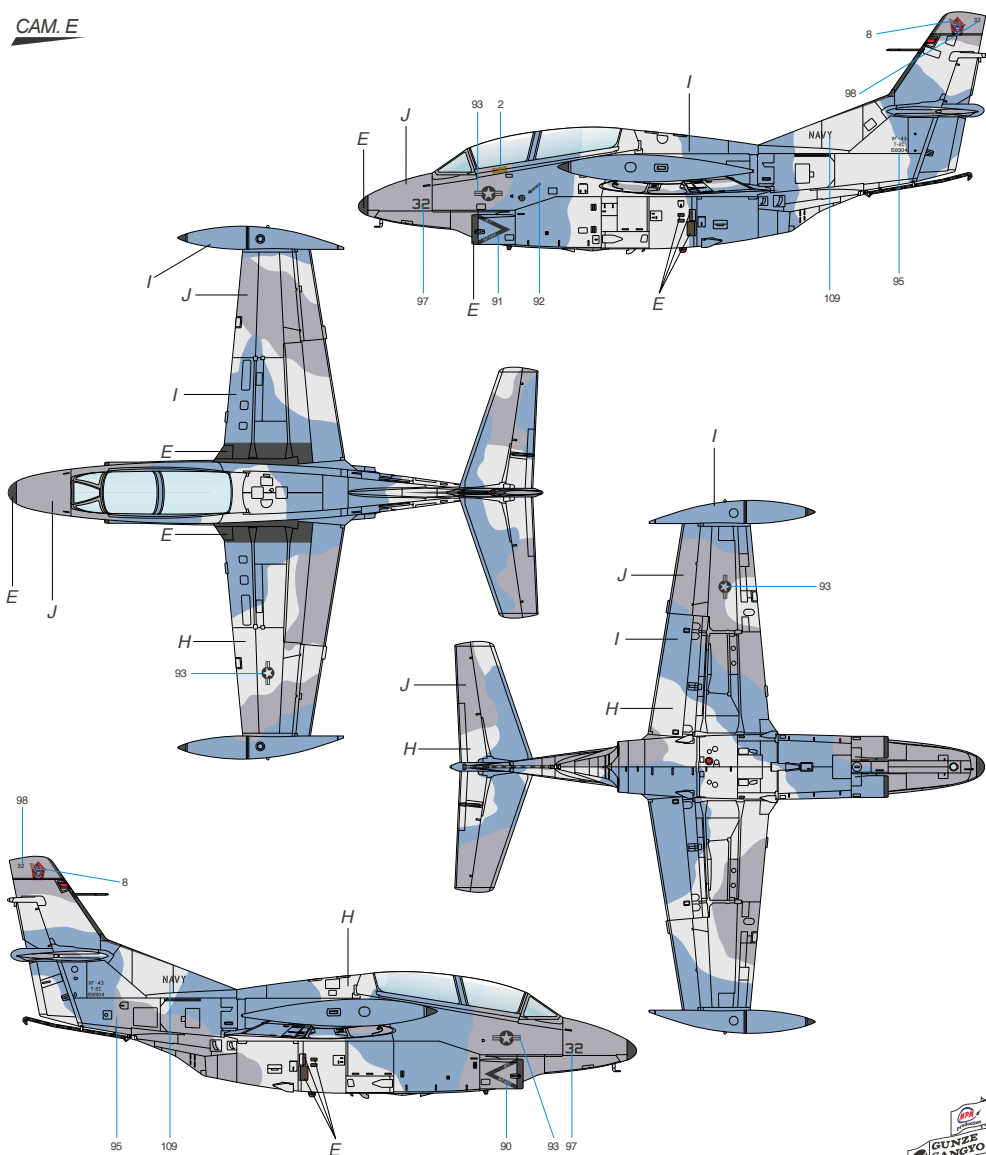


- |   |  |  |  |
|---|--|--|--|
| <b>E</b>  | <b>H</b>   | <b>I</b>   | <b>J</b>   |
| Matná černá<br>Flat Black<br>FS37038<br>H12 / C33 | Raččí sedá<br>Gull Grey<br>FS36440<br>H315/ C315 | Přechodová modrá<br>Intermediate Blue<br>FS35164<br>C366 | Tmavá raččí sedá<br>Dark Gull Grey<br>FS36231<br>H317 / C317 |

T-2C, Bu. No. 158904, VT-43 Challengers - NAS Oceana "Aggressors", No.32, US Navy, 1986. Pozdější provedení kamufláže stejného stroje.

T-2C, Bu. No. 158904, VT-43 Challengers - NAS Oceana "Aggressors", No.32, US Navy, 1986. Later camouflage scheme of the same machine.

**CAM. E**



- |   |  |  |  |
|---|--|--|--|
| <b>E</b>  | <b>H</b>   | <b>I</b>   | <b>J</b>   |
| Matná černá<br>Flat Black<br>FS37038<br>H12 / C33 | Raččí sedá<br>Gull Grey<br>FS36440<br>H315/ C315 | Přechodová modrá<br>Intermediate Blue<br>FS35164<br>C366 | Tmavá raččí sedá<br>Dark Gull Grey<br>FS36231<br>H317 / C317 |