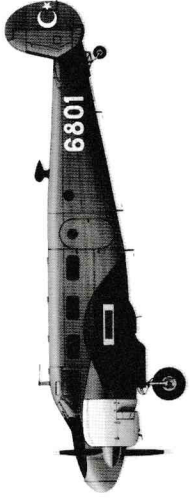


PM
MODEL
PM-306



BEECHCRAFT D-18S

MODEL KİT \ MODELLE REDUIT \ MODEL BAUSATZ
1\72 ÖLÇEK \ SCALE \ MASSTAB \ ECHELLE

C-45 Expeditor, yedi kişilik nakliye uçağı, ABD Kara Kuvvetleri, ABD Donanması (JRB), İngiliz hava kuvvetleri ve birçok hava kuvvetleri tarafından hafif nakliye, fotoğraf keşif (F-2s) ve navigasyon eğitim uçağı olarak kullanıldı. C-45 II. Dünya savaşından sonra uzun süre boyunca hizmete devam etti ve 60'ların sonlarında bile bazıları hala ABD donanmasında (TC-45'ler) kullanılmıyordu.

TEKNİK ÖZELLİKLERİ:

Motor	: 2XPW R-985 Wasp yıldız
Tam yüklü ağırlık	: 3405 kg
Max. itis gücü	: 450 km
Maksimum sürat	: 360 km/h
Kanat genişliği	: 14.52 mt
Uçuş tavanı	: 8230mt
Gövde boyu	: 10.43 mt
Uçuş menzili	: 1931km
Yükseklik	: 2.84 mt
Silahlar	: -

The C-45 Expeditor seven seat transport was used by the U.S. Army Air Corps U.S. Nav. (JRB), RAF and many air forces as a light transport, photographic survey aircraft (F-2s) and navigation trainer.
C-45 served well beyond the Second World War and some were still in U.S. Navy service (TC-45s) well into the late 1960s.

SPECIFICATIONS :

Engine	: 2XPW R-985 Wasp
Loaded weight	: 7500 lb
Max. Power	: 450 hp
Max. speed	: 225 mph
Wing span	: 47 ft. 9. inch
Ceiling	: 25085 ft.
Length	: 34 ft. 4. inch
Range	: 1200 mls
Height	: 9 ft. 9. inch
Armament	: -

Die siebenstellige Transportmaschine C-45 wurde von den U.S. Army Streitkräften U.S. Navy (JRB), RAF und vielen ausländischen Luftstreitkräften als leichtes Transportflugzeug, Photoaufklärer (F-2s) und Navigationstrainer eingesetzt. Die C-45 trat während des zweiten Weltkrieges gute Dienste und viele wurden noch bis 1960 in Dienst gehalten.

TECHNISCHEN DATEN :

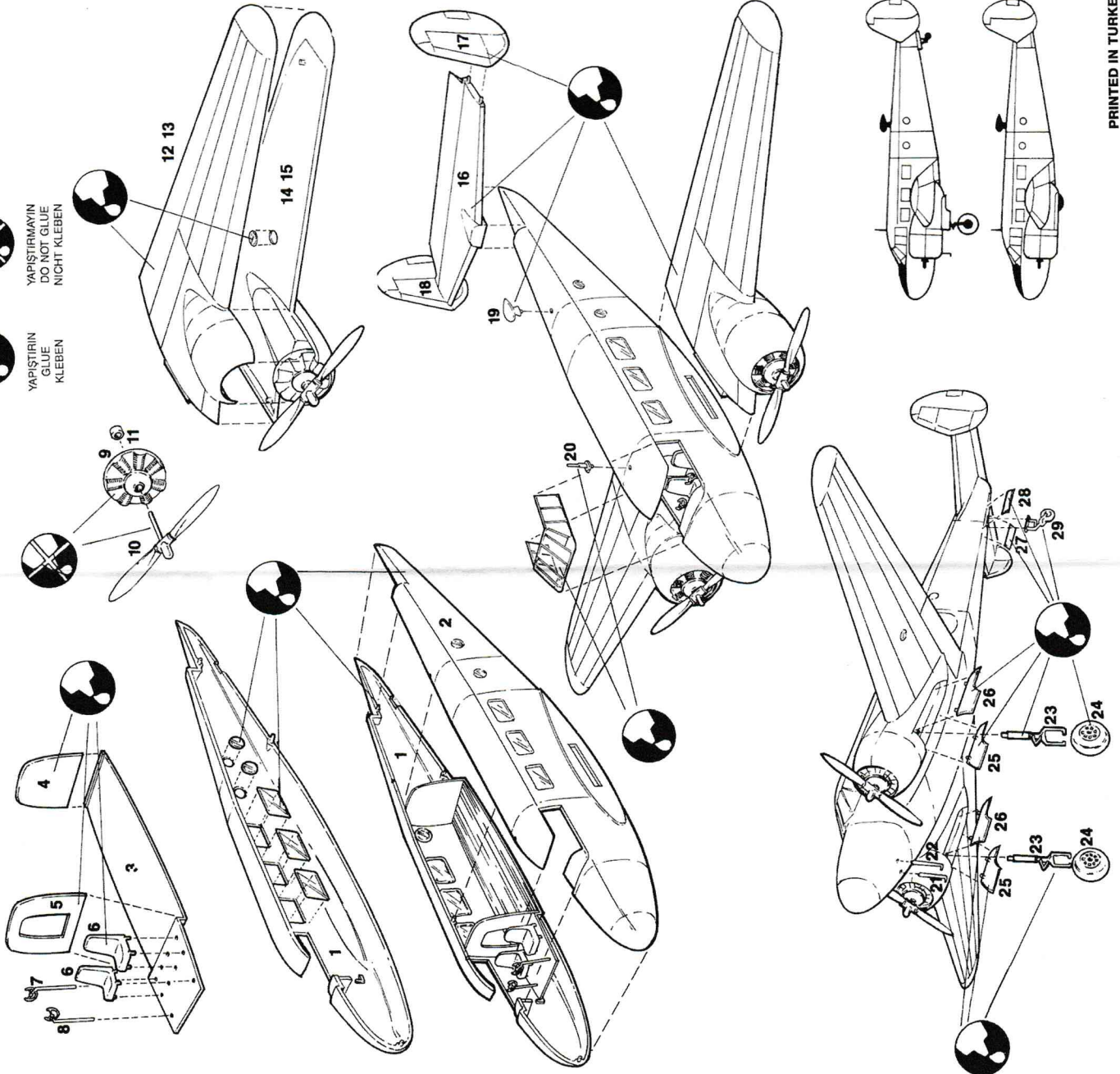
Triebwerk	: 2XPW R-985 Wasp
Abfluggewicht	: 3405 kg
Startschub	: 450 kp
Hochstgeschwindigkeit	: 360 km/h
Spannweite	: 14.52 m
Dienstgipfelhöhe	: 8230 m
Länge	: 10.43 m
Reichweite	: 1931 km
Höhe	: 2.84 m
Bewaffnung	: -



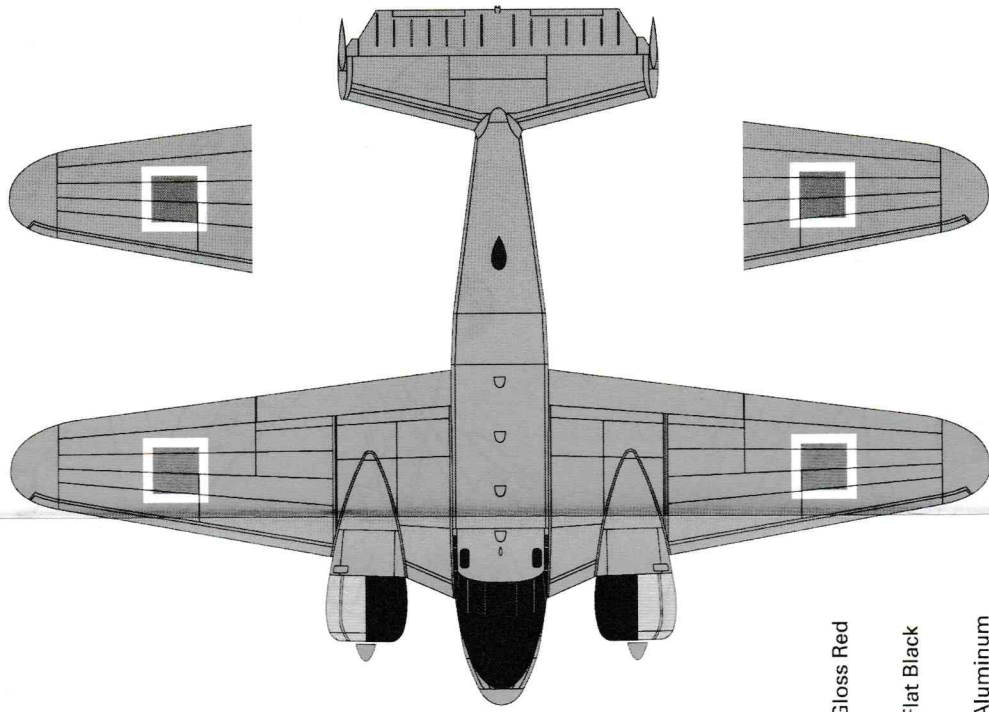
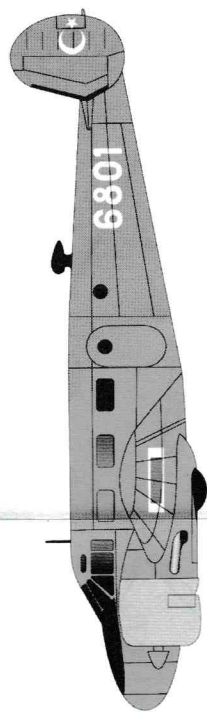
YAPISTIRMAYIN
DO NOT GLUE
NICHT KLEBEN



YAPIŞTIRIN
GLUE
KLEBEN



Beechcraft D-18S



Beechcraft D-18S

