



AerMacchi C.200 serie VII

1/48 scale

Pacific Coast Models, Inc.

613 Martin Ave., Bldg. 106
Rohnert Park, CA, USA 94928-2000
e-mail: info@pacmodels.com
www.pacmodels.com

The AerMacchi C.200 was first flown on Christmas Eve of 1937 and in March of 1938, carried out a "spectacular" flying test in front of the Air Ministry Committee for the Fighter Competition at the Regia Aeronautica's test field at Guidonia. Winning the fighter competition, the C.200 was ordered into mass production. The second place finisher, the Fiat G.50, had already been ordered into production due to Fiat's extremely strong connections to the government.

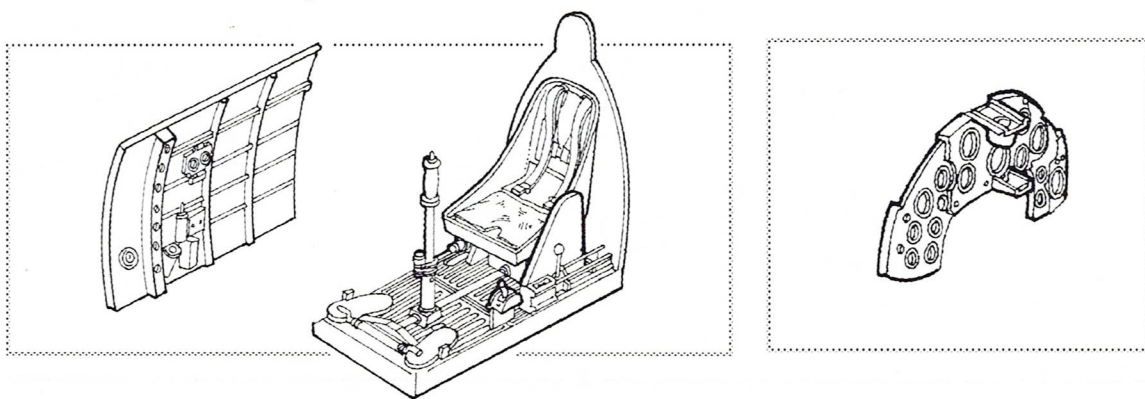
The C.200 served in every theater of the war for Italy, a true workhorse. Its pilots loved it for its fingertip handling and great maneuverability. The universal problem of engine torque rotation was brilliantly handled by making one wing shorter than the other! This resulted in a neutral stick eliminating constant control corrections and enabling the pilot to fly the aircraft to its potential. This very simple and practical solution made take-offs for rookie pilots routine and safe also reducing take-off losses to almost nil.

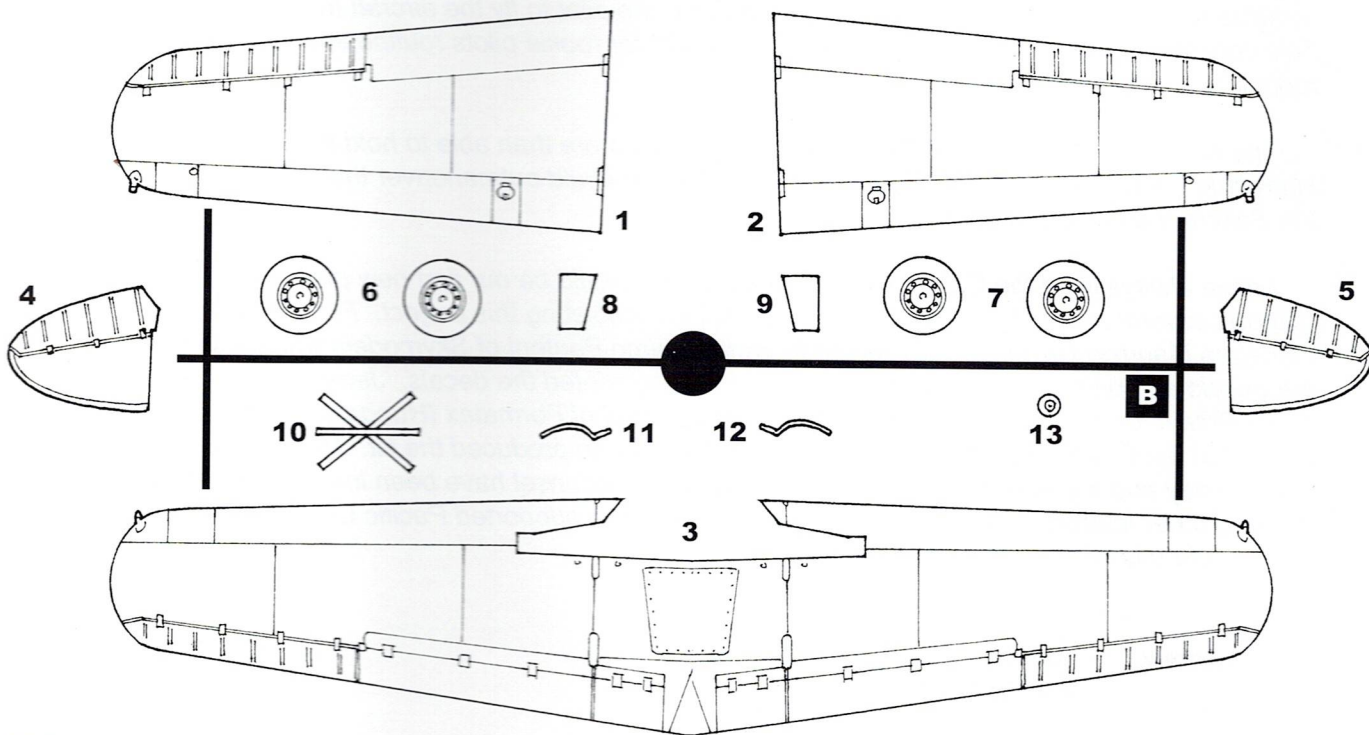
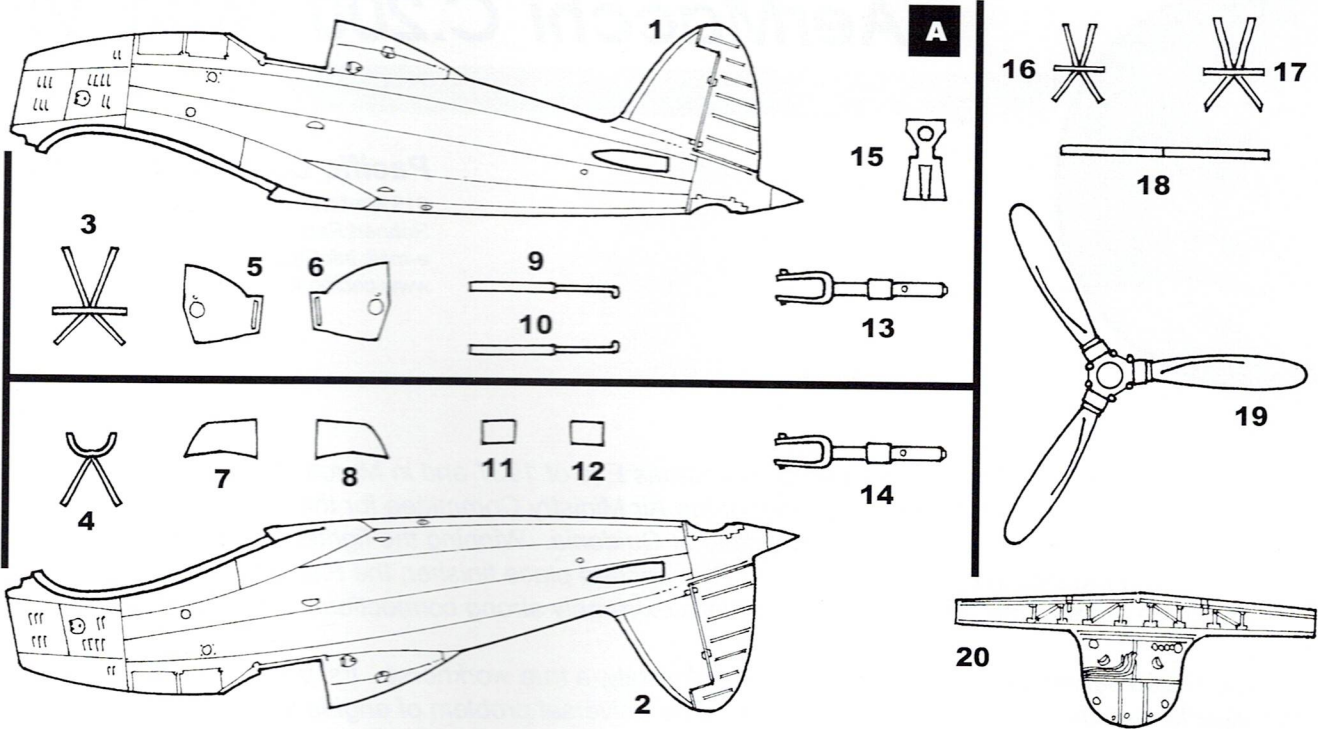
The Macchi C.200 in the Mediterranean theater was more than able to hold its own against Hurricane I, II's, P-40's and Spitfire I-V's. None of these could outmaneuver the C.200 and only the Spitfire V could outclimb it.

I have always liked the C.200, so I decided that this would be our first new plastic kit. I want to thank several people whose help was essential in completing this project. From Italy, master modelers Maurizio Di Terlizzi and Riccardo Trotta; Marco Pantoni of Skymodels who designed the decals and painting instructions and Cartograf who printed the decals. Jerry Boucher of Great Britain for his box design and artwork. Janos Borhi of Formatex (Hungary) for box printing. Eduard of the Czech Republic for the PE set and MPM who produced the kit. My best friend, Wes Shirley and my wife, Mary Ellen, whose advice and counsel have been invaluable to me in this and other matters. Last, thanks to all of you who have supported Pacific Coast Models, Inc. and bought this kit.

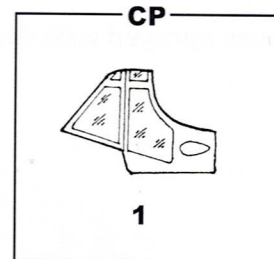
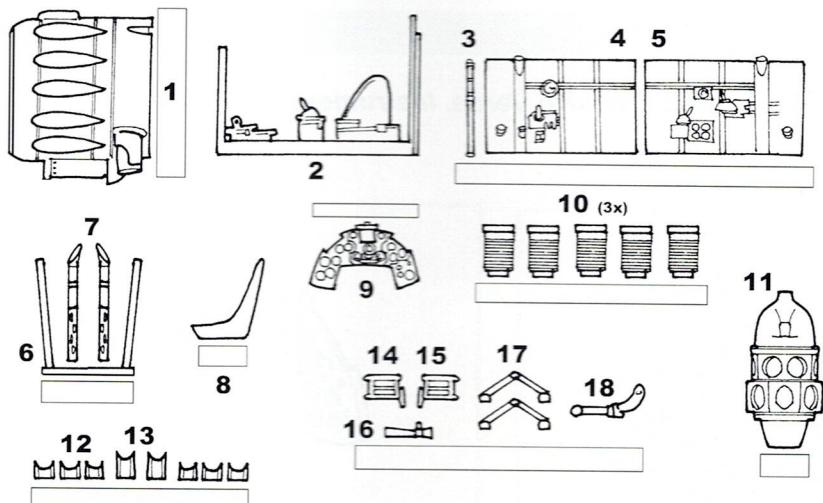
Sincerely, Ken Lawrence
Pacific Coast Models, Inc.

Interior was sprayed with Anti-corrosion Green/Anti-corrisivo Verde. Instrument panel was in black.

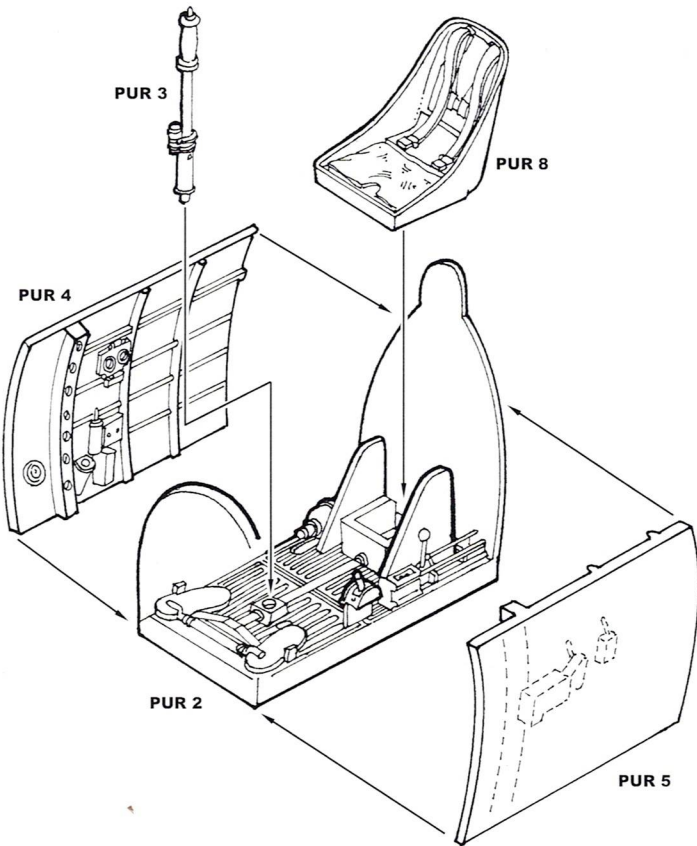




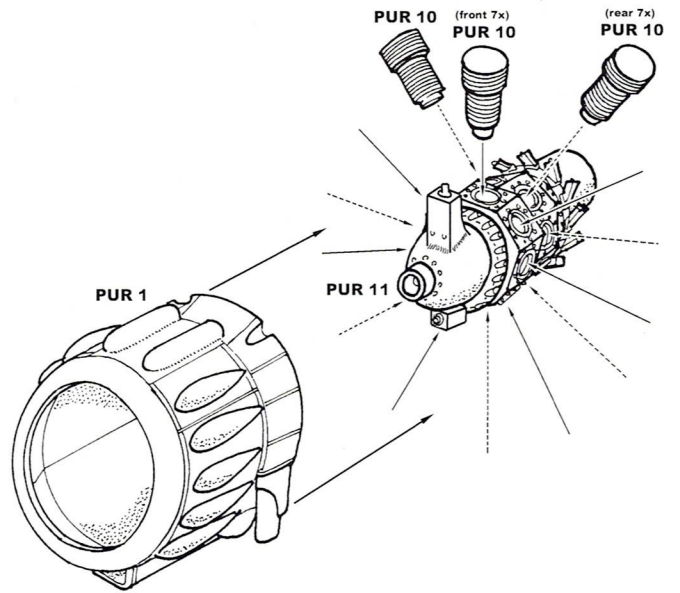
PUR



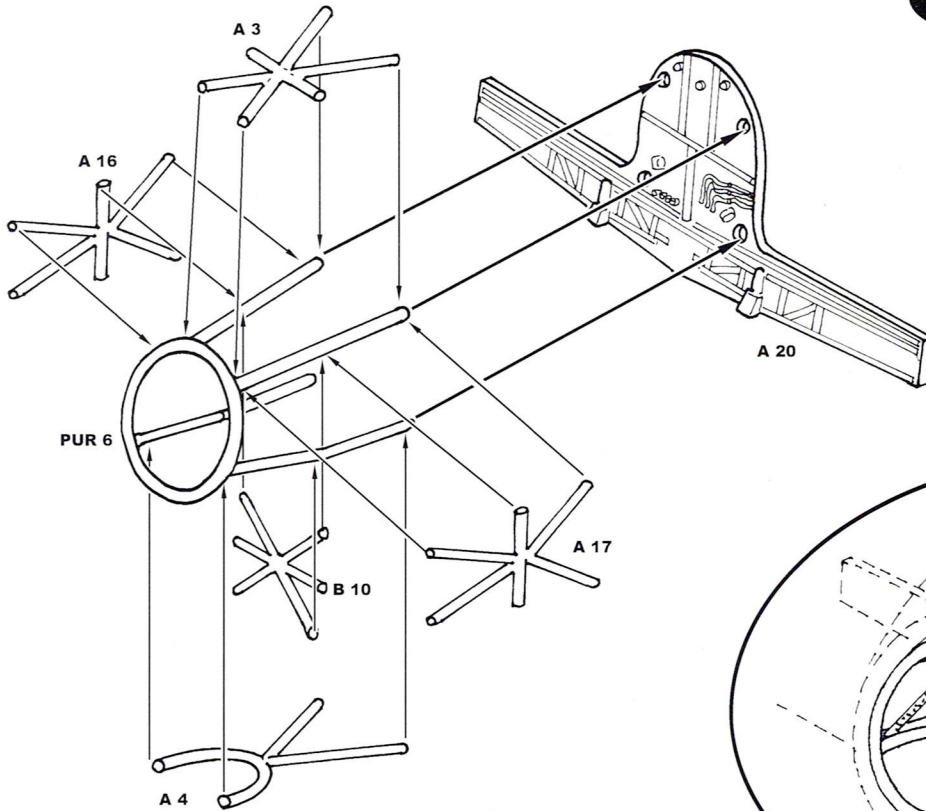
1



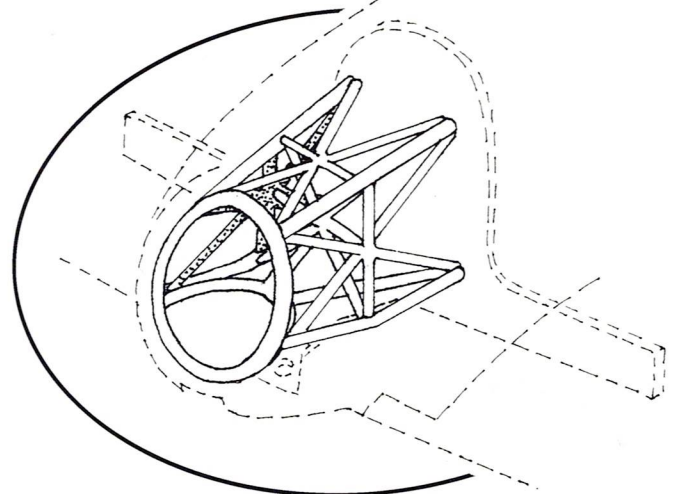
2



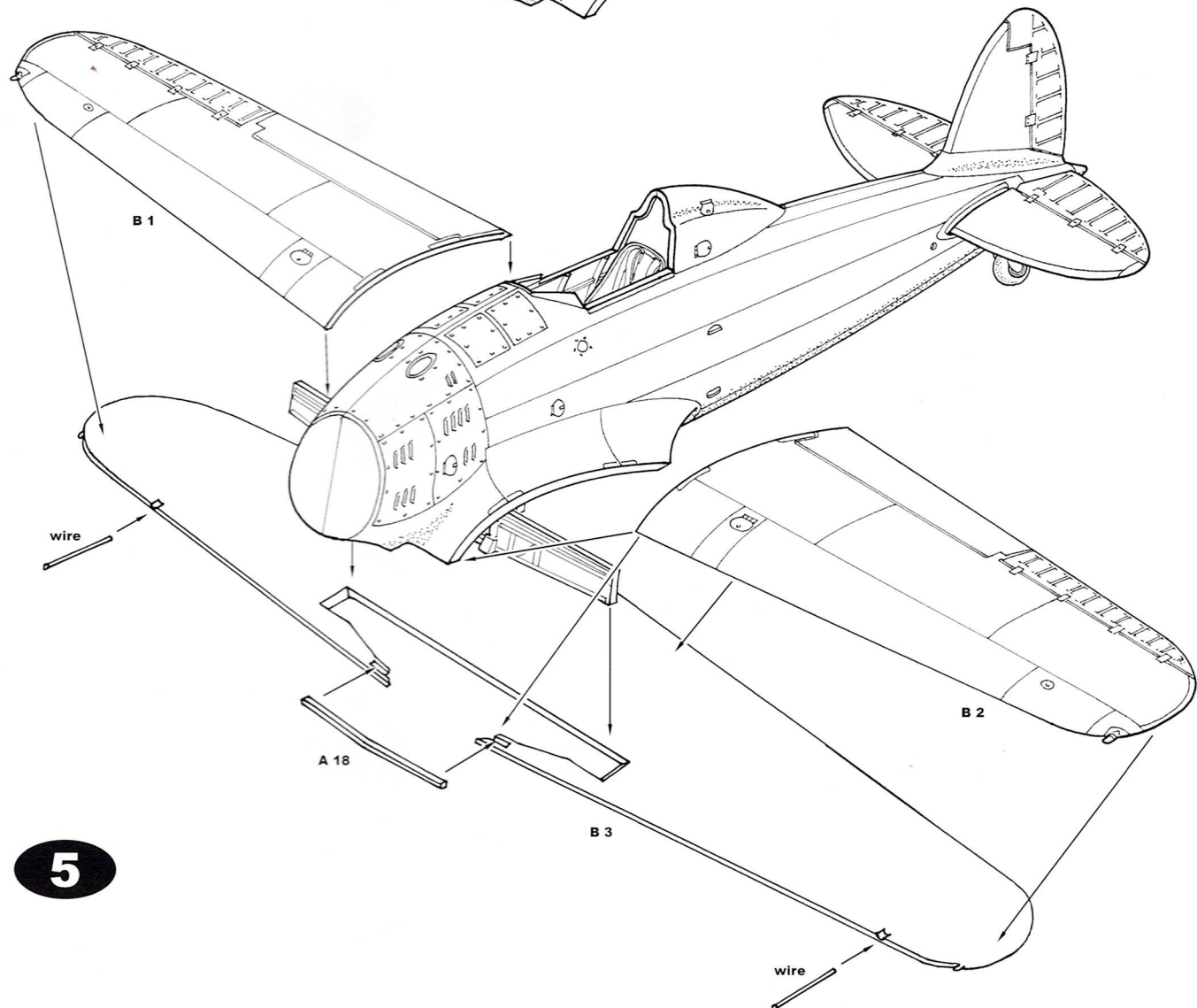
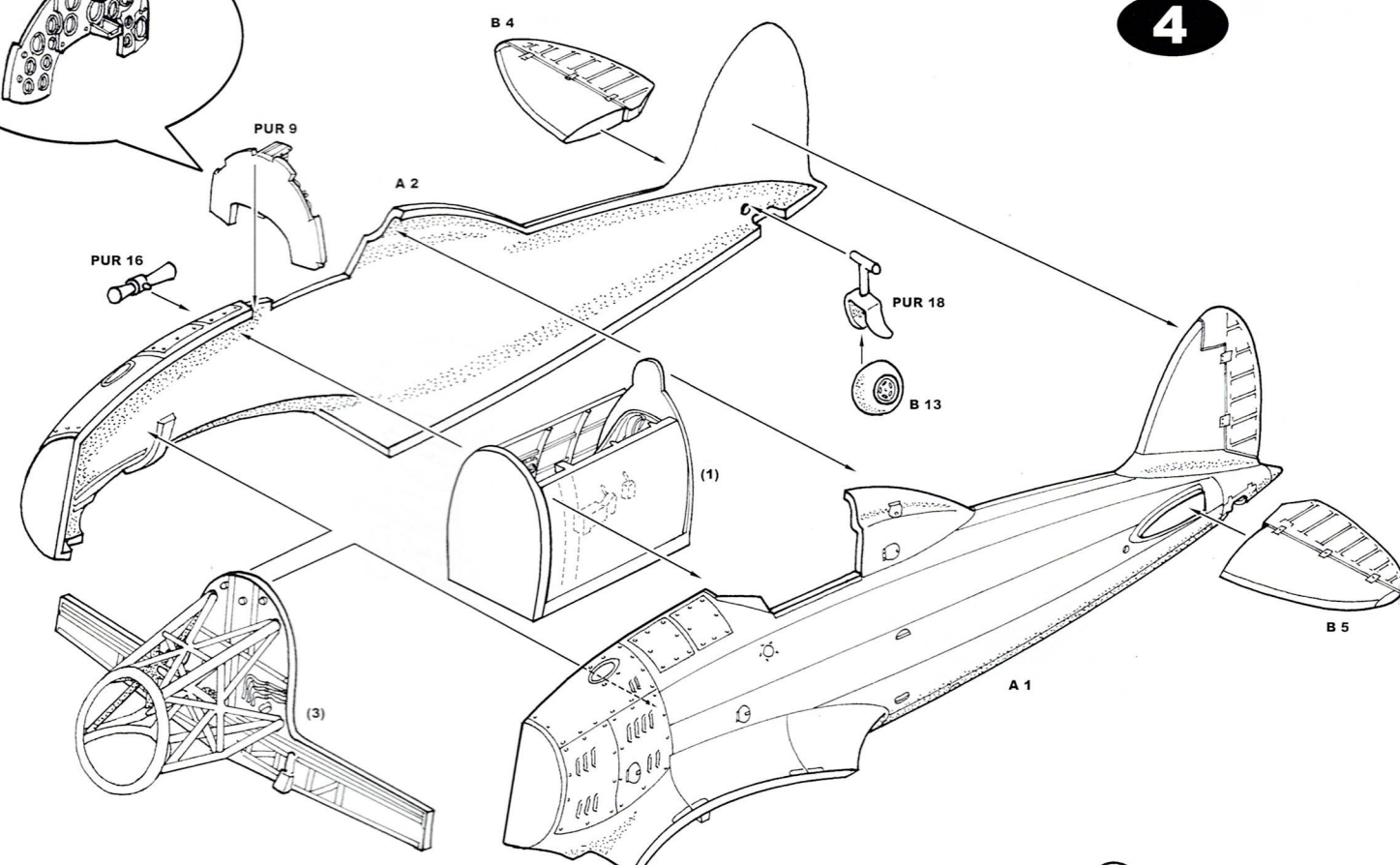
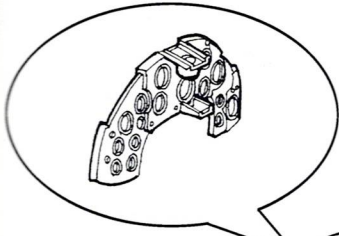
3



info

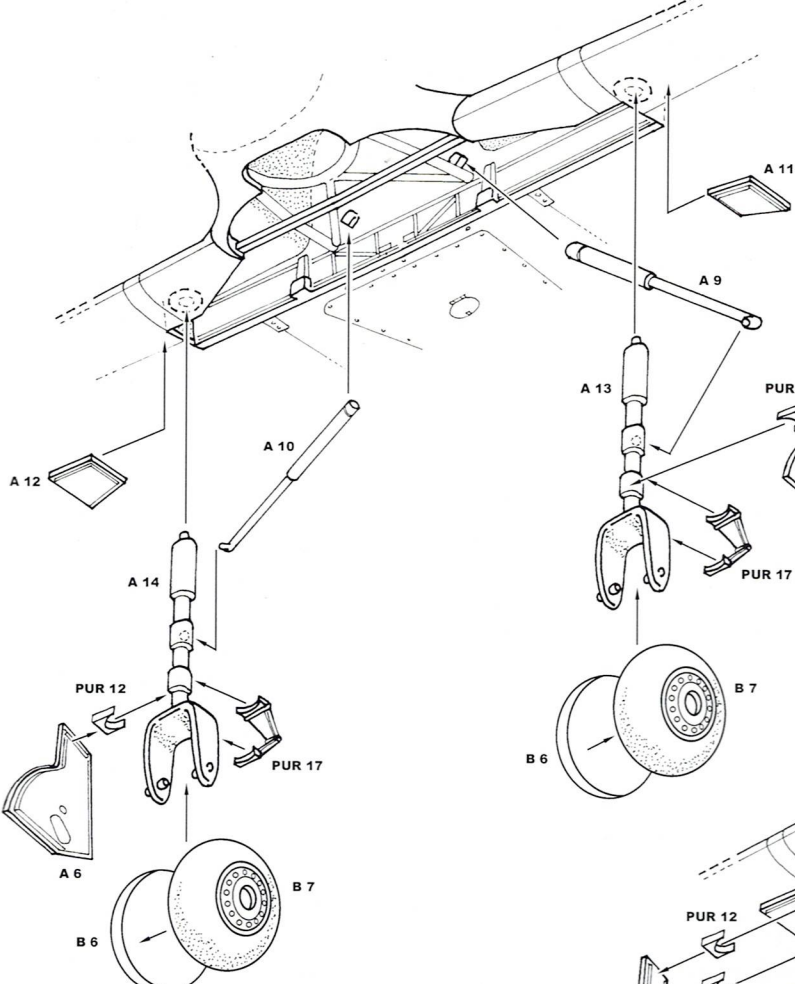


4

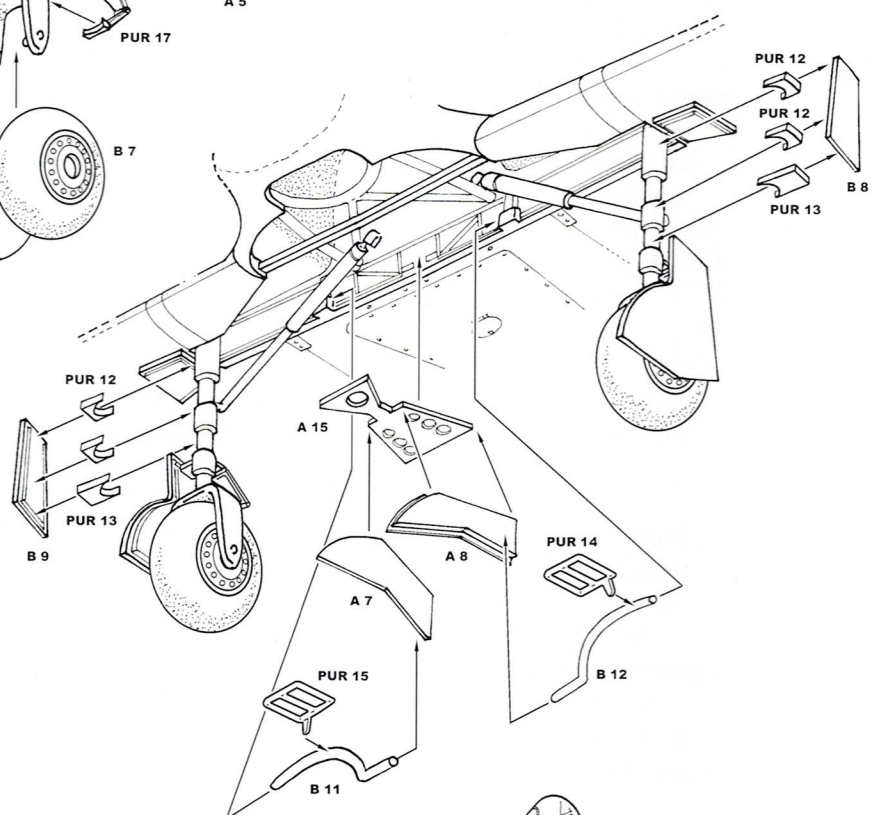


5

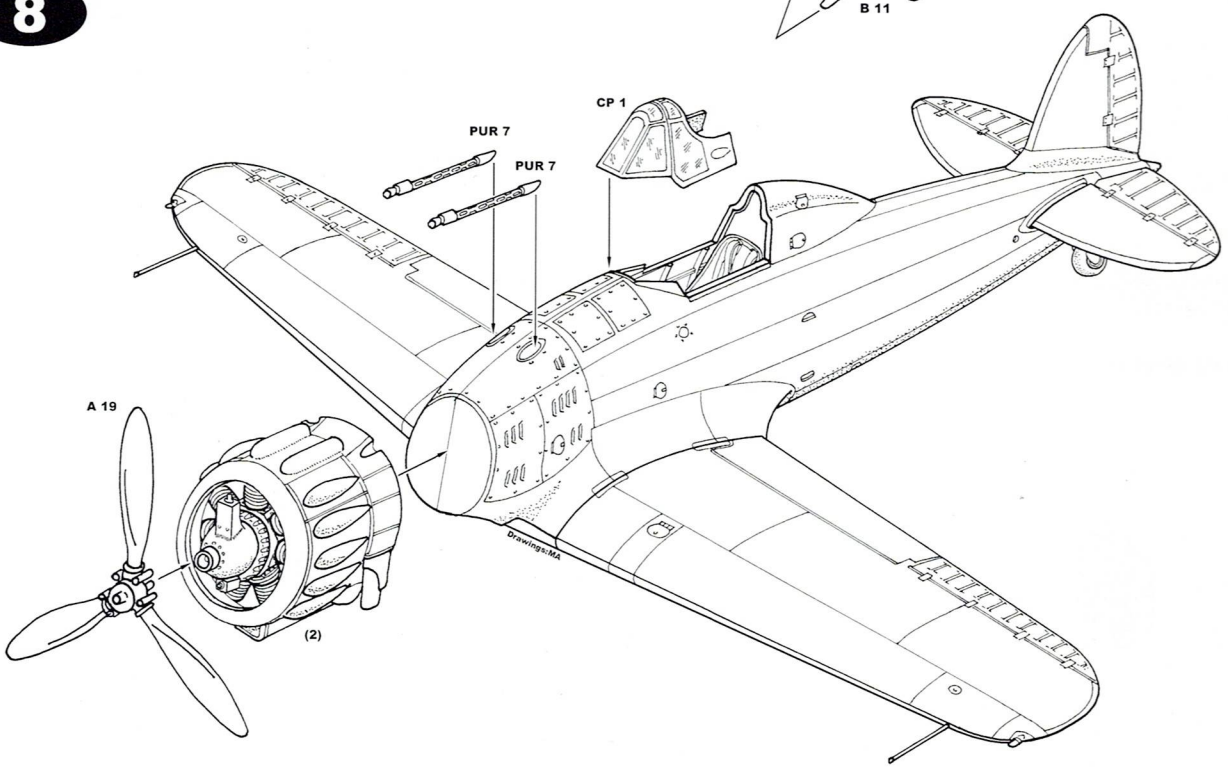
6



7



8

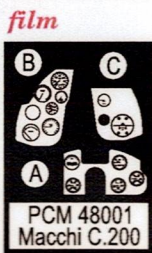
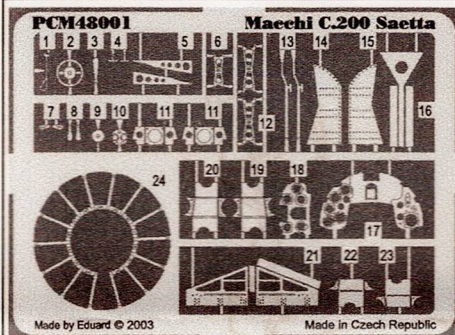




Macchi C.200 Saeta

PCM 48001

1/48 scale detail set for PACIFIC COAST • sada detailů pro model PACIFIC COAST 1/48

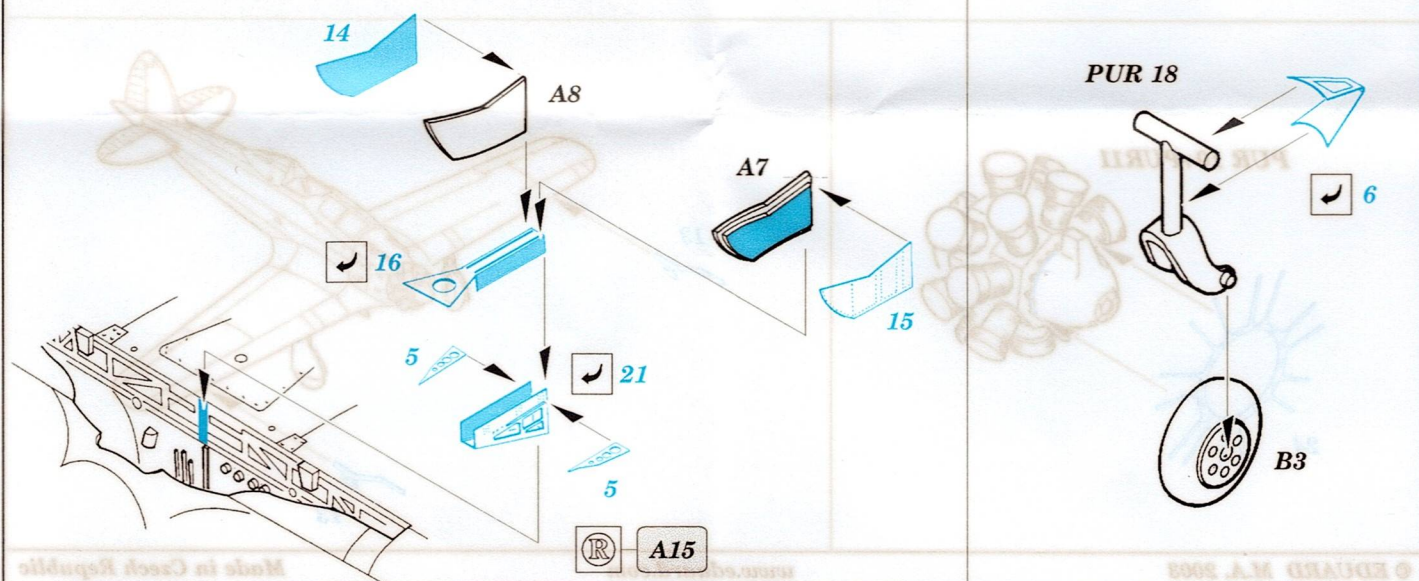
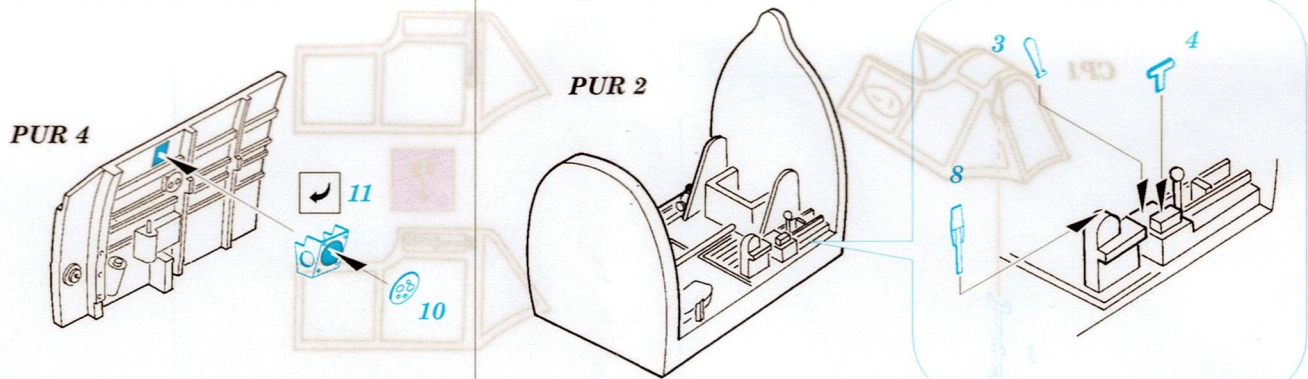
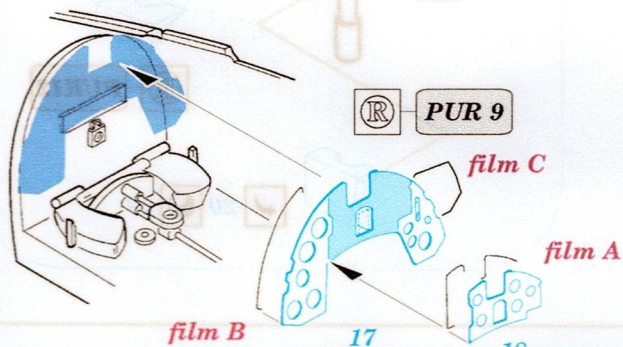
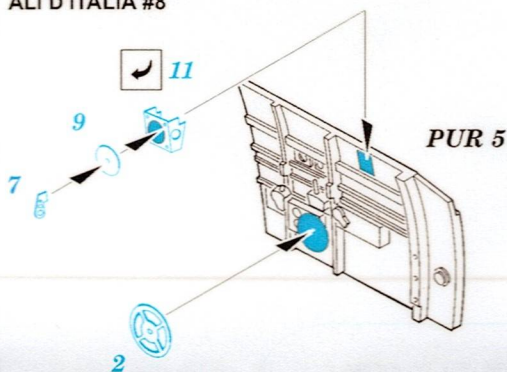


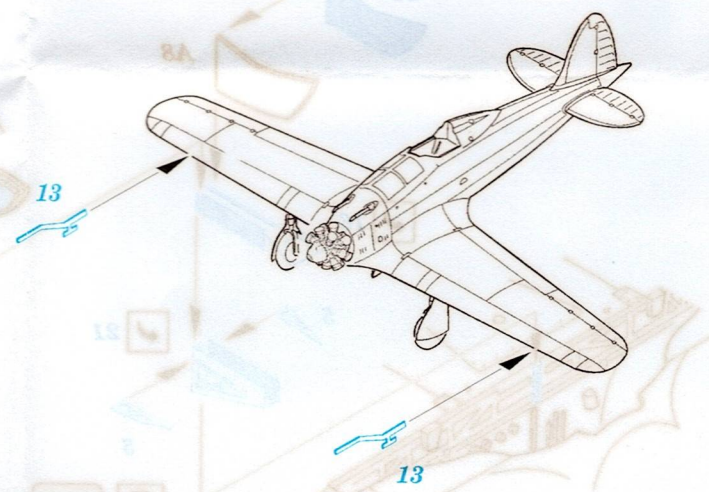
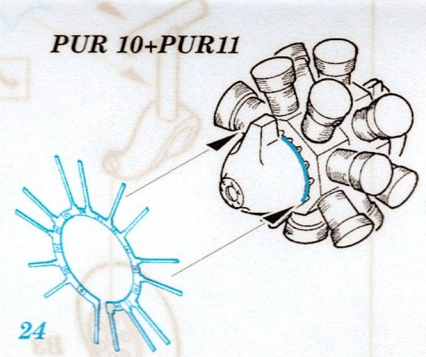
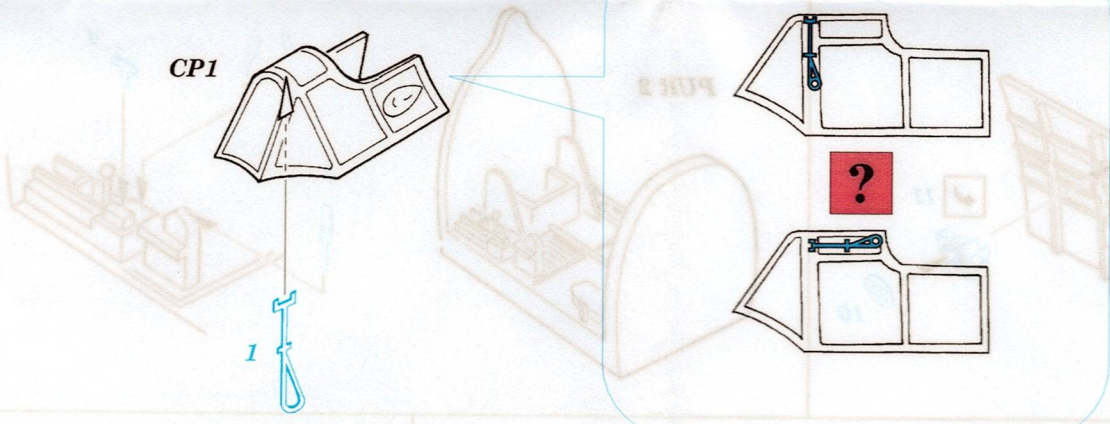
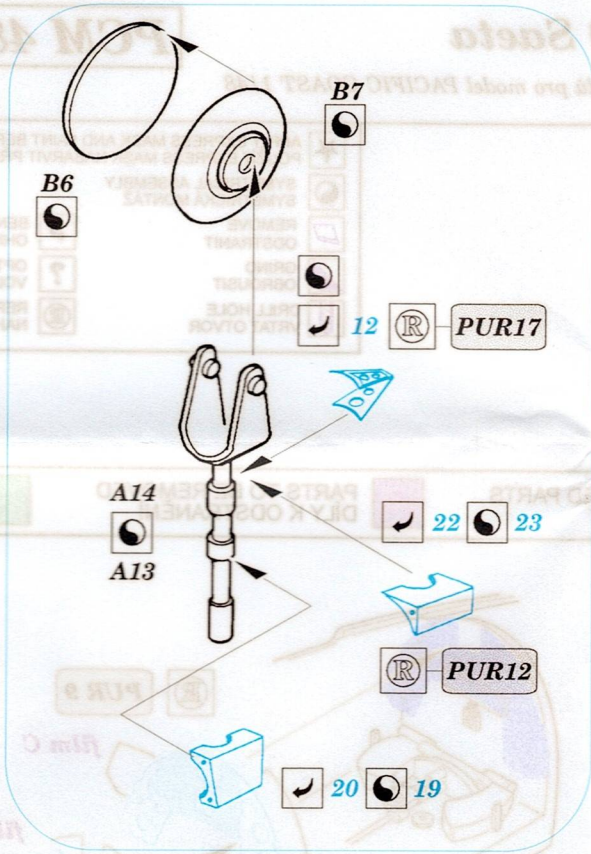
- ★ APPLY EXPRESS MASK AND PAINT BEFORE GLUING
POUŽIT EXPRESS MASK NABARVIT PŘED SLEPENÍM
- ◐ SYMMETRICAL ASSEMBLY
SYMETRICKÁ MONTÁŽ
- ✂ REMOVE
ODSTRANIT
- 🔪 GRIND
OBROUSIT
- 🔧 DRILL HOLE
VRTÁT OTVOR
- ↩ BEND
OHNOUT
- ❓ OPTION
VOLBA
- Ⓜ REPLACE
NAHRADIT

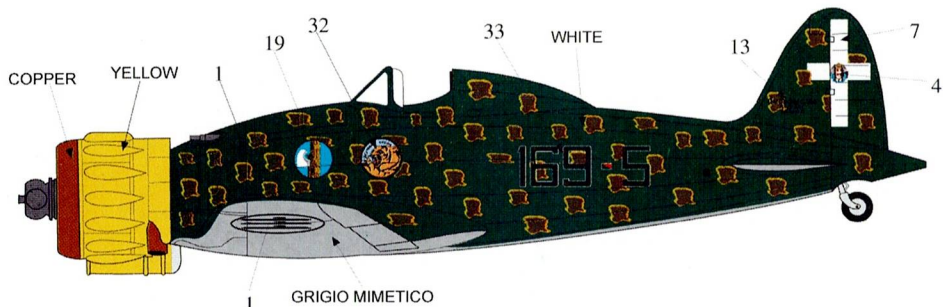
ORIGINAL KIT PARTS
PŮVODNÍ DÍLY STAVEBNICE
 PHOTO-ETCHED PARTS
LEPTANÉ DÍLY
 PARTS TO BE REMOVED
DÍLY K ODSTRANĚNÍ
 FILL
TMELIT

REFERENCES:

AERO DETAIL #15
ALI D'ITALIA #8







MACCHI C 200 , 169-5, of 169th Squadriglia, 16th Gruppo, 54th Stormo,



COLOUR GUIDE

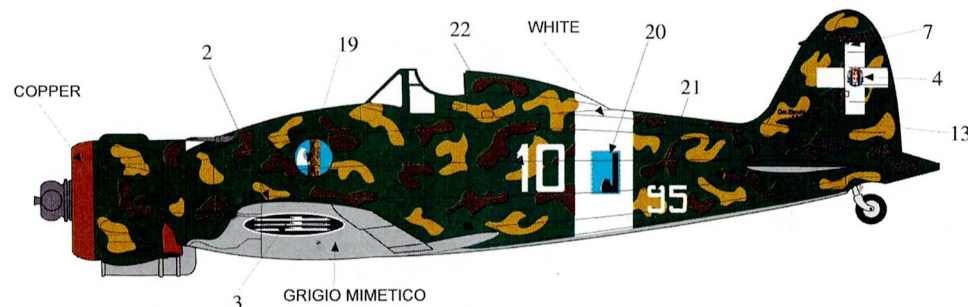
R.A.COLOUR	FS 595 B	HUMBROL	MOLAK	TAMIYA	GUNZE
GRIGIO MIMETICO	36293	140	LR4		317
VERDE MIM. 53192	34138				H312
VERDE MIMETICO 1	34528	102	LT1		
VERDE MIMETICO 2	34092	S 149	34092		302
VERDE MIMETICO 3	34102	117	34102	XF 58	H303
GIALLO MIMETICO 1	33594	103	LMU25		H27
GIALLO MIMETICO 2	33481	81	33481	XF 54	H58
GIALLO MIMETICO 3	33434	63	33434		H34
GIALLO MIMETICO 4	30266	94	30266		H71
BRUNO MIMETICO	30215	118	LG 79		H310



PACIFIC COAST MODELS INC.

MACCHI C 200 "SAETTA"

1/48



MACCHI C 200, 95-10, 95th Squadriglia, 3rd Stormo

