

Douglas D-558-3 Skyflash

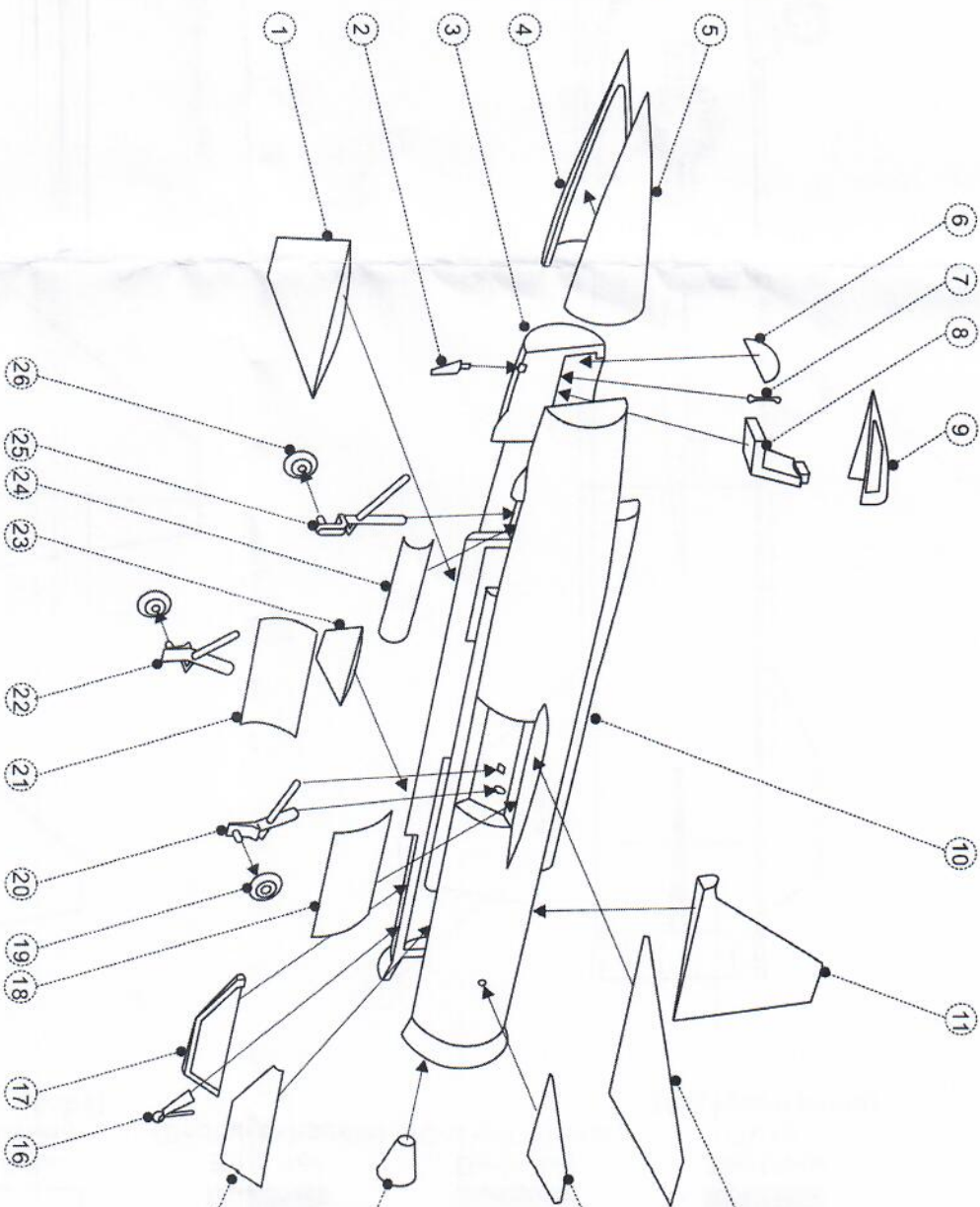
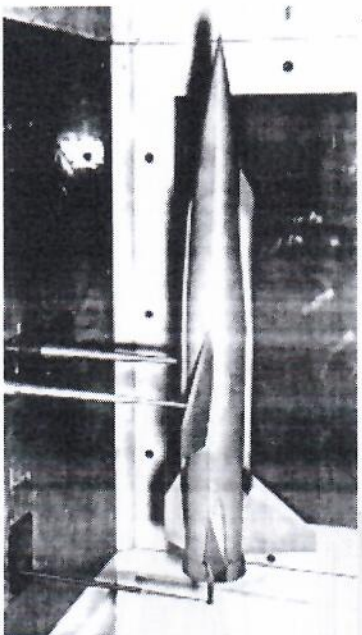
1/72 scale resin model kit

#AA-2053

In early 1950's, a several high-speed flight researches were being proceeded by different agencies, the NACA's hypersonic research, the Air Force's Project 1226 and the Navy's D-558 program. In 1954, Langley team of NACA gathered those similar researches from military services and aerospace industries, combined with the Air Force and Navy to launch the new "Project 1226" competition. As Navy liked to keep in the 'space race' and Douglas liked to run for future manned spaceplanes, the D-558-3 Skyflash (Model 684) design was sponsored by Navy to enter the competition. The D-558-3 was planned to install with the rocket engine which selected by NACA, and air-launch from Boeing B-50. In 1955, while Navy decided to save the development cost and not to be put in the dissenting vote position, NACA and the Air Force agreed with the North American's proposal as the winner of the competition which became the X-15 program.

Specifications:
 Wingspan - 19ft. 6in..
 Length - 46ft. 8in.
 Height- 13ft. 8in.
 Powerplants - 1x Reaction Motor XLR30-RM-2 rocket engine
 Crew - 1
 Max speed - Mach 6.62

Before Navy cancelled the D-558-3 project, it was proceeded with wind tunnel test by wind tunnel model.



- 1 Starboard main wing x 1
- 2 Aerial x 1
- 3 Starboard fuselage x 1
- 4 Starboard nose x 1
- 5 Port nose x 1
- 6 Instrument panel x 1
- 7 Control stick x 1
- 8 Pilot seat x 1
- 9 Canopy (vacform part) x 1
- 10 Port fuselage x 1
- 11 Fin x 1
- 12 Port main wing x 1
- 13 Port tail plane x 1
- 14 Engine exhaust x 1
- 15 Port lower fin x 1
- 16 Tail landing gear x 1
- 17 Starboard lower fin x 1
- 18 Port gear door x 1
- 19 Main wheel x 2
- 20 Port main landing gear x 1
- 21 Starboard gear door x 1
- 22 Starboard landing gear x 1
- 23 Starboard tail plane x 1
- 24 Nose gear door x 1
- 25 Nose landing gear
- 26 Nose wheel x 1

ANIGRAND
 CRAFTSWORK

PO Box 40, Texaco Road, NT.,
 Hong Kong.
 E-mail : email@anigrand.com
 Web : <http://www.anigrand.com>

Flat black
(Tires)
(Anti-glare panel)



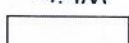
Dark grey
(Cockpit interior)
(Engine exhausts)



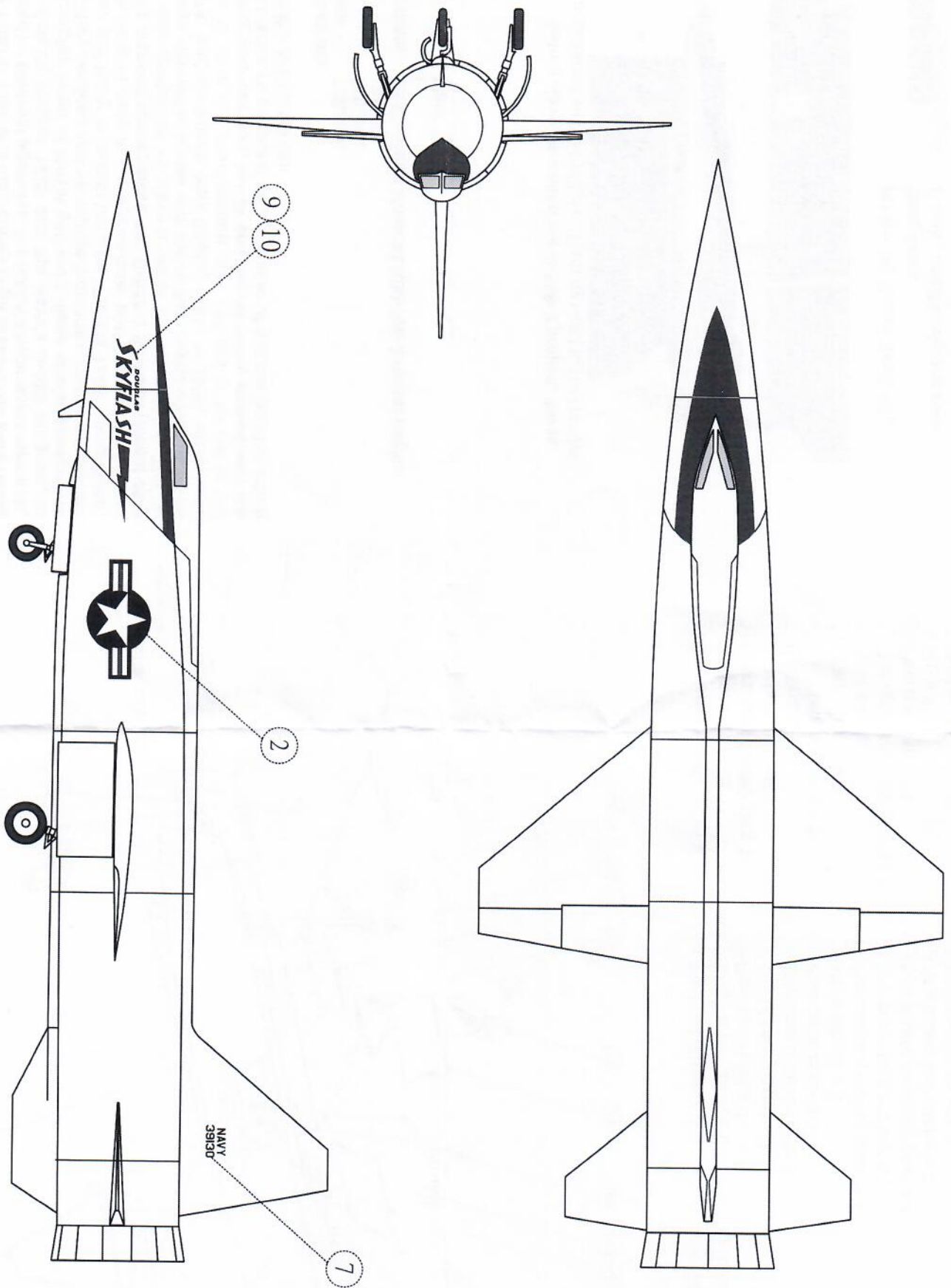
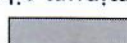
Burn Iron



White
(Overall)
(Wheel hubs)



Aluminum silver
(Landing gears)



NAVY
39130

SKYFLASH

9
10

2

7