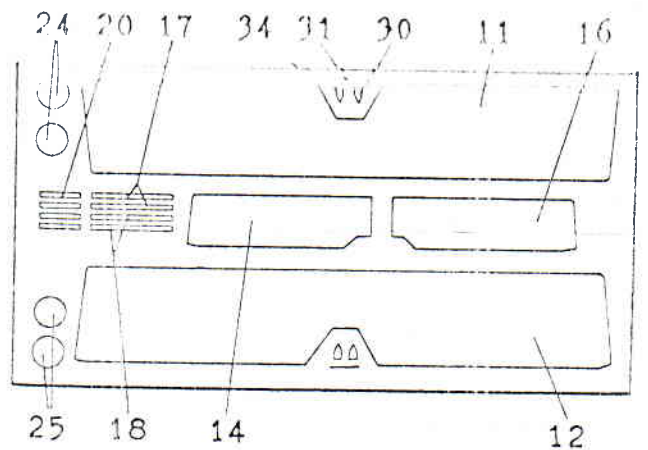
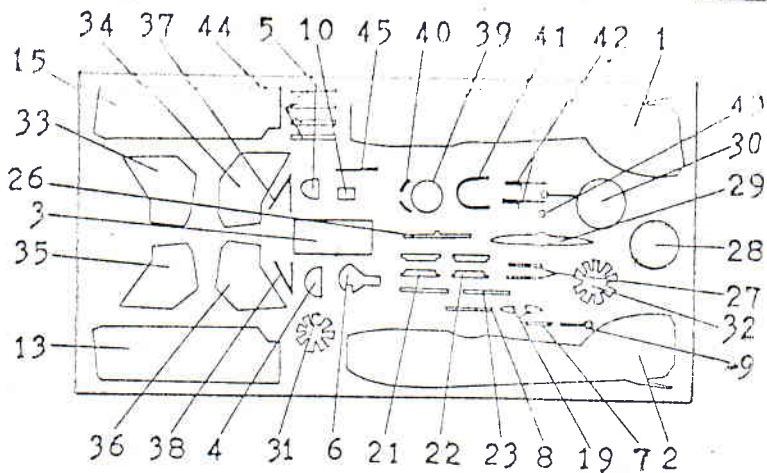
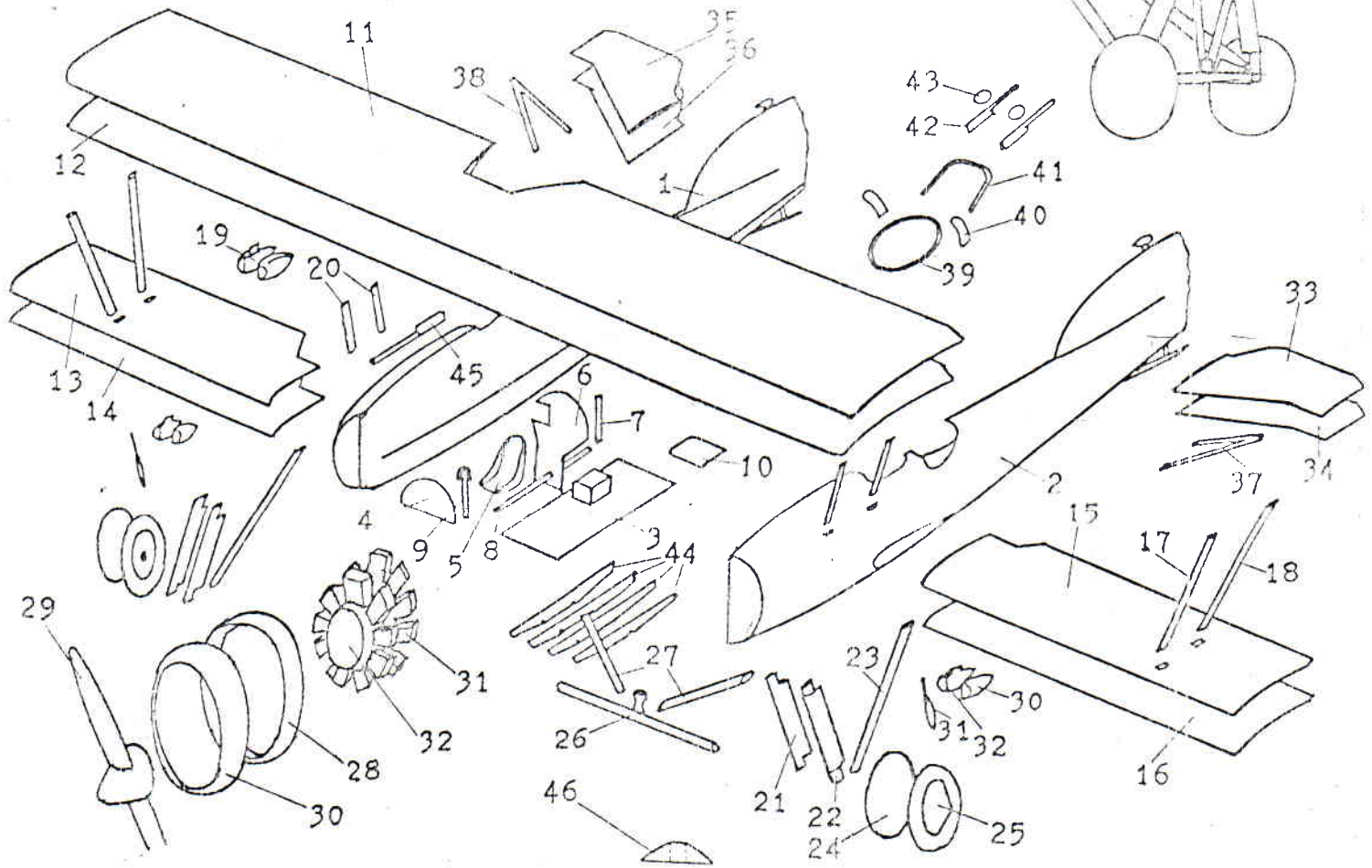
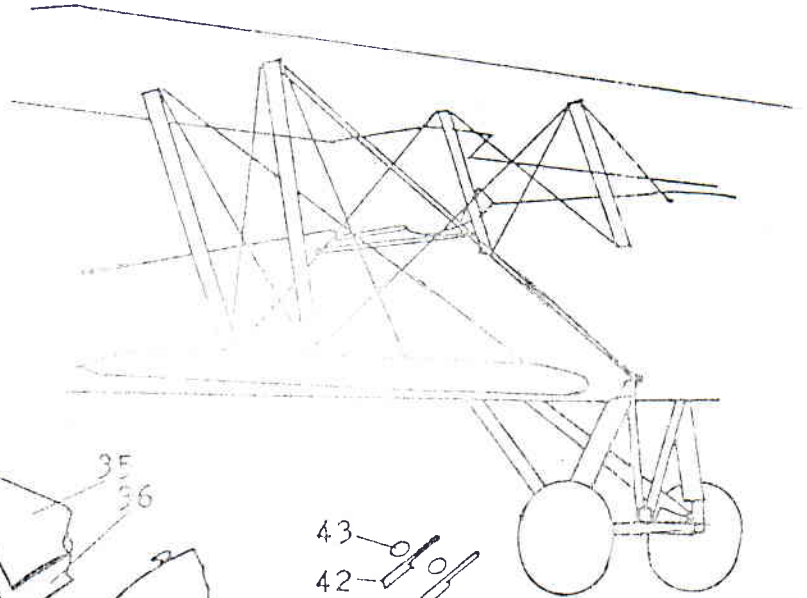
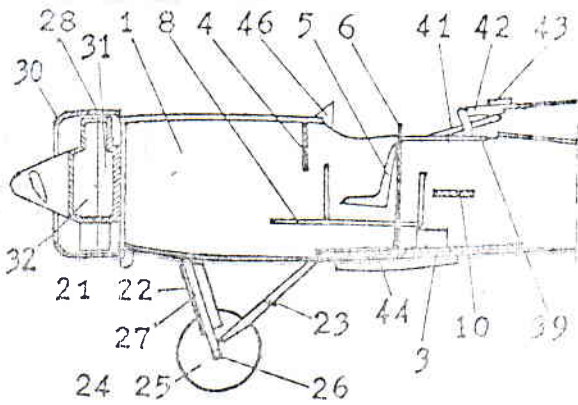
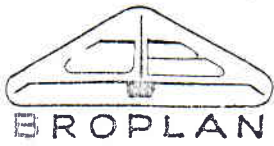




POTEZ XXV

BRISTOL JUPITER VII



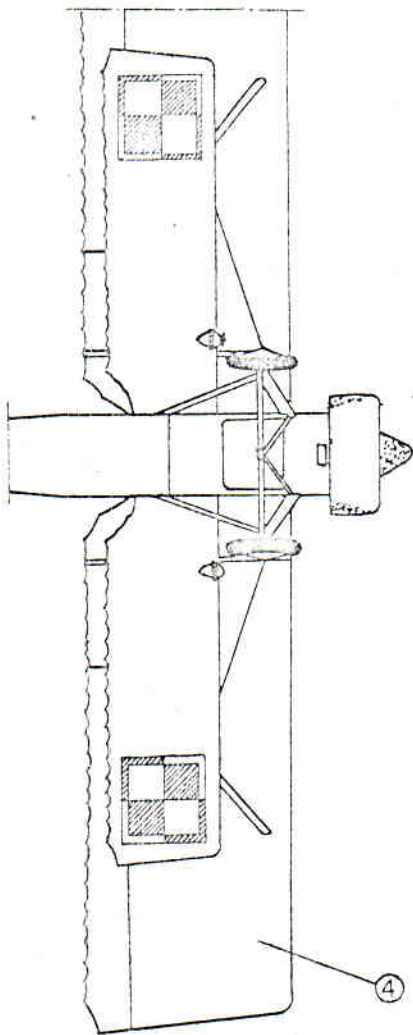


POTEZ XXV

BRISTOL JUPITER VII

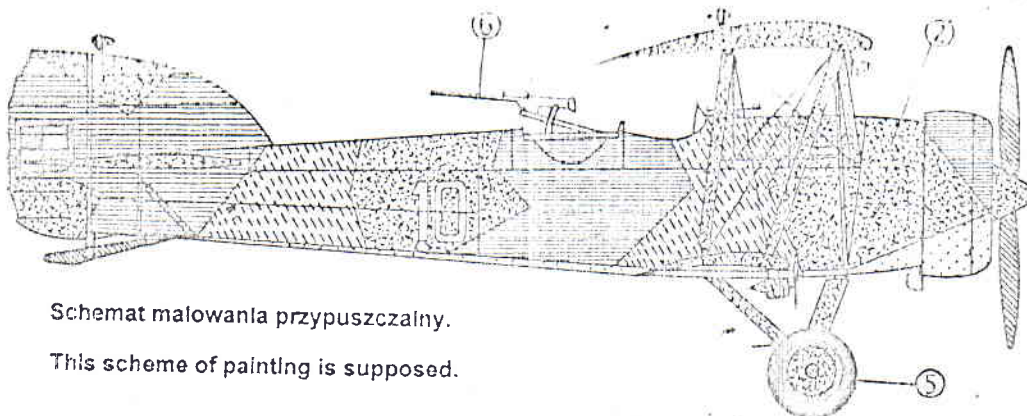
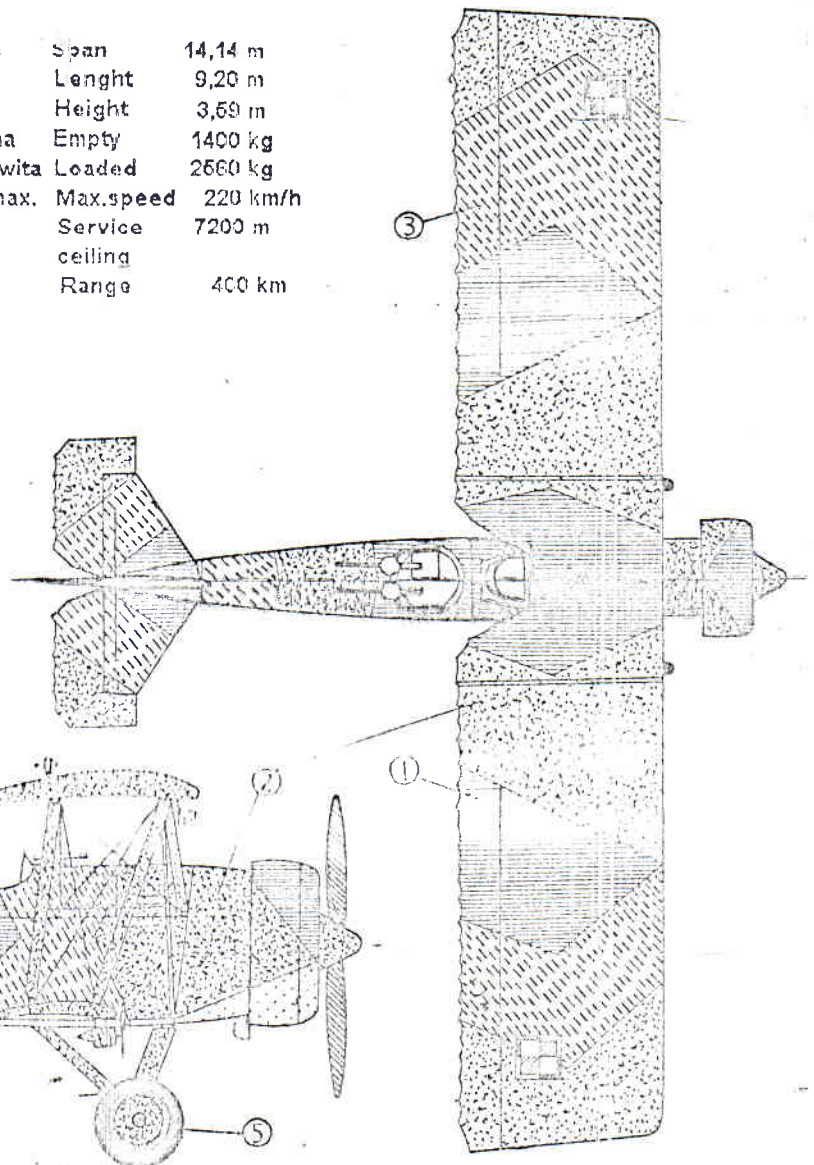
Dwuosobowy lekki bombowiec, półtorapłat o konstrukcji drewnianej.
 Napęd: Silnik gwiazdowy Bristol Jupiter VII o mocy 490 kW.
 Uzbrojenie: 1 k.m. Vickers 7,9 mm, 2 k.m. obserwatora Vickers wz. F 7,9 mm na obrotnicy.

Two-seat light bomber. 47 aircrafts were used by Polish Air Force during 1936 - 1939.
 Plant: One 490 h.p. Bristol Jupiter VII nine-cylinder radial engine.
 Armament: 1 fixed forward 7,9 mm Vickers machine-gun and two 7,9 mm Vickers wz. F machine-guns in rear cockpit.



	FS	HUMBROL
1 Jasnooliwkowy	34151	151 Interior Green
2 Ciemnozielony	34697	2x60 Matt Grass Green
		1x116 Matt US Dark Green
3 Khaki jasny	30118	142 Matt Field Drab
4 Jasnoblękitny	35500	56x34 Matt White
		1x25 Matt Blue
		1x89 Matt Middle Blue
		2x64 Matt Light Grey
5 Czarny		33 Matt Black
6 Czarny metaliczny		53 Gunmetal

Rozpiętość	Span	14,14 m
Długość	Length	9,20 m
Wysokość	Height	3,59 m
Masa własna	Empty	1400 kg
Masa całkowita	Loaded	2660 kg
Prędkość max.	Max. speed	220 km/h
Pułap	Service ceiling	7200 m
Zasięg	Range	400 km



Schemat malowania przypuszczalny.

This scheme of painting is supposed.