

Item No. D5-12 scale 1/48 wingsy kits

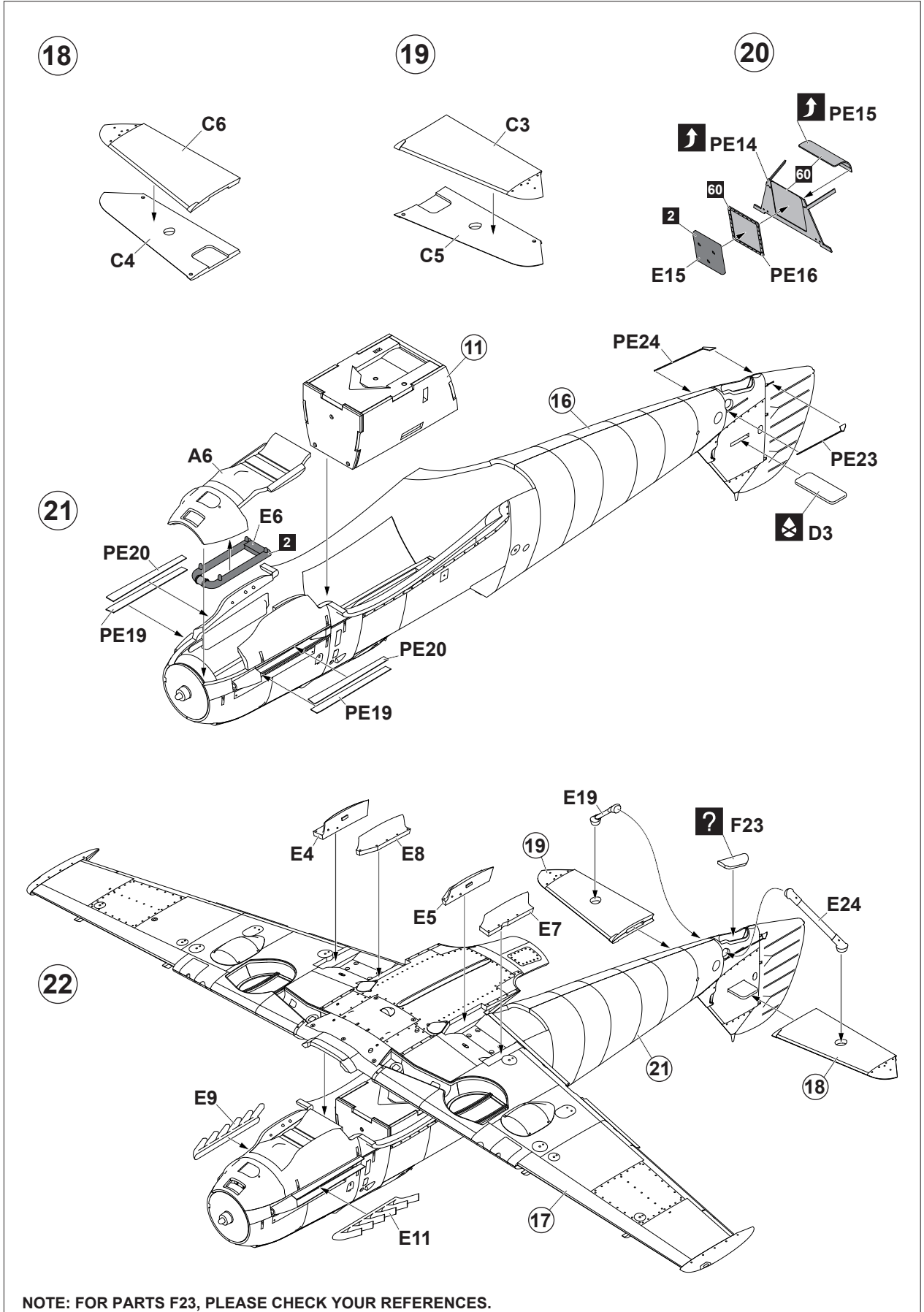
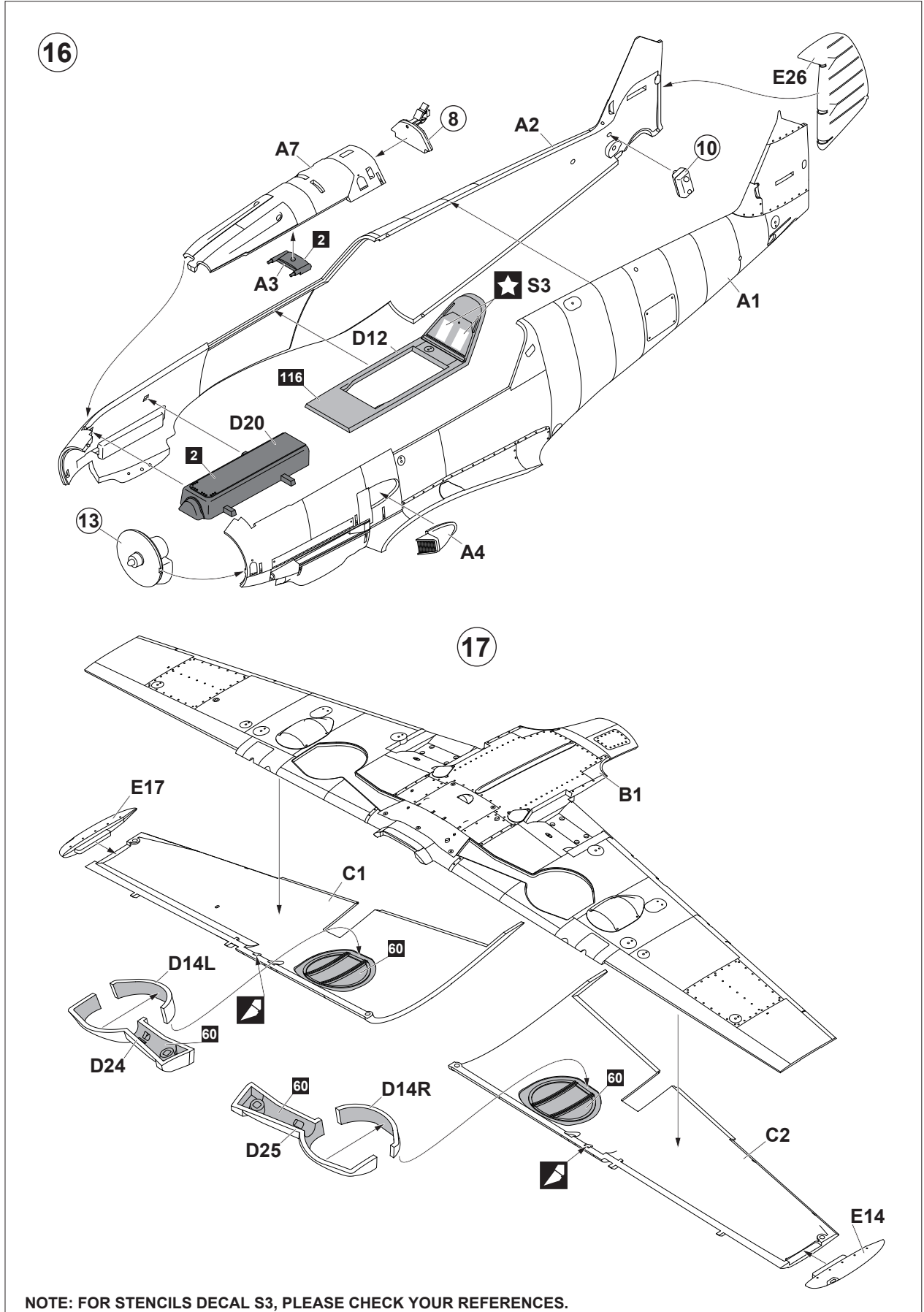
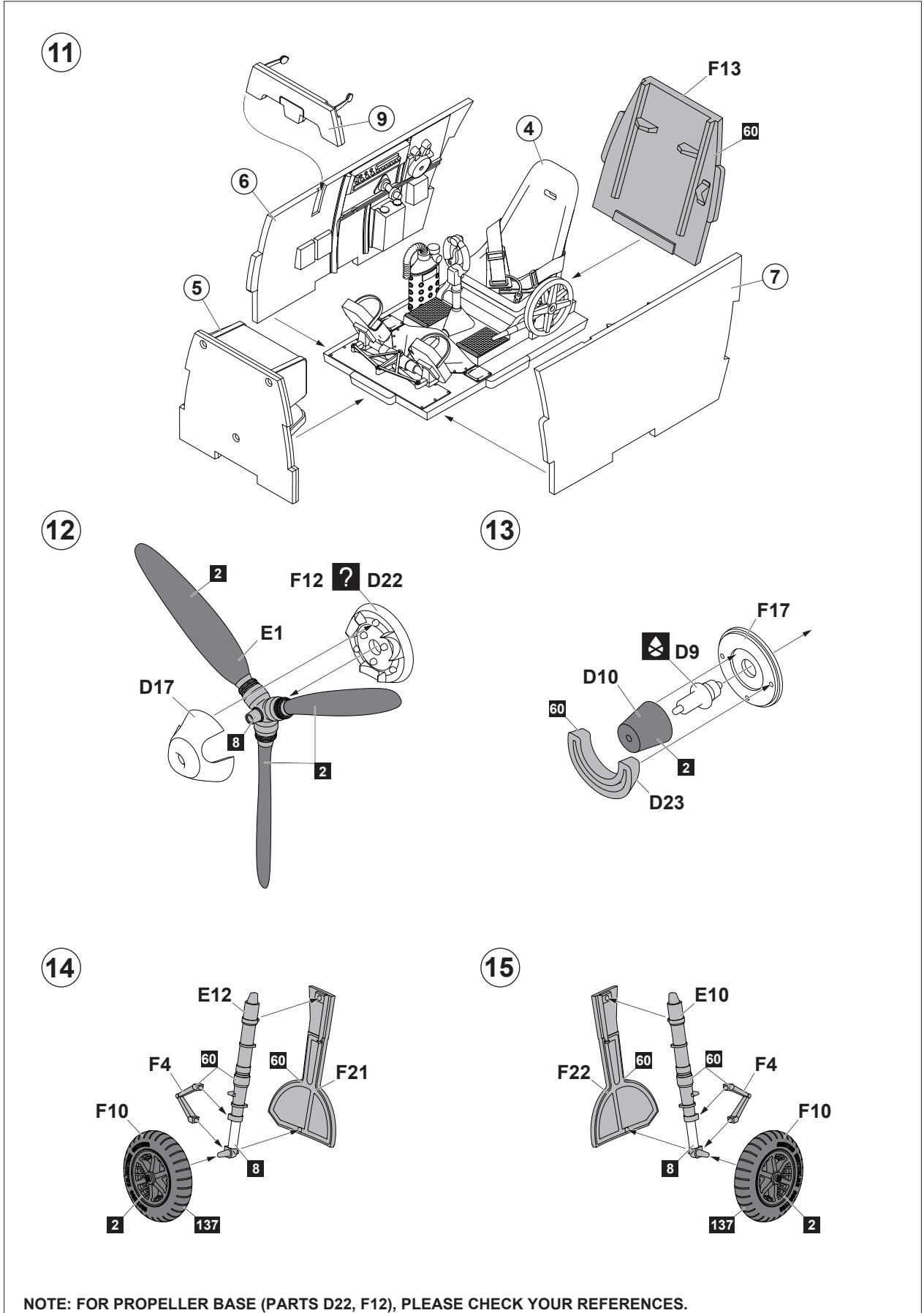
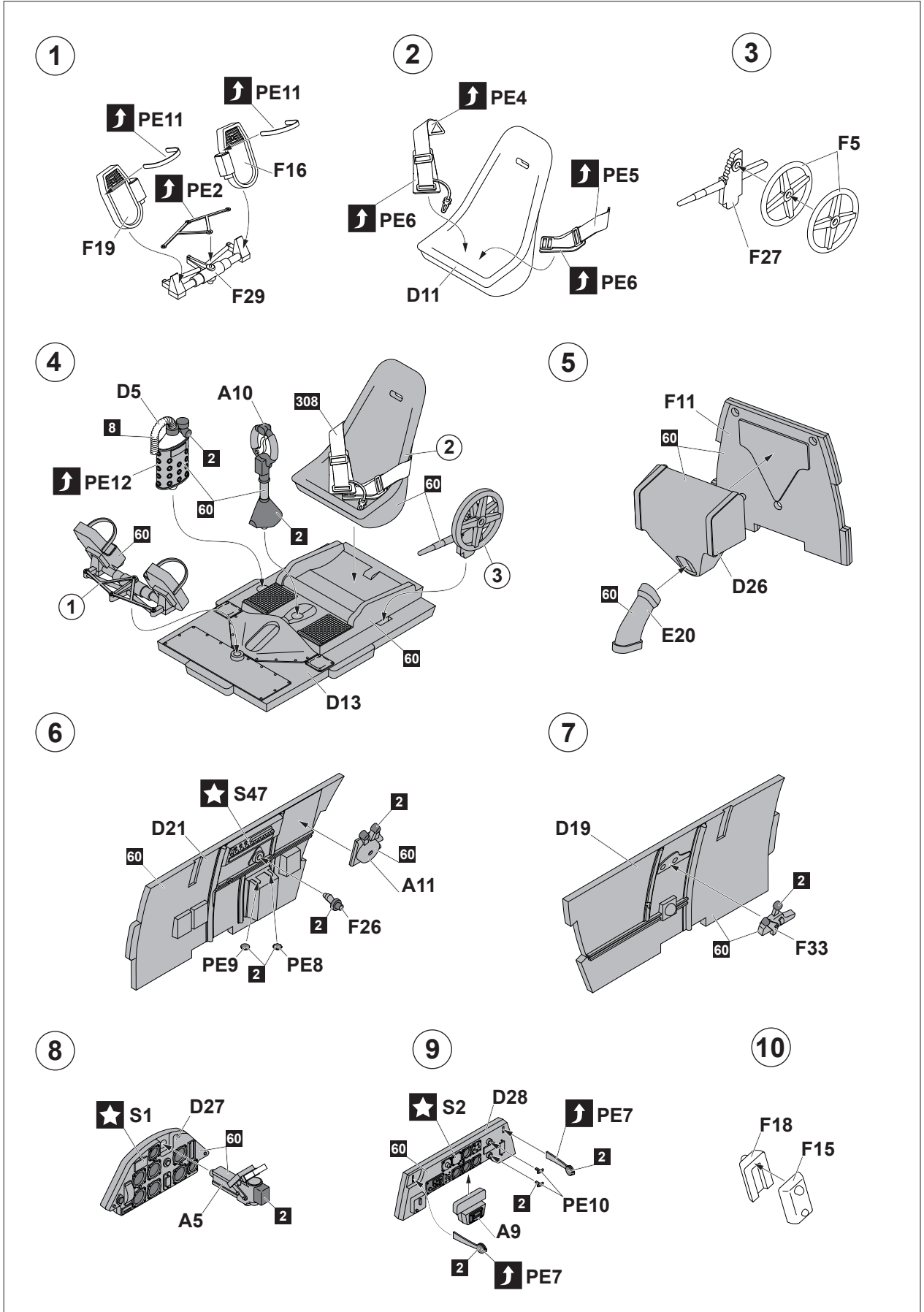
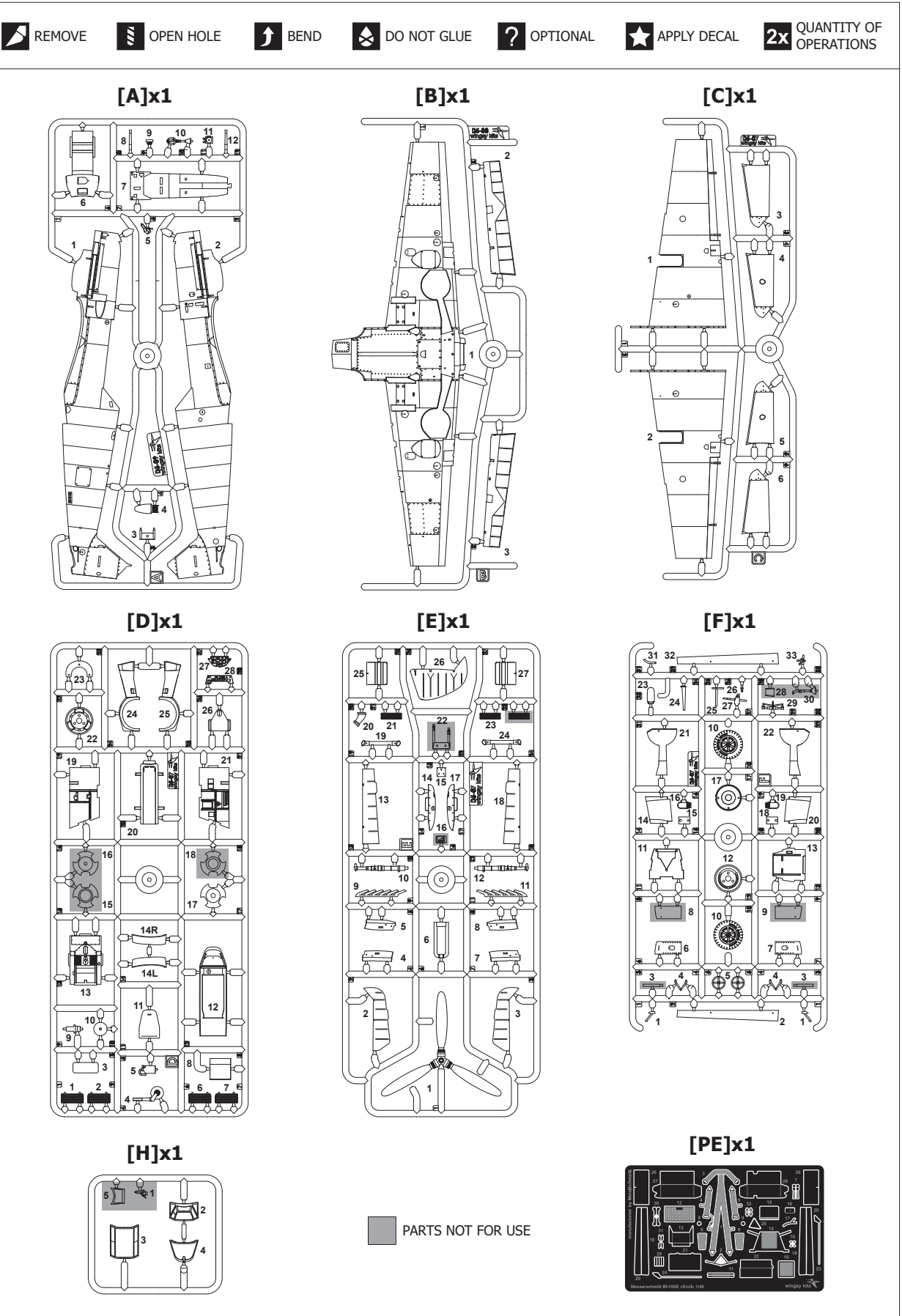
Swiss Air Force Fighter MESSERSCHMITT Bf 109 E-3a «Emil»

The Messerschmitt Bf 109 E «Emil» was a further development of the very successful fighter line developed by Bayerische Flugzeugwerke under the leadership of Wilhelm Messerschmitt and Robert Lusser, which went into production at the end of 1938. To improve on the performance afforded by the 441-515 kW (600-700 PS) Jumo 210, the larger, longer Daimler-Benz DB 601A engine was used, yielding an extra 223 kW (300 PS) at the cost of an additional 181 kg (400 lb). A much bigger cooling area was needed to disperse the extra heat generated by the DB 601, and this led to the first major redesign of the basic airframe: it was decided to move the main radiators to the undersurfaces of the wings immediately outboard of the junction of the wing root and wing panel, just forward of the trailing edges' inner ends, leaving the oil cooler under the nose in a small, streamlined duct. The new radiator position also had the effect of counterbalancing the extra weight and length of the DB 601, which drove a heavier three-bladed Vereinigte Deutsche Metallwerke (VDM)-made propeller. Because the radiators were mounted near the trailing edge of the wing, coinciding with the increased speed of the airflow accelerating around the wing camber, cooling was more effective than that of the Jumo engine 100s, albeit at the cost of extra ducting and piping, which was vulnerable to damage. The Bf 109 E-3a version was exported to a number of countries and could differ from the serial E-3 in the composition of on-board equipment and weapons. Switzerland was one of the largest buyers of the Bf 109 E-3a, purchasing 80 aircraft purchased in two batches of 30 and 50 aircraft between May 1939 and April 1940 and another 9 built from spare parts later. At the request of the Swiss Air Force, it was decided to use two 7.45 mm FM-G 29 machine guns with 960 rounds over the engine and a 20 mm Oerlikon FF-K cannons with 60 rounds in each wing. The FM-G 29 was mounted without axial offset and closer together (300 mm compared to 340 mm), which required a major modification of the engine cooling, as well as a new storage and ammunition supply system. In addition, a Revi 3C gunsight was installed, the control stick was changed to which was similar to British control stick and a French radio made under license in Switzerland.

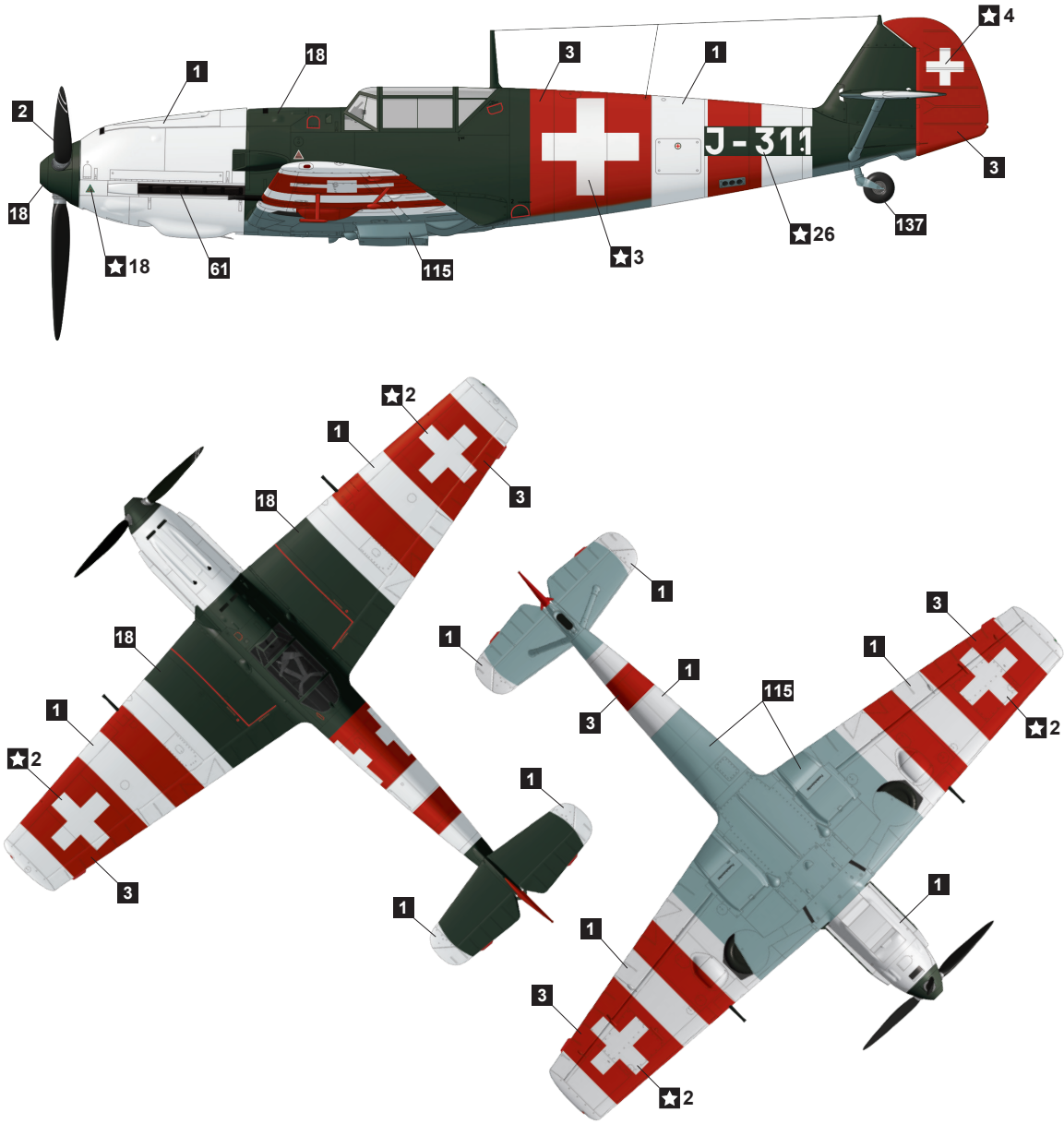
Specifications Bf 109 E-3a - Crew: 1, Length: 28'10 1/2" (8.8m); Wingspan: 32'5 1/2" (9.9m); Weight: 4189-5875 lbs (1190-2665 kg); Wing area: 174.05 sq. feet (16.7 sq. m); Max speed: 348 mph (560 km/h) at 14560 feet (4500 m); Climb rate: 3510 feet per min (17.83 m/s); Ceiling: 36500 feet (11125 m); Range: 410 miles (660 km); Engine: 1 x 805 kW (1085 hp) Daimler-Benz DB601A (12-cylinder, direct fuel injection, inverted V engine); Armament: 2 x 7.45 mm FM-G 29 machine guns and 2 x 20 mm Oerlikon FF-K cannons.

CAUTION

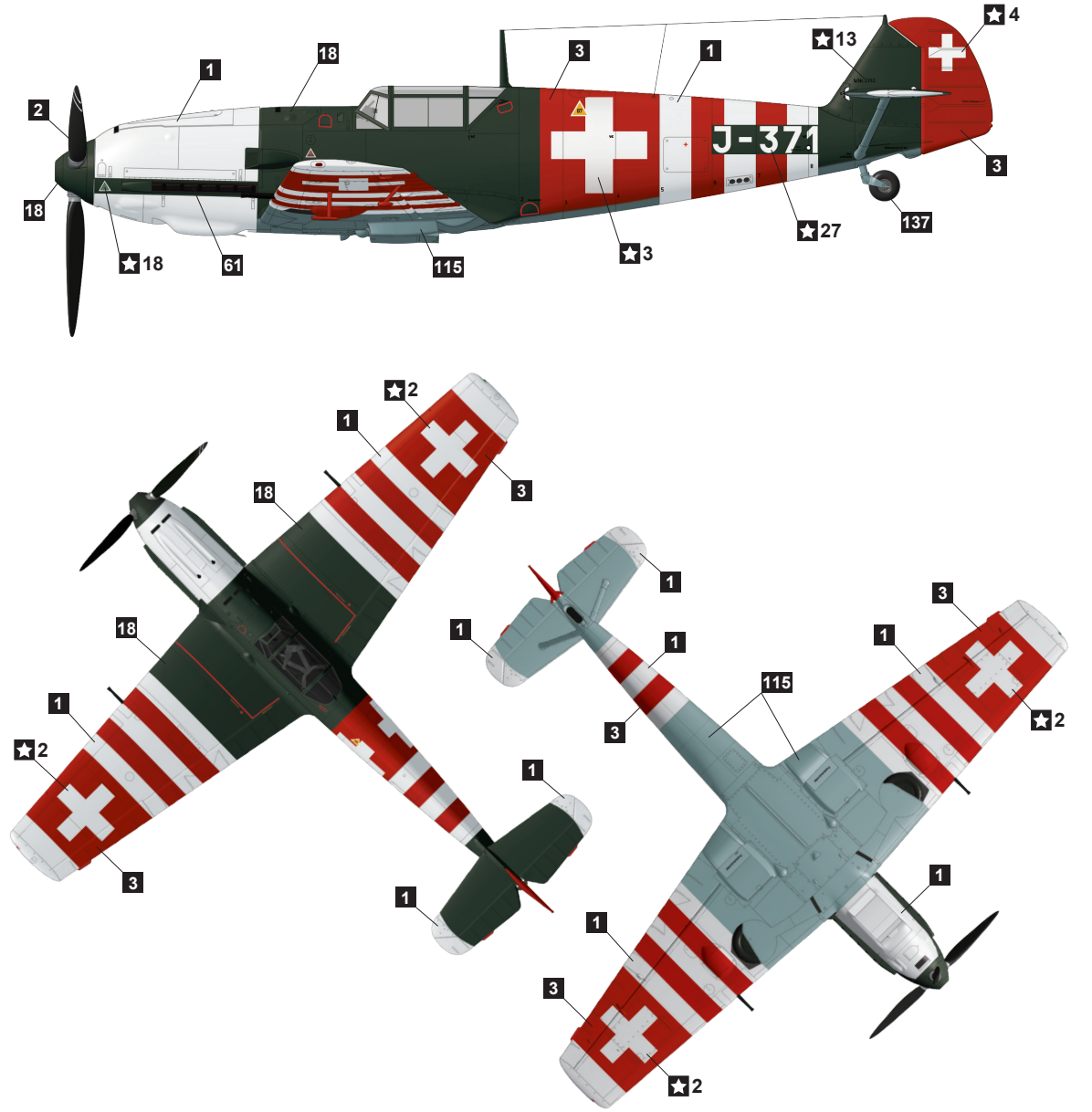
- Read carefully and fully understand the instructions before commencing assembly.
- Adult supervisor should also read instructions when assembled by children aged 14 or younger.
- Tear up and throw away the plastic bags containing kit parts as children may suffocate by swallowing or wearing over head.
- Cut the parts off properly and throw the waste parts into dustbin at once.
- Do not play with the parts for any other purpose as some parts may be too sharp. More caution and care needed for families with infants.
- Do not swallow any parts and cut-off chips. Keep away from reach of children.
- Wrong or careless usage of nipper, cutter, file etc. may hurt the assembler.
- Be cautious as follows when using adhesives and / or paints:
 - Do not use near fire to avoid flammability.
 - Do not put any adhesives and/or paints into mouth and eye. If mistakenly put into, wash out promptly with full water and consult a medic.
- Use toolings, adhesives, paints, batteries etc. properly after careful reading of instructions given in each handling manual.



1 Messerschmitt Bf 109 E-3a (W.Nr. 2159)
Switzerland, 1944.



2 Messerschmitt Bf 109 E-3a (W.Nr. 2352)
Switzerland, 1944.

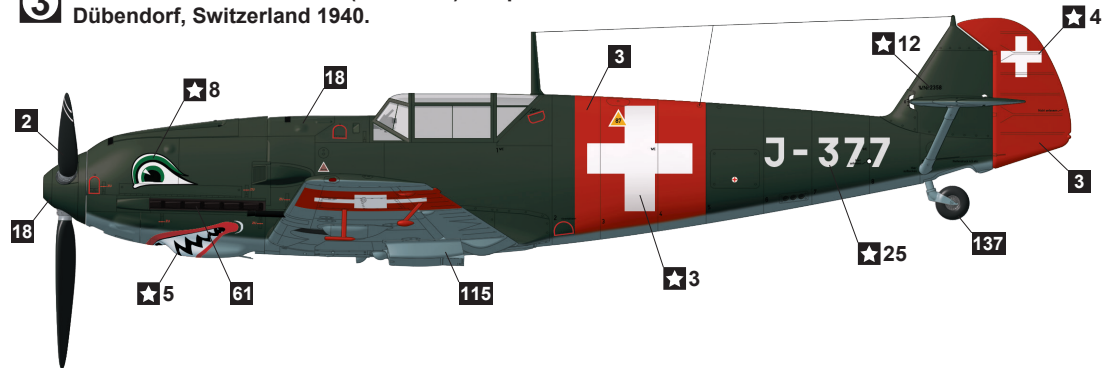


1	H 1	2	H 2	18	H 65	60	H 70	115	H 67	3	H 3	113	H 413	340	H 340	64	H 76
RLM 21 Weiß		RLM 22 Schwarz		RLM 70 Schwarzgrün		RLM 02 Grau		RLM 65 Hellblau		Rot		RLM 04 Gelb		RLM 62 Grün		Burnt Iron	

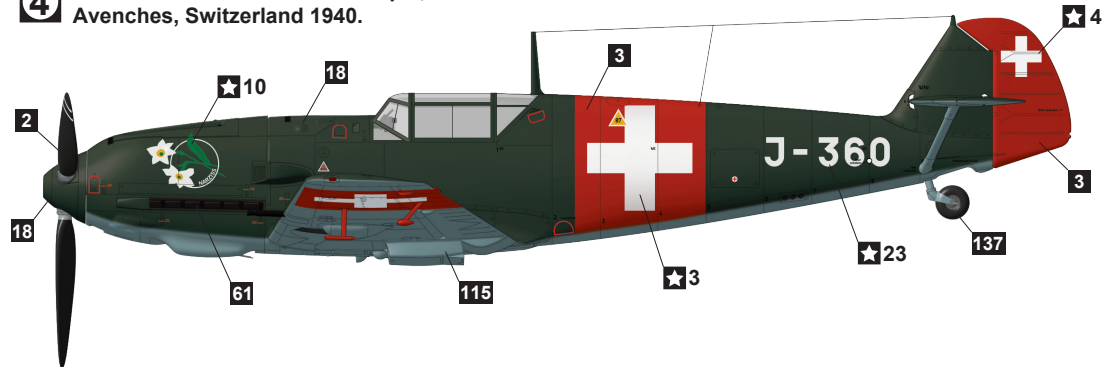
H [] in painting indication is the number of Gunze Sangyo Aqueous Hobby Color, while [] is that of Mr. Color. Glue and paints is not included in this kit.

© 2023 Wingsy Kits. Printed in Ukraine

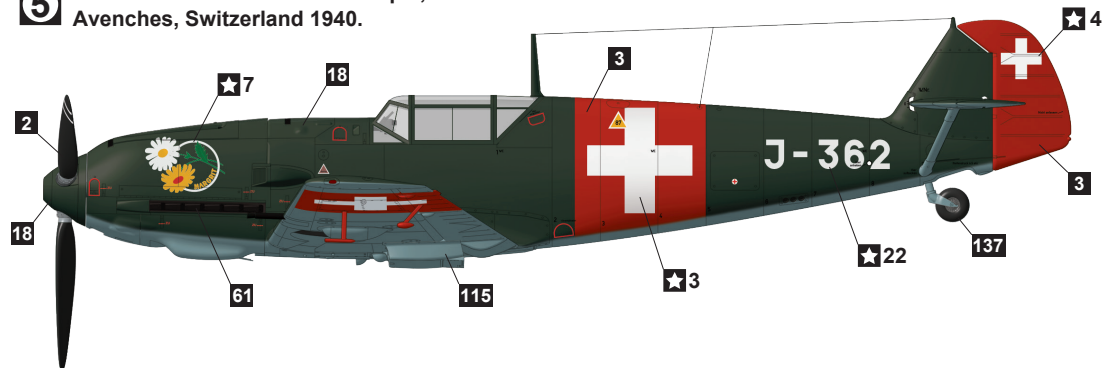
3 Messerschmitt Bf 109 E-3a (W.Nr.2358) Fl.Kp.21
Dübendorf, Switzerland 1940.



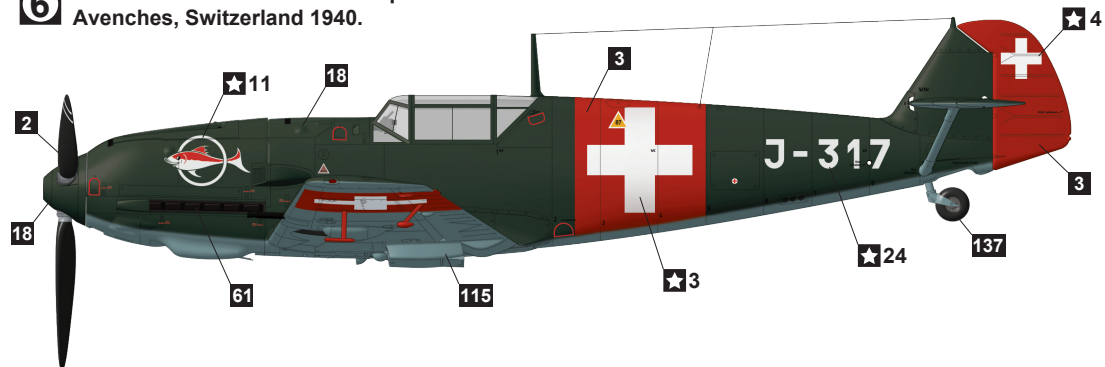
4 Messerschmitt Bf 109 E-3a Fl.Kp.8, Obl. Brenneisen
Avenches, Switzerland 1940.



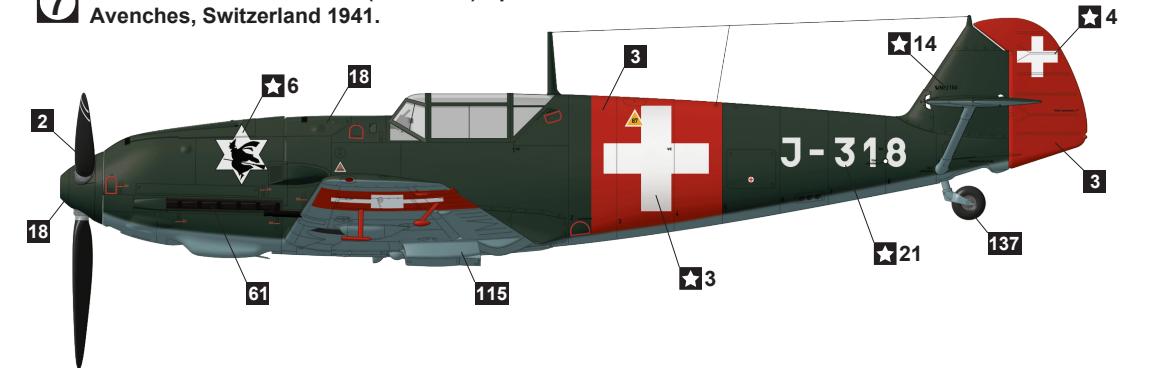
5 Messerschmitt Bf 109 E-3a Fl.Kp.8, Lt. Schär
Avenches, Switzerland 1940.



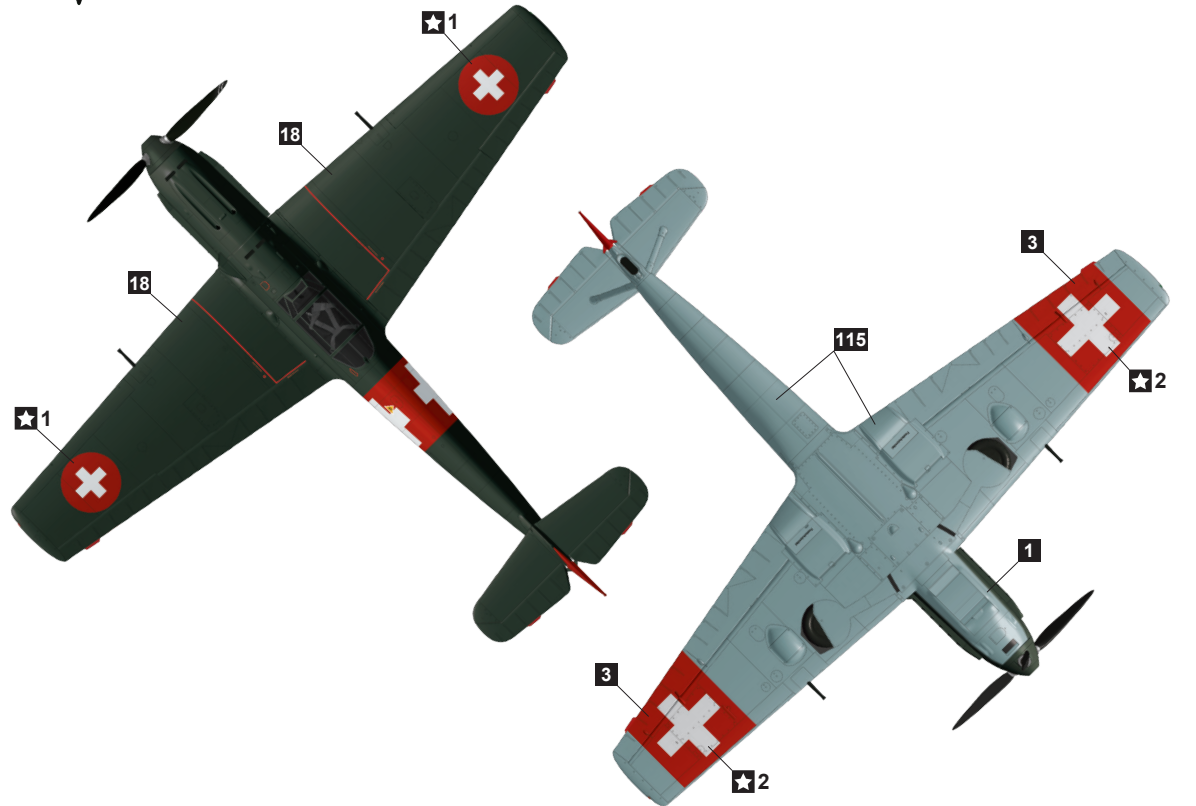
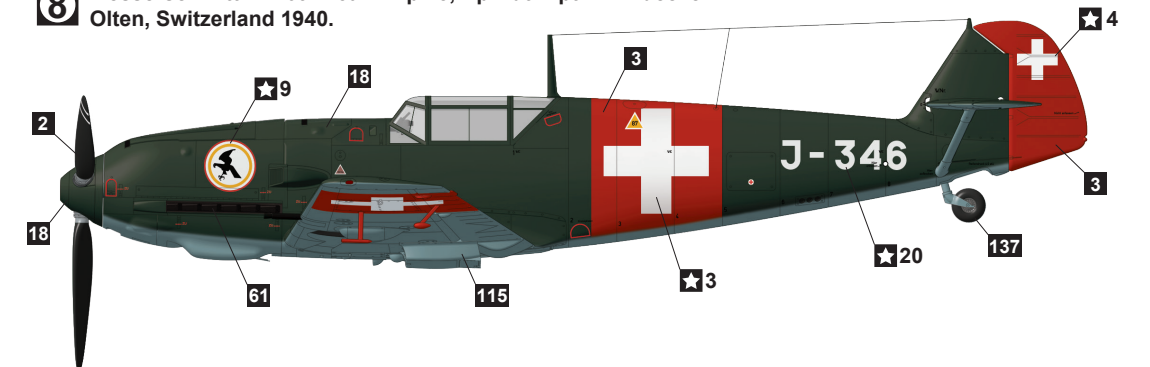
6 Messerschmitt Bf 109 E-3a Fl.Kp.7
Avenches, Switzerland 1940.



7 Messerschmitt Bf 109 E-3a (W.Nr.2166) Cp.av.6
Avenches, Switzerland 1941.



8 Messerschmitt Bf 109 E-3a Fl.Kp.15, Kp.Kdt. Hptm. Lindecker
Olten, Switzerland 1940.



H [] in painting indication is the number of Gunze Sangyo Aqueous Hobby Color, while [] is that of Mr. Color. Glue and paints is not included in this kit.

© 2023 Wingsy Kits. Printed in Ukraine